



May 19, 2021

TO: LOCSD Board of Directors

FROM: Margaret Falkner, Utility Systems Manager
Alicia Zuniga, Utility Billing Specialist

SUBJECT: **Agenda Item 5 – 05/19/2021 Utilities Advisory Committee**
Utilities Department Report for April 2021

President
Christine M. Womack

Vice President
Matthew D. Fourcroy

Directors
Charles L. Cesena
Troy C. Gatchell
Marshall E. Ochylski

General Manager
Ron Munds

District Accountant
Robert Stilts, CPA

Unit Chief
Scott M. Jalbert

Battalion Chief
Paul Provence

Mailing Address:
P.O. Box 6064
Los Osos, CA 93412

Offices:
2122 9th Street, Suite 110
Los Osos, CA 93402

Phone: 805/528-9370
FAX: 805/528-9377

www.losososcsd.org

WATER PRODUCTION INFORMATION

The total production for the month of **April 2021** was approximately **14.04 million gallons (MG)** this equates to an average daily demand of **467,900 gallons**. This represents an **8.26% increase** in production from last year.

Using the state's formula to calculate residential usage per capita per day, for the month of **April 2021** our residential customers used **62.5** gallons per person per day, an increase from 57.8 gallons per person per day in April 2020.

PRODUCTION AND RUNTIME HOURS BY WELL SITE

The following tables break down the production by well site and runtime on the pump motors for the month of **April 2021**. Totals for last year are included for comparison:

Production (MG) April	2021	2020
Palisades	1.8779	3.4925
3rd St	2.8099	0.0000
8th Street/El Moro	2.8742	4.1110
10th St	2.8996	3.5481
South Bay (lower)	3.4961	1.2487
South Bay (upper)	0.0780	0.5640
Total:	14.0357	12.9643

Runtime (Hours) April	2021	2020
Palisades	87.9	169.3
3rd St	676.0	0.2
8th Street/El Moro	157.6	226.1
10th St	227.6	226.2
South Bay (lower)	659.8	435.7
South Bay (upper)	34.3	334.4
Total:	1843.2	1391.9

WATER BILLING INFORMATION

FY '19-'20			FY '20-'21		
Month	Gallons	Revenue	Month	Gallons	Revenue
Jul	11,953,040	\$216,577.84	Jul	12,119,096	\$217,906.44
Aug	14,980,944	\$272,102.61	Aug	18,097,860	\$313,290.49
Sep	12,585,100	\$224,312.76	Sep	13,407,900	\$235,232.34
Oct	16,165,028	\$286,960.25	Oct	15,497,064	\$277,149.49
Nov	12,121,340	\$217,727.51	Nov	12,240,272	\$219,526.66
Dec	14,617,416	\$265,928.52	Dec	15,013,108	\$270,072.58
Jan	8,617,708	\$172,429.51	Jan	10,555,776	\$196,582.18
Feb	12,669,624	\$241,461.74	Feb	13,054,096	\$243,860.92
Mar	9,780,848	\$187,483.31	Mar	10,246,104	\$192,968.25
Apr	12,867,844	\$244,449.45	Apr	14,298,768	\$261,154.06
May	10,992,608	\$202,963.74	May		
Jun	16,105,188	\$286,586.98	Jun		

UTILITIES DEPARTMENT OPERATIONS AND MAINTENANCE

During the month of April 2021, the Utilities crew performed all required operations and maintenance tasks. The various tasks and facilities maintained are:

WATER DISTRIBUTION AND TREATMENT

- Daily, weekly, and monthly water quality sampling, analysis and reporting, for all well sites and throughout the distribution system.
- Monthly meter reading.
- Grounds keeping at well and drainage sites.
- CIP project tracking

DRAINAGE WDID # 3 40M2000133

The District continues to operate and comply with the General National Pollutant Discharge Elimination System (NPDES) Permit for storm water discharges for small Municipal Separate Storm Sewer Systems (MS4).

Storm water pollution prevention measures are available on the District’s Drainage web page:

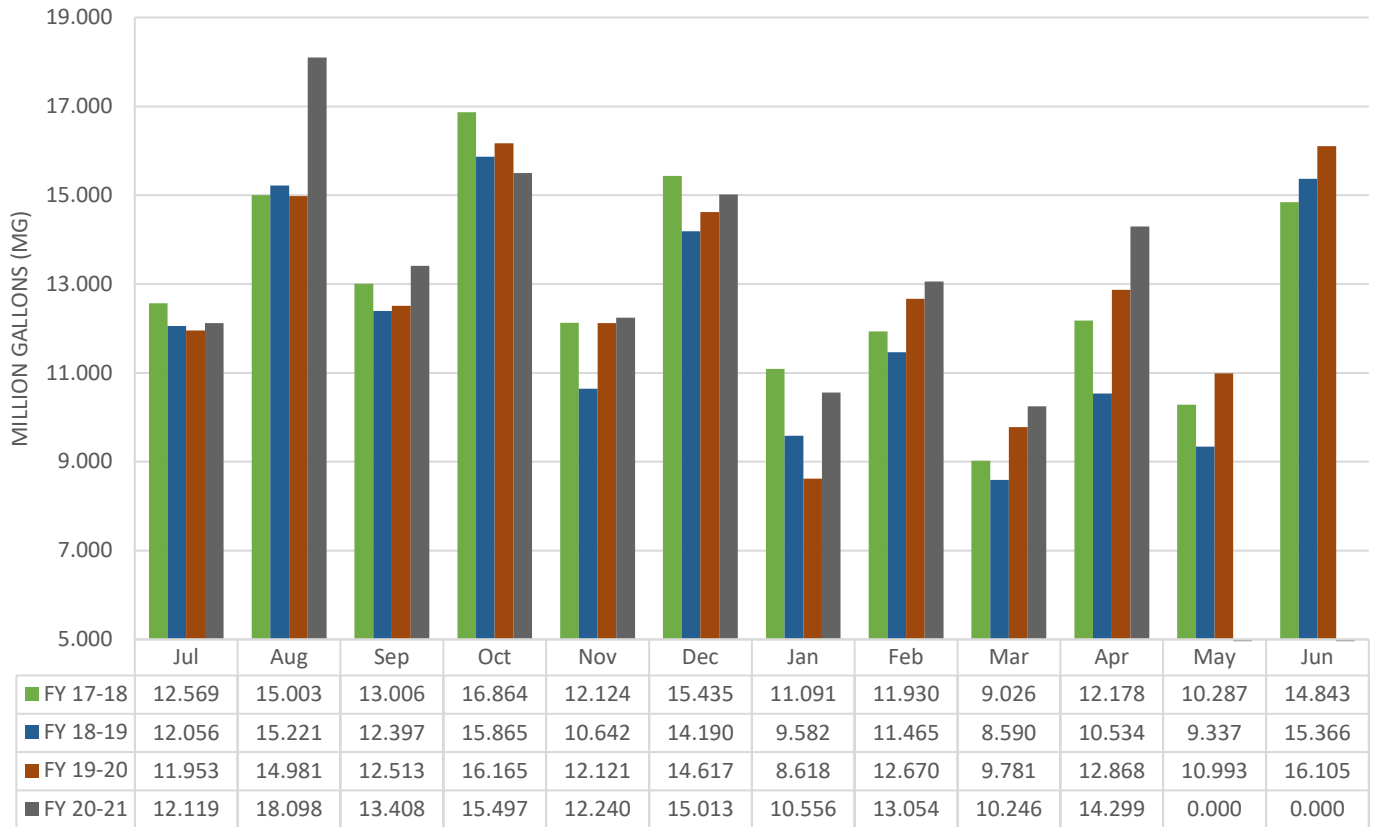
<http://www.losososcsd.org/drainage>

RAINFALL TOTALS

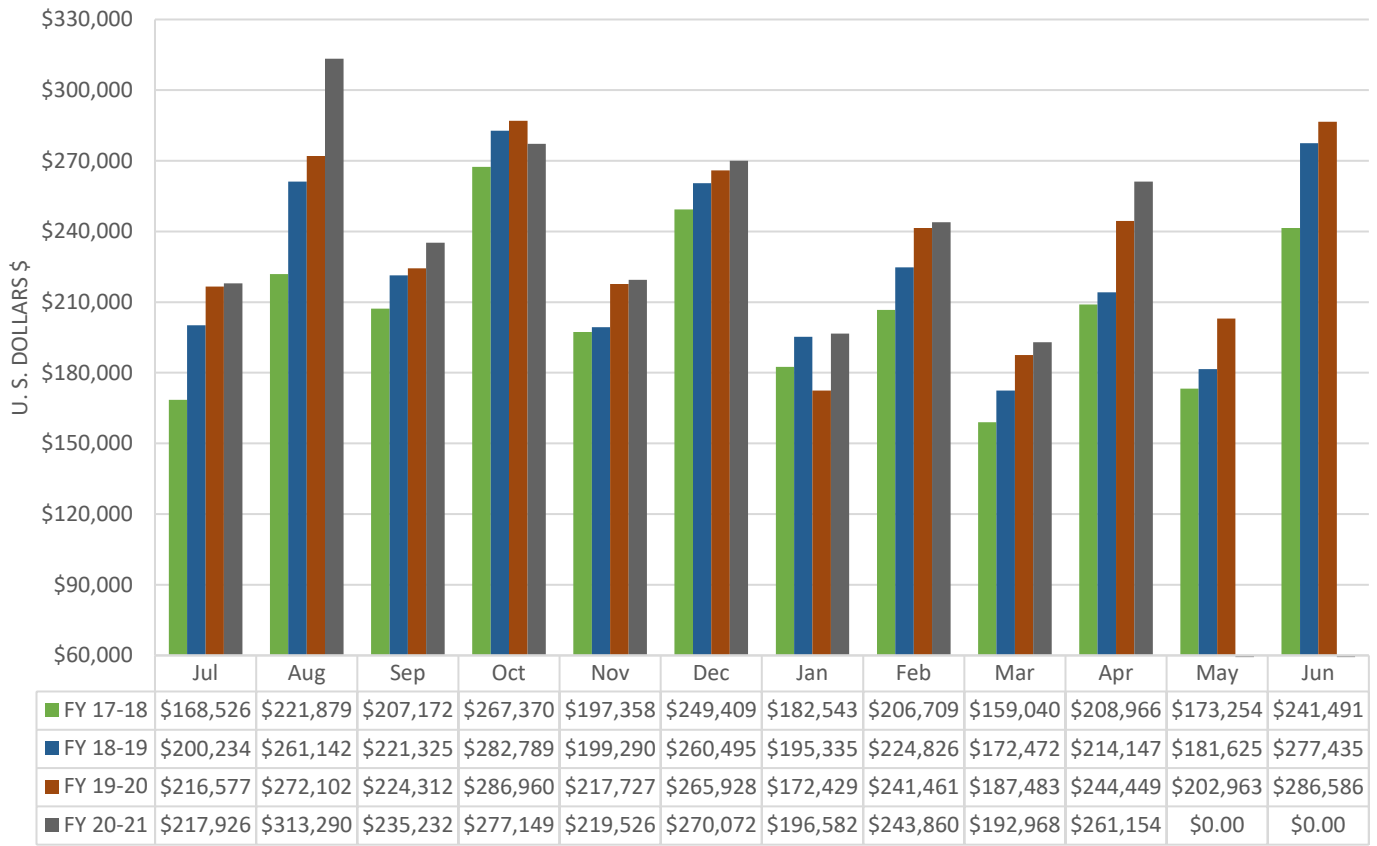
The County has a link to rain and reservoir information: <http://wr.slocountywater.org/home.php> below is a table of historical rainfall totals from the Los Osos Landfill rain monitor. This has been arranged to coincide with our Water Shortage Contingency Plan Climate Trigger which is based on rainfall measured from April 1st through March 31st.

Station Name and Number		Los Osos Landfill # 727											
*** All units are in inches ***													
Water Year	APR	MAY	JUN	JUL	AUG	SEP	OCT	NOV	DEC	JAN	FEB	MAR	Total
2021-2022	0.00												0.00
2020-2021	1.89	0.12	0.04	0.00	0.04	0.00	0.00	0.00	0.04	9.93	0.20	1.26	13.52
2019-2020	0.08	1.53	0.00	0.00	0.08	0.00	0.00	2.13	4.37	0.20	0.04	4.80	13.23
2018-2019	0.79	0.00	0.00	0.00	0.00	0.00	0.43	3.75	1.14	6.14	6.90	3.94	23.09
2017 - 2018	0.55	0.27	0.00	0.00	0.00	0.16	0.16	0.47	0.12	3.78	0.16	7.95	13.62

HISTORICAL TO PRESENT LOCS D WATER CONSUMPTION BASED ON BILLING



HISTORICAL TO PRESENT LOCS D WATER REVENUE BASED ON BILLING



HISTORICAL TO PRESENT LOCS D WELL PRODUCTION DATA

