



February 17, 2021

TO: LOCSD Utilities Advisory Committee

FROM: Margaret Falkner, Utility Systems Manager
Alicia Zuniga, Utility Billing Specialist

**SUBJECT: Agenda Item 6- 02/17/2021 UAC Meeting
Utilities Department Report for January 2021**

President
Christine M. Womack

Vice President
Matthew D. Fourcroy

Directors
Charles L. Cesena
Troy C. Gatchell
Marshall E. Ochylski

General Manager
Ron Munds

District Accountant
Robert Stilts, CPA

Unit Chief
Scott M. Jalbert

Battalion Chief
Paul Provence

Mailing Address:
P.O. Box 6064
Los Osos, CA 93412

Offices:
2122 9th Street, Suite 110
Los Osos, CA 93402

Phone: 805/528-9370
FAX: 805/528-9377

www.losososcsd.org

WATER PRODUCTION INFORMATION

The total production for the month of **January 2021** was approximately **11.9 million gallons (MG)** this equates to an average daily demand of **399,600 gallons**. This represents approximately a **4.3% increase** in production from last year.

Using the state's formula to calculate residential usage per capita per day, for the month of **January 2021** our residential customers used **51.7** gallons per person per day, an increase from 49.5 gallons per person per day in January 2020.

PRODUCTION AND RUNTIME HOURS BY WELL SITE

The following tables break down the production by well site and runtime on the pump motors for the month of **January 2021**. Totals for last year are included for comparison:

Production (MG) January	2021	2020
Palisades	1.8285	2.4916
3rd St	2.8199	0.0000
8th Street/El Moro	2.6219	3.9361
10th St	0.0792	3.0577
South Bay (lower)	4.2114	1.4910
South Bay (upper)	0.4270	0.5176
Total:	11.9879	11.4940

Runtime (Hours) January	2021	2020
Palisades	88.0	119.0
3rd St	675.8	0.1
8th Street/El Moro	172.1	206.8
10th St	35.4	193.2
South Bay (lower)	737.8	500.1
South Bay (upper)	192.0	306.4
Total:	1901.1	1325.6

WATER BILLING INFORMATION

FY '19-'20			FY '20-'21		
Month	Gallons	Revenue	Month	Gallons	Revenue
Jul	11,953,040	\$216,577.84	Jul	12,119,096	\$217,906.44
Aug	14,980,944	\$272,102.61	Aug	18,097,860	\$313,290.49
Sep	12,585,100	\$224,312.76	Sep	13,407,900	\$235,232.34
Oct	16,165,028	\$286,960.25	Oct	15,497,064	\$277,149.49
Nov	12,121,340	\$217,727.51	Nov	12,240,272	\$219,526.66
Dec	14,617,416	\$265,928.52	Dec	15,013,108	\$270,072.58
Jan	8,617,708	\$172,429.51	Jan	10,555,776	\$196,582.18
Feb	12,669,624	\$241,461.74	Feb		
Mar	9,780,848	\$187,483.31	Mar		
Apr	12,867,844	\$244,449.45	Apr		
May	10,992,608	\$202,963.74	May		
Jun	16,105,188	\$286,586.98	Jun		

UTILITIES DEPARTMENT OPERATIONS AND MAINTENANCE

During the month of January 2021, the Utilities crew performed all required operations and maintenance tasks. The various tasks and facilities maintained are:

WATER DISTRIBUTION AND TREATMENT

- Daily, weekly, and monthly water quality sampling, analysis and reporting, for all well sites and throughout the distribution system.
- Monthly meter reading.
- Grounds keeping at well and drainage sites.
- CIP project tracking
- 10th Street Well rehabilitation coordination and support

DRAINAGE WDWID # 3 40M2000133

The District continues to operate and comply with the General National Pollutant Discharge Elimination System (NPDES) Permit for storm water discharges for small Municipal Separate Storm Sewer Systems (MS4).

Storm water pollution prevention measures are available on the District's Drainage web page:

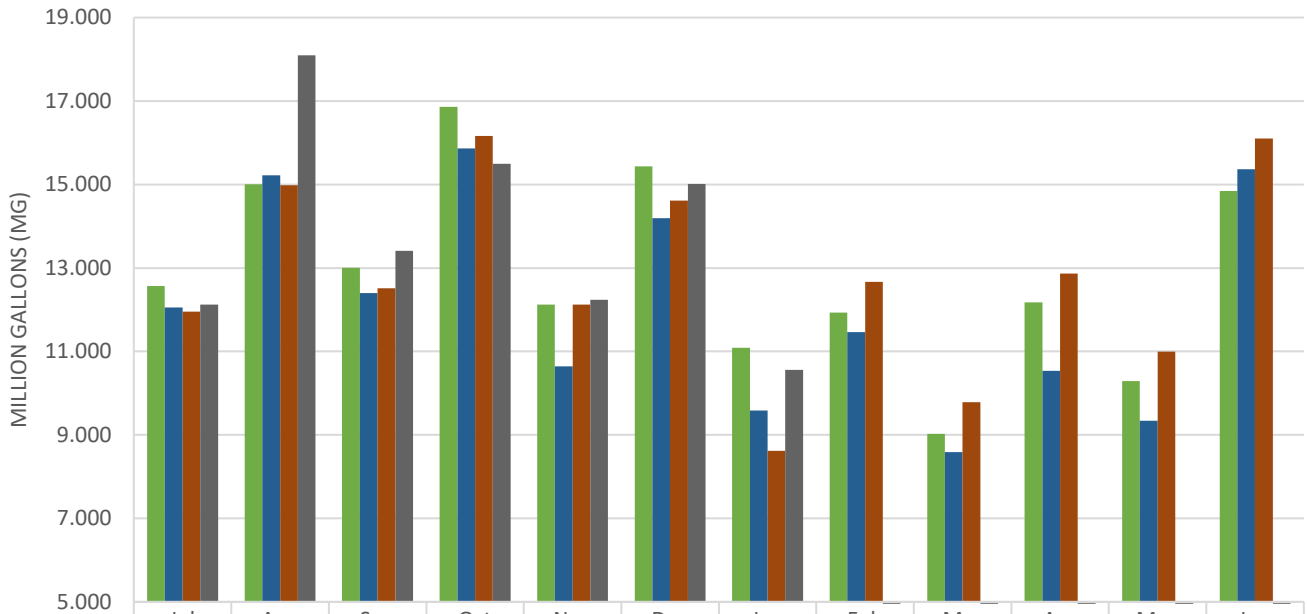
<http://www.losososcsd.org/drainage>

RAINFALL TOTALS

The County has a link to rain and reservoir information: <http://wr.slocountywater.org/home.php> below is a table of historical rainfall totals from the Los Osos Landfill rain monitor. This has been arranged to coincide with our Water Shortage Contingency Plan Climate Trigger which is based on rainfall measured from April 1st through March 31st.

Station Name and Number	Los Osos Landfill # 727													
	*** All units are in inches ***													
Water Year	APR	MAY	JUN	JUL	AUG	SEP	OCT	NOV	DEC	JAN	FEB	MAR	Total	
2020-2021	1.89	0.12	0.04	0.00	0.04	0.00	0.00	0.00	0.04	9.93			12.06	
2019-2020	0.08	1.53	0.00	0.00	0.08	0.00	0.00	2.13	4.37	0.20	0.04	4.80	13.23	
2018-2019	0.79	0.00	0.00	0.00	0.00	0.00	0.43	3.75	1.14	6.14	6.90	3.94	23.09	
2017 - 2018	0.55	0.27	0.00	0.00	0.00	0.16	0.16	0.47	0.12	3.78	0.16	7.95	13.62	
2016 - 2017	0.20	0.00	0.00	0.00	0.00	0.00	1.65	2.76	3.39	9.02	7.65	1.34	26.01	

HISTORICAL TO PRESENT LOCS D WATER CONSUMPTION BASED ON BILLING



	Jul	Aug	Sep	Oct	Nov	Dec	Jan	Feb	Mar	Apr	May	Jun
FY 17-18	12.569	15.003	13.006	16.864	12.124	15.435	11.091	11.930	9.026	12.178	10.287	14.843
FY 18-19	12.056	15.221	12.397	15.865	10.642	14.190	9.582	11.465	8.590	10.534	9.337	15.366
FY 19-20	11.953	14.981	12.513	16.165	12.121	14.617	8.618	12.670	9.781	12.868	10.993	16.105
FY 20-21	12.119	18.098	13.408	15.497	12.240	15.013	10.556	0.000	0.000	0.000	0.000	0.000

HISTORICAL TO PRESENT LOCS D WATER REVENUE BASED ON BILLING



HISTORICAL TO PRESENT LOCS D WELL PRODUCTION DATA

