



May 29, 2014

TO: LOCSD Board of Directors
FROM: Margaret Falkner, Utility Compliance Technician III
SUBJECT: **Agenda Item 9B – 06/05/2014 Board Meeting**
Utilities Department Report for April 2014

President
Craig V. Baltimore

Vice President
R. Michael Wright

Directors
Leonard A. Moothart
Marshall E. Ochylski

General Manager
Kathy Kivley

Interim District Accountant
Dale Flynn

Fire Chief
Robert Lewin

Battalion Chief
Phill Veneris

Mailing Address:
P.O. Box 6064
Los Osos, CA 93412

Offices:
2122 9th Street, Suite 102
Los Osos, CA 93402

Phone: 805/528-9370
FAX: 805/528-9377

www.locsd.org

WATER PRODUCTION

The total production for the month of **April 2014** was approximately **16.4 million gallons (MG)** this equates to an average daily demand of 545,100 gallons. This represents a **decrease** in production from last year by approximately **23%**.

Forty-three percent of the service area received bills for approximately **14.1 MG** consumption for the period **March 10, 2014 through May 13, 2014**. This generated **\$128,784.61** in revenue. This represents approximately **15%** decrease in consumption and approximately **4%** decrease in revenue when compared to last year at this time.

PRODUCTION AND RUNTIME HOURS BY WELL SITE

Below are two tables that break down the production by well site and the runtime on the pump motor for the month of April 2014. Last year's totals are included for comparison:

Production (MG) April	2014	2013
Palisades	4.9100	0.6570
3rd Street	3.0607	3.0595
El Moro	3.7215	7.9930
10th Street	3.5571	7.2941
South Bay (lower)	1.1049	2.1139
South Bay (upper)	0.0000	0.0000
TOTAL:	16.3542	21.1175

Runtime (Hours) April	2014	2013
Palisades	141.6	18.6
3rd St	695.6	711.3
El Moro	175.2	379.6
10th St	190.1	389.5
South Bay (lower)	712.9	711.7
South Bay (upper)	0.0	0.0
TOTAL:	1915.4	2210.7

Please refer to the attached April 2014 "Well Log Summary" for more data regarding production, runtime hours, chemical usage, soundings, and alarms.

CALIFORNIA STATE OF EMERGENCY DUE TO DROUGHT

On January 17, 2014, Governor Brown declared an emergency due to drought. He has called on all Californians to restrain water use. Attached to this report are graphs with tables which provide information on the District's water well depths.

WATER CONSERVATION

Staff attended two public events providing low flow household water fixtures and water conservation literature. The first event was The Los Osos/Baywood Park Chamber of Commerce Business Exposition held at the Community Center on Friday May 16th. The second event was at the Baywood Park Farmer's Market on Santa Maria Avenue on May 19th. Both events were well attended. The most popular water conservation fixture handed out is the low flow garden hose nozzle. Over the course of these two events we gave out almost 100 of these garden nozzles to members of the public. The new tablecloth with the large LOCSD logo imprinted on it arrived in time for both events. The tablecloth provides a much more professional appearance. Weekly water conservation messages continue to be placed on the Rotary electronic message board at the corner of South Bay Blvd. and L.O.V.R. At the May 14, 2014 Utilities Advisory Committee (UAC) meeting a draft of the Outdoor Water Conservation Plan was distributed for comments by committee members and will return to the UAC meeting on June 11, 2014.

UTILITIES DEPARTMENT OPERATIONS AND MAINTENANCE FOR WATER SYSTEM

During the month of April 2014, crew provided weekly water sampling for water permit compliance, read water meters for billing, and performed monthly well soundings. In addition to these duties, they upgraded several service lines, re-routed a few service lines to provide separation from wastewater lines, and worked on the valve maintenance program.

Staff submitted the monthly monitoring report to the California Department of Public Health (CDPH) for April 2014 with no violations noted. The Consumer Confidence Report for water quality testing during the 2013 calendar year has been printed and distributed. This report is required to get to the consumer no later than July 1st every year. We are early getting this document completed this year. A copy of the report is available on our website on the main page and on the Utilities water quality page at: <http://www.losososcsd.org/cm/utilities/water-quality.html>

DRAINAGE WDID # 3 40M2000133

Crews checked drainage facilities after rain events in April. Crews recorded 1.03" of rain for the month of April at the District operations facility at 8th & El Moro. This brings the yearly total to 5.98". The General National Pollutant Discharge Elimination System (NPDES) Permit for storm water discharges for small Municipal Separate Storm Sewer Systems (MS4) is effective July 1, 2013. District staff has been working with staff at the Regional Water Quality Control Board on the current permit.

BAYRIDGE ESTATES WDID# 3 401027001

Crews continue monitoring and groundskeeping. Once connected to the Los Osos Wastewater Project, the District crews will no longer maintain the septic system.

VISTA DE ORO WDID# 3 401024001

Crews continue monitoring and groundskeeping. Once connected to the Los Osos Wastewater Project, the District crews will no longer maintain the septic system.

RECOMMENDATION

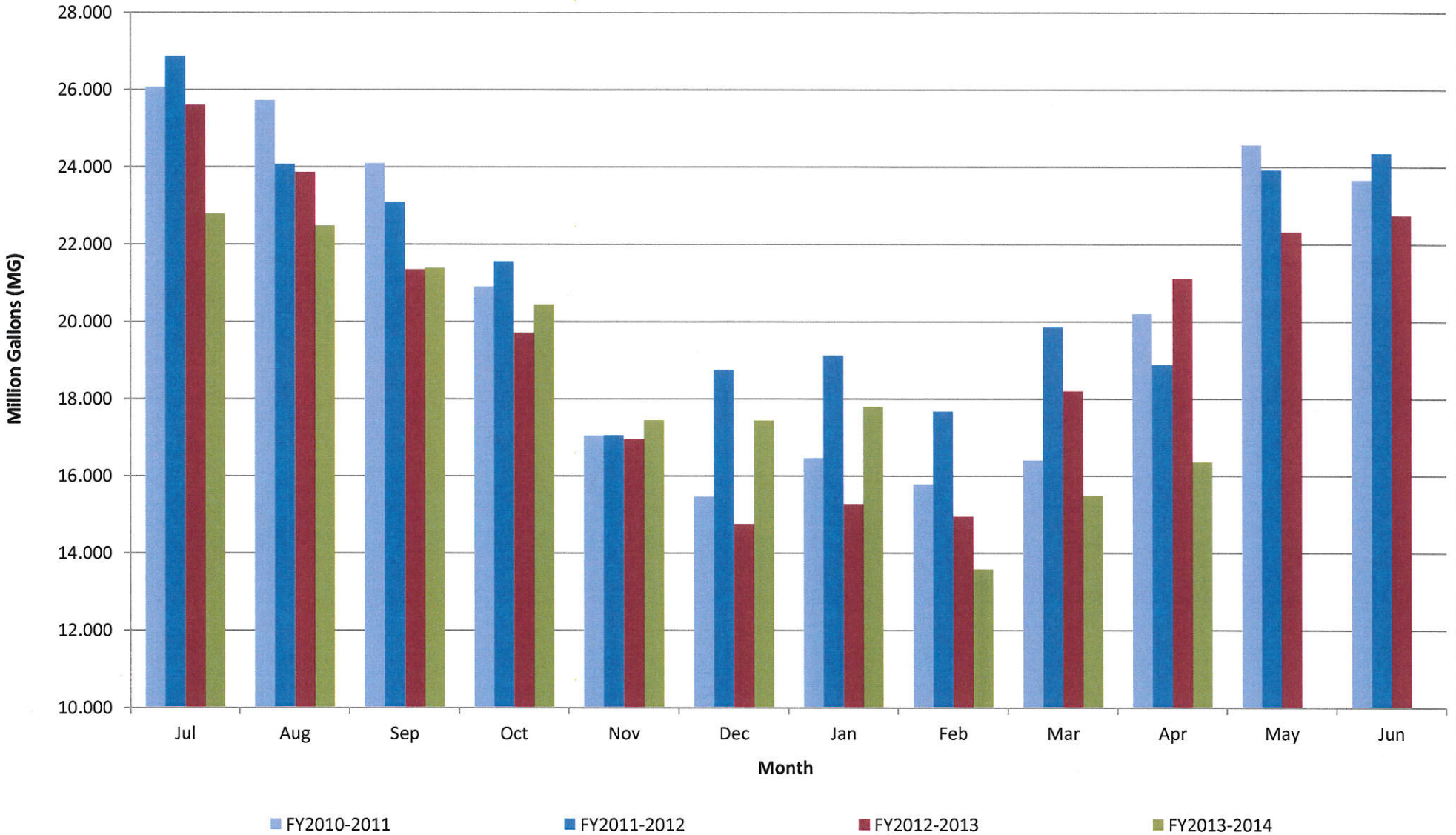
Staff encourages the Board to ask any questions they may have with regard to the aforementioned report or any other related item that may be listed separately as an agenda item.

Attachments

APRIL 2014	8th St./ El Moro Well	3rd St./ Bayside Well	10th St. Well	South Bay Well	South Bay Upper Well	Palisades Well	All Wells TOTAL	Last Years TOTAL	Percent% Differential
Total Gallons Produced, Mgal	3.7215	3.0607	3.5571	1.1049	0.0000	4.9100	16.3542	21.1175	-22.56%
Average Daily Flow, Mgal							0.5451		
Total Gallons to Waste (Filter Backwash), Mgal	0.0000			0.0000	0.0000		0.0000	0	
Total Gallons to Waste (System Flushing), Mgal							0.0000	0	
Distribution System Losses (Water Line Breaks), Mgal							0.0020	0.01	
Total Gallons Adjusted, Mgal	3.7215			1.1049			16.3522	21.1075	-22.53%
Pump Runtime, total hours	175.2	695.6	190.1	712.9		141.6	1915.4	2210.7	-15.42%
Daily Avg. Runtime, hours/day	5.8	23.2	6.3	23.8		4.7			
Energy Used, kWatts	7035	5540	8735	7486		11180	39976	44666	-10.50%
Eff. Ratio, kWatts/hr	40.15	7.96	45.95	10.50		78.95			
Chlorine Used, total gallons	47.2	35.2	22.5	25.4		41.6	130.3	192	-32.13%
Aqua Mag, pounds	51.4		42.8	0.0		33.8	128.0	414.8	-69.14%
Static water level, ft.	35.10	7.10	156.80	112.90	0.00	102.10			
Pump water level, ft.	146.00	53.80	247.10	156.10	0.00	259.60			
Draw-down level, ft.	110.90	46.70	90.30	43.20	0.00	157.50	South Bay	Upper Well	Out of Service
Gallons per minute	357	72	318	45	0	577			
Pressure, psi	93	82	34	60	0	88			
Alarm Events									
YES / NO	NO	NO	NO	NO	NO	NO			
Type of event									
Well Failure							0		
Power Failure							0		
Low Chlorine							0		
Other:							0		
Total number alarms	0	0	0	0	0	0	0	3	-100.00%

Well Log Summaries

Historical to Present LOCS D Well Production Data



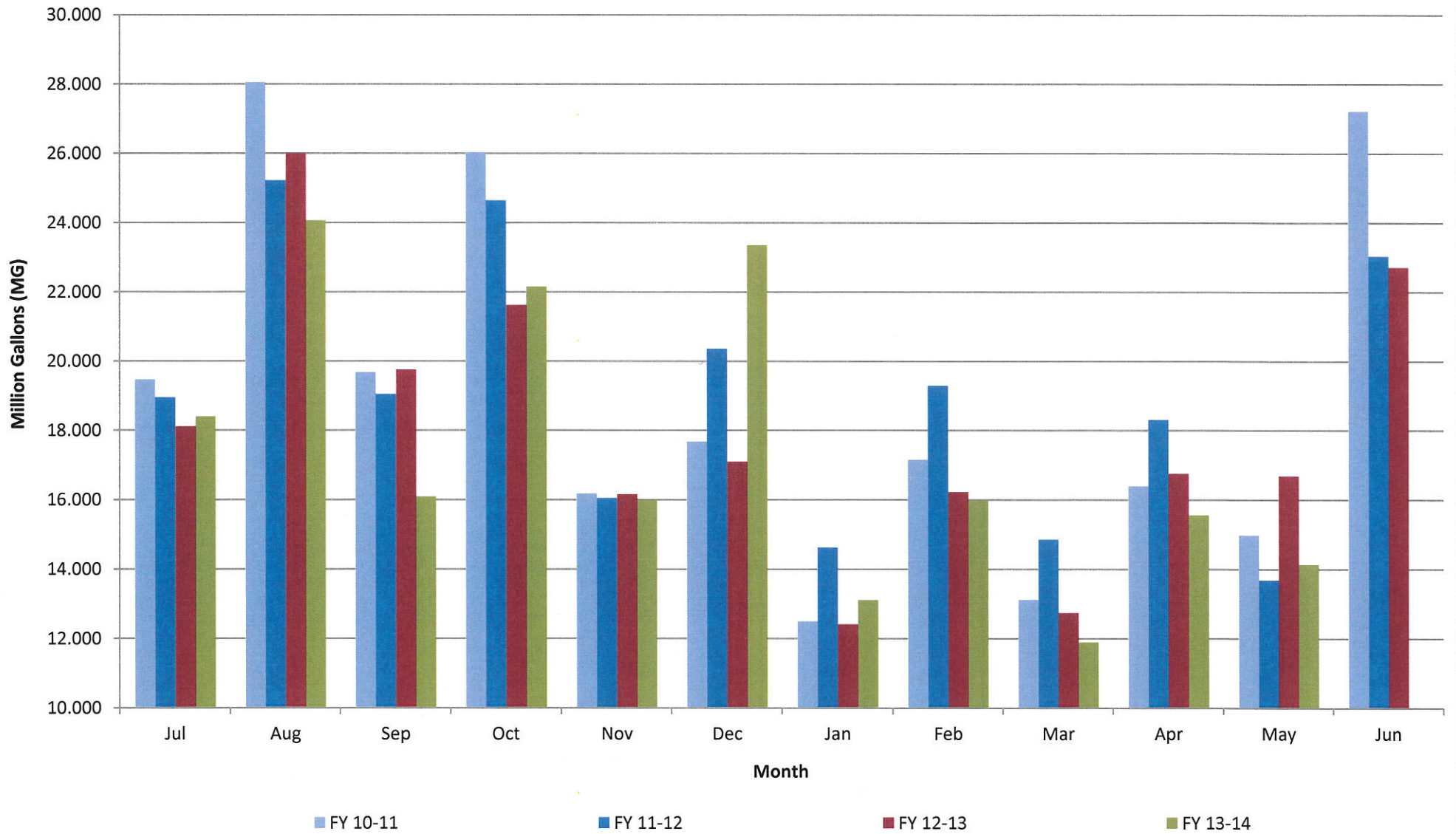
LOCSD Water Data

Water Production Data in Million Gallons

	FY 10-11	FY 11-12	FY 12-13	FY 13-14
Jul	26.066	26.868	25.600	22.779
Aug	25.724	24.064	23.862	22.470
Sep	24.087	23.086	21.340	21.380
Oct	20.895	21.543	19.708	20.431
Nov	17.042	17.046	16.939	17.436
Dec	15.460	18.745	14.747	17.431
Jan	16.463	19.117	15.268	17.780
Feb	15.783	17.662	14.940	13.584
Mar	16.402	19.843	18.193	15.476
Apr	20.195	18.873	21.118	16.354
May	24.563	23.914	22.310	
Jun	23.660	24.347	22.743	
TOTAL	246.338	255.107	236.767	185.121

Consumption is billed for a two month period every month.
Revenue is based on gallons billed - not cash received.
Production is recorded daily.

Historical to Present LOCSD Water Consumption

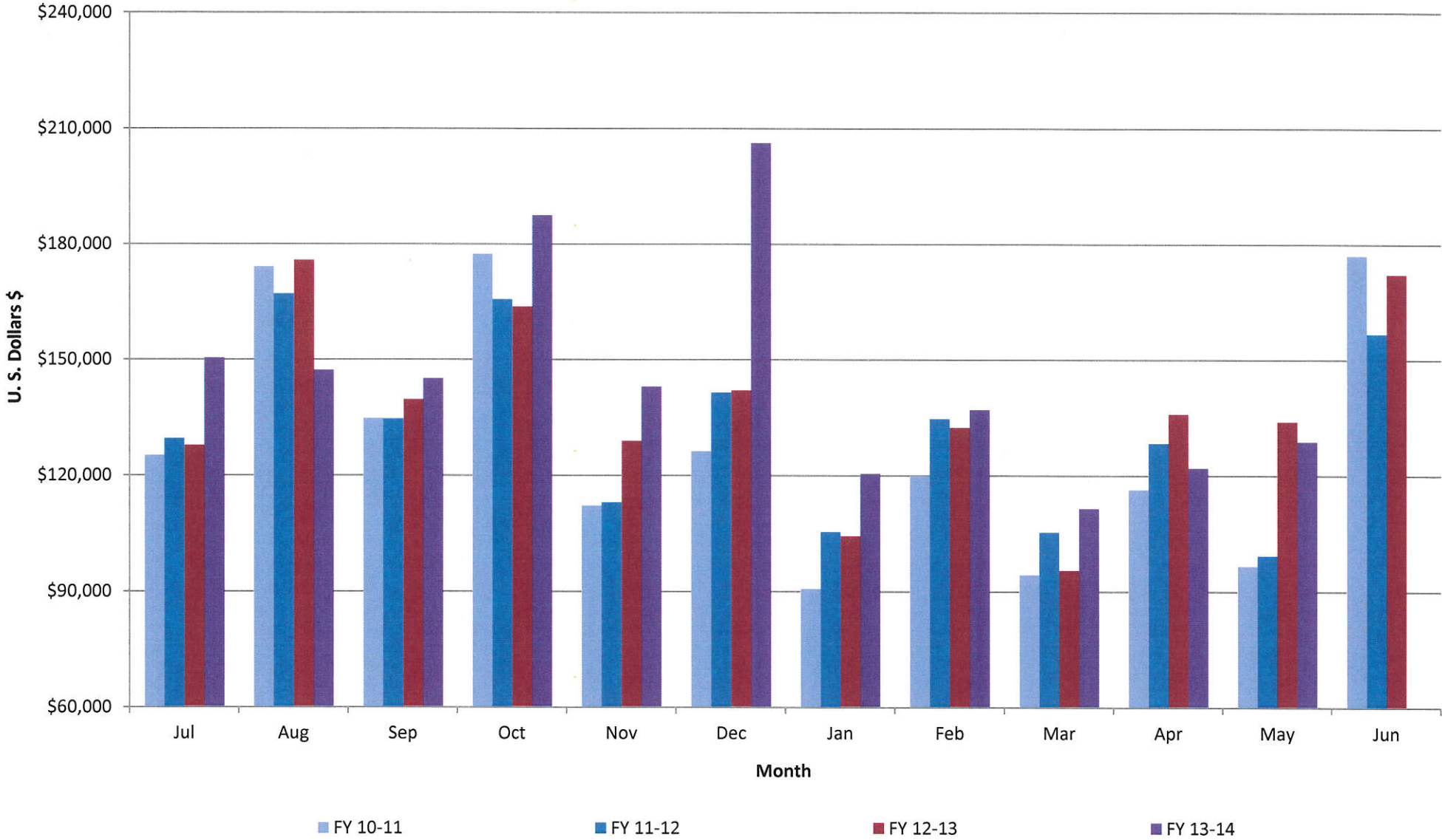


LOCSD Water Data

Water Consumption Data in Million Gallons						
% of Service Area	Billing Period		FY 10-11	FY 11-12	FY 12-13	FY 13-14
43	5/11 to 7/10	Jul	19.463	18.950	18.110	18.402
57	6/11 to 8/10	Aug	28.050	25.210	26.006	24.061
43	7/11 to 9/10	Sep	19.674	19.044	19.748	16.087
57	8/11 to 10/10	Oct	26.027	24.636	21.617	22.142
43	9/11 to 11/10	Nov	16.179	16.048	16.155	15.994
57	10/11 to 12/10	Dec	17.683	20.355	17.096	23.342
43	11/11 to 1/10	Jan	12.485	14.623	12.406	13.105
57	12/11 to 2/10	Feb	17.161	19.294	16.223	15.969
43	1/11 to 3/10	Mar	13.109	14.858	12.737	11.886
57	2/11 to 4/10	Apr	16.396	18.313	16.756	15.559
43	3/11 to 5/10	May	14.975	13.685	16.686	14.131
57	4/11 to 6/10	Jun	27.212	23.029	22.709	
		TOTAL	228.414	228.044	216.249	190.678

Consumption is billed for a two month period every month.
 Revenue is based on gallons billed - not cash received.
 Production is recorded daily.

Historical to Present LOCS D Water Revenue



LOCSD Water Data

Water Revenue Data						
% of Service Area	Billing Period		FY 10-11	FY 11-12	FY 12-13	FY 13-14
43	5/11 to 7/10	Jul	\$125,133.24	\$129,524.46	\$127,737.70	\$150,401.90
57	6/11 to 8/10	Aug	\$174,057.07	\$167,062.07	\$175,798.70	\$147,246.54
43	7/11 to 9/10	Sep	\$134,756.85	\$134,650.62	\$139,628.43	\$145,135.28
57	8/11 to 10/10	Oct	\$177,362.45	\$165,624.63	\$163,698.98	\$187,431.78
43	9/11 to 11/10	Nov	\$112,171.55	\$113,044.46	\$128,918.55	\$143,029.03
57	10/11 to 12/10	Dec	\$126,236.55	\$141,492.06	\$142,026.32	\$206,187.91
43	11/11 to 1/10	Jan	\$90,676.15	\$105,371.44	\$104,328.08	\$120,500.40
57	12/11 to 2/10	Feb	\$119,946.90	\$134,692.14	\$132,433.64	\$137,045.65
43	1/11 to 3/10	Mar	\$94,298.10	\$105,313.67	\$95,487.96	\$111,475.31
57	2/11 to 4/10	Apr	\$116,335.40	\$128,368.97	\$135,947.81	\$121,943.68
43	3/11 to 5/10	May	\$96,549.67	\$99,287.66	\$133,939.00	\$128,784.61
57	4/11 to 6/10	Jun	\$177,009.32	\$156,744.35	\$172,139.37	
		TOTAL	\$1,544,533.25	\$1,581,176.53	\$1,652,084.54	\$1,599,182.09

Consumption is billed for a two month period every month.
 Revenue is based on gallons billed - not cash received.
 Production is recorded daily.

