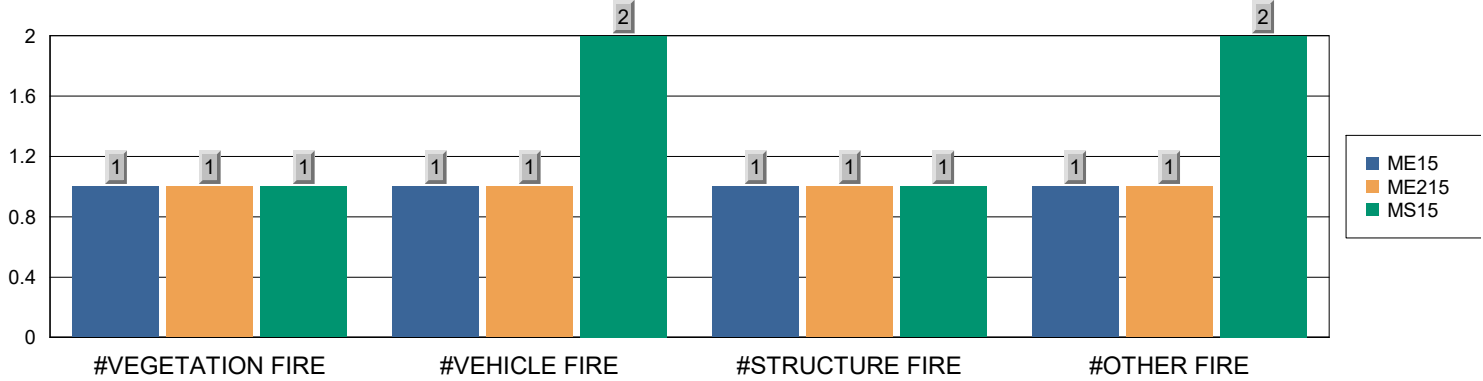




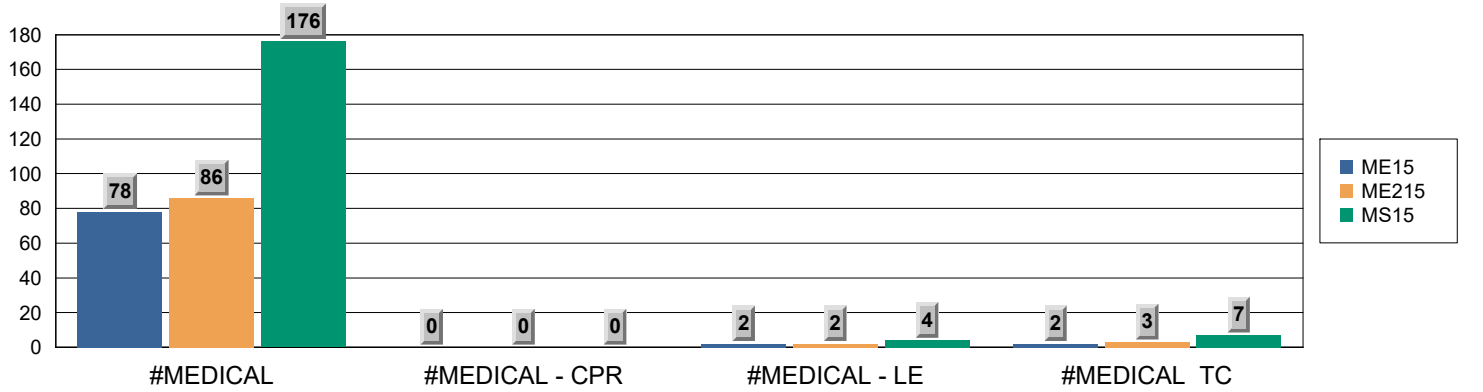
Station 15 Monthly Incident Summary

March 2026

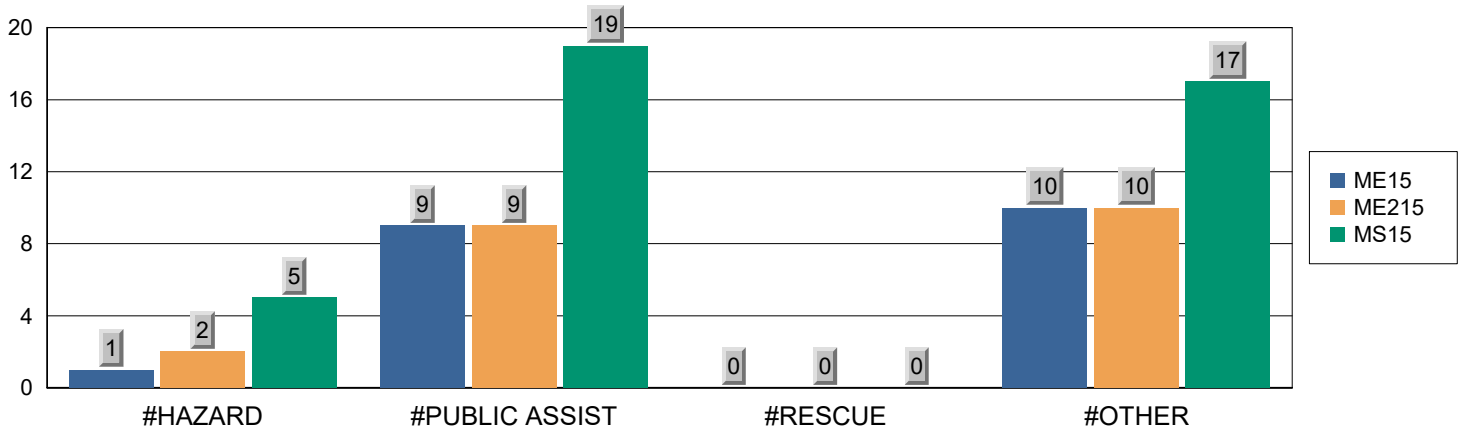
Fire Responses by Type



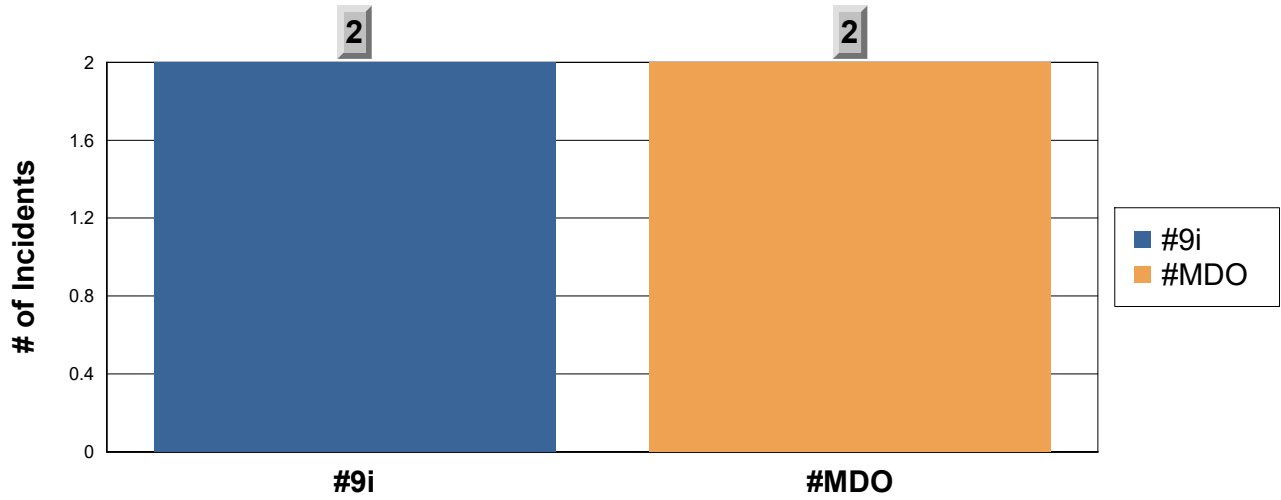
Medical Responses by Type



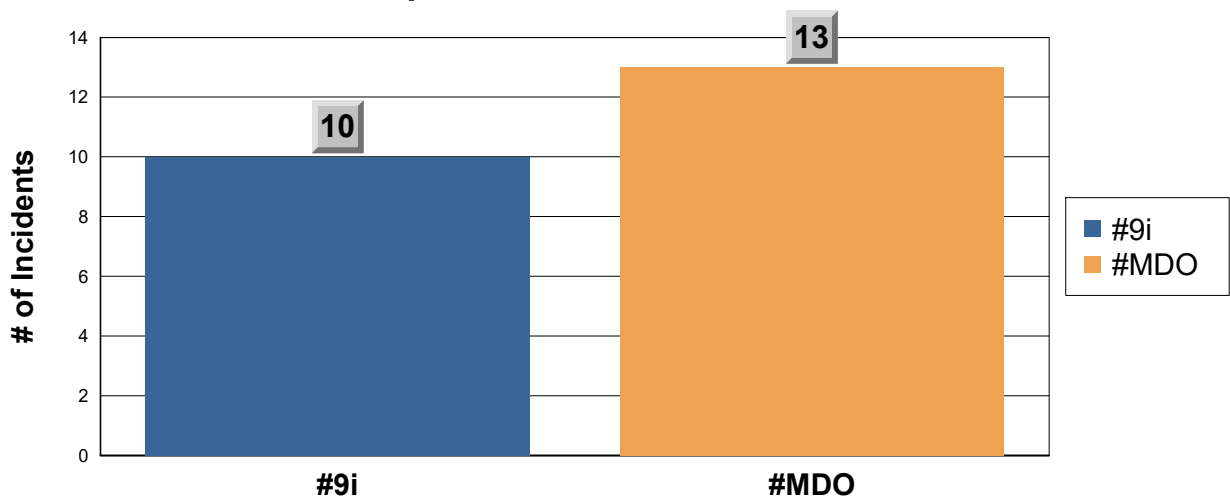
Miscellaneous Responses by Type



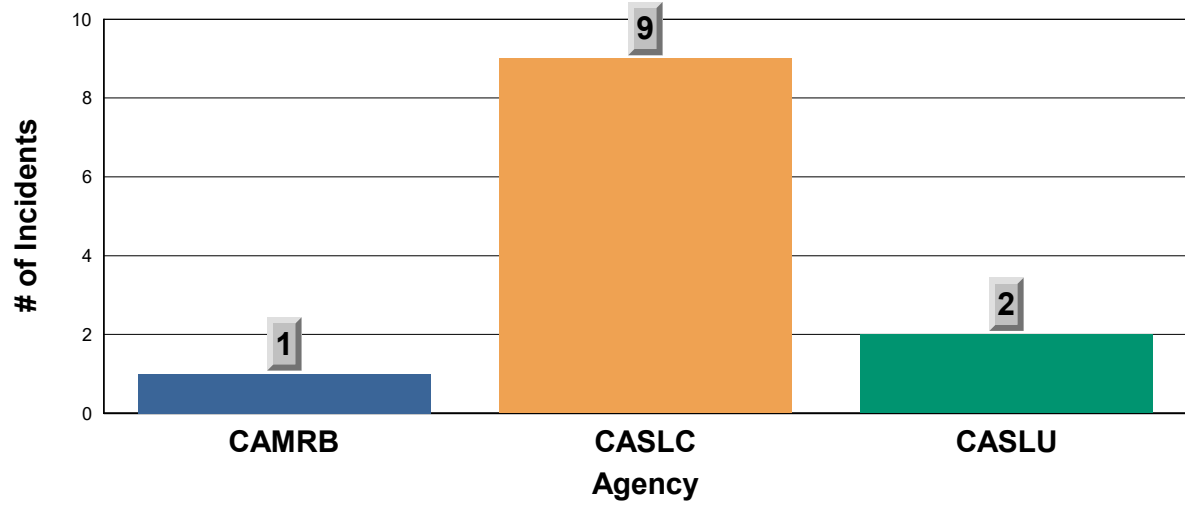
Responses to 9i and MDO



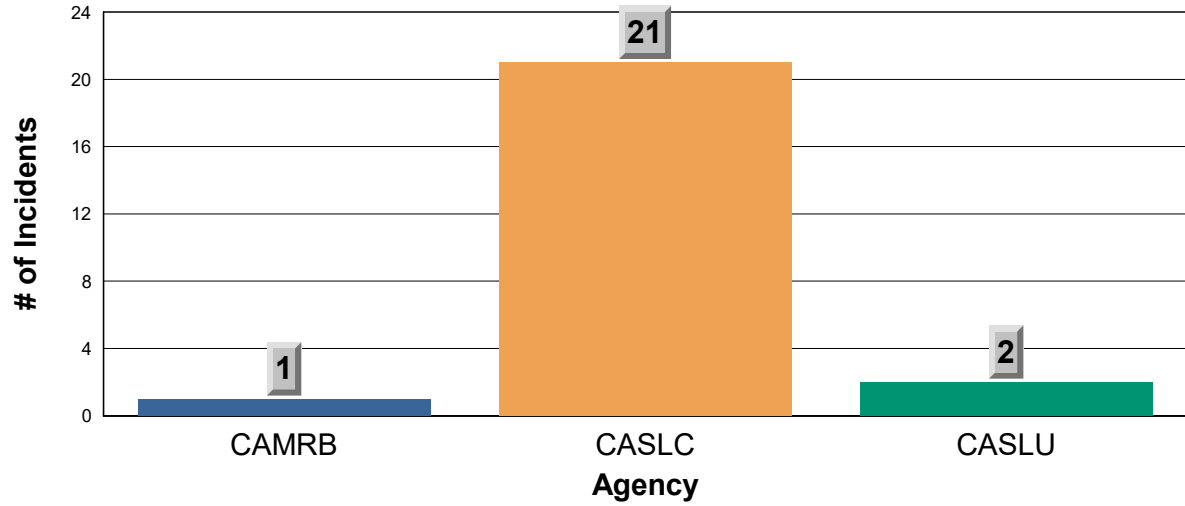
Responses to 9i and MDO YTD



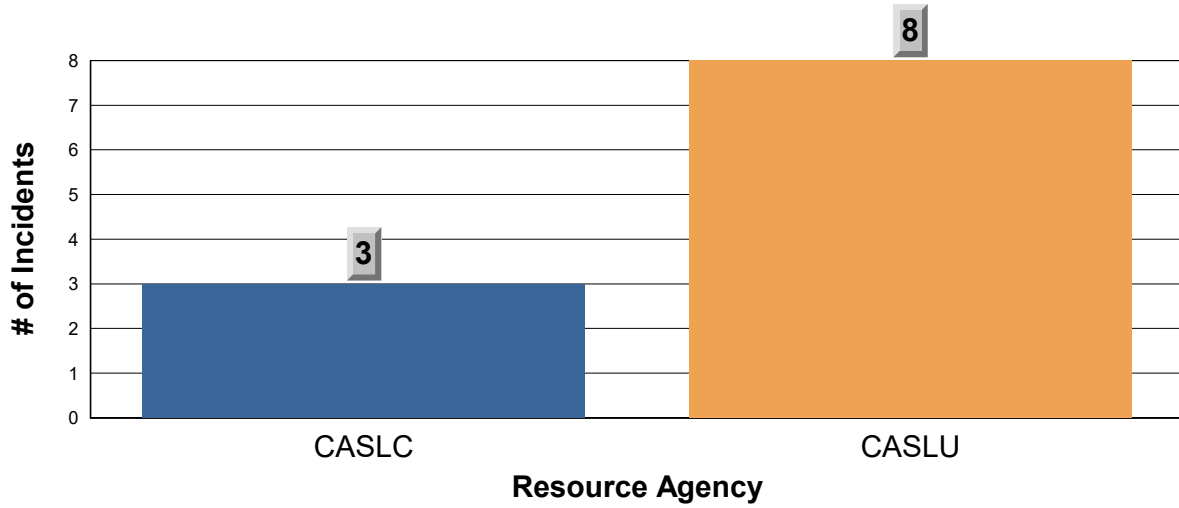
SBY Aid Given to Other Agency



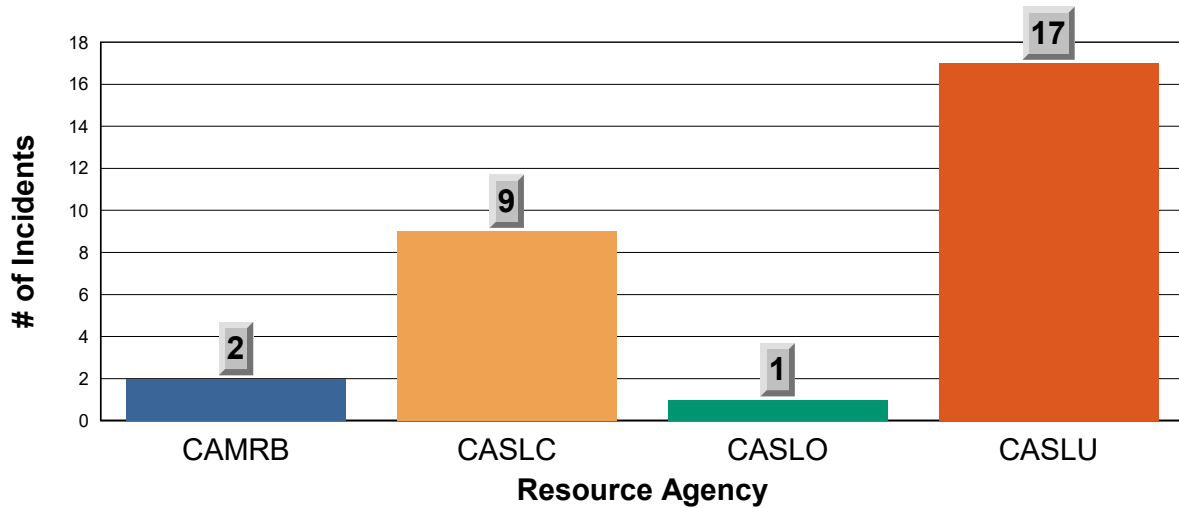
SBY Aid Given to Other Agency YTD



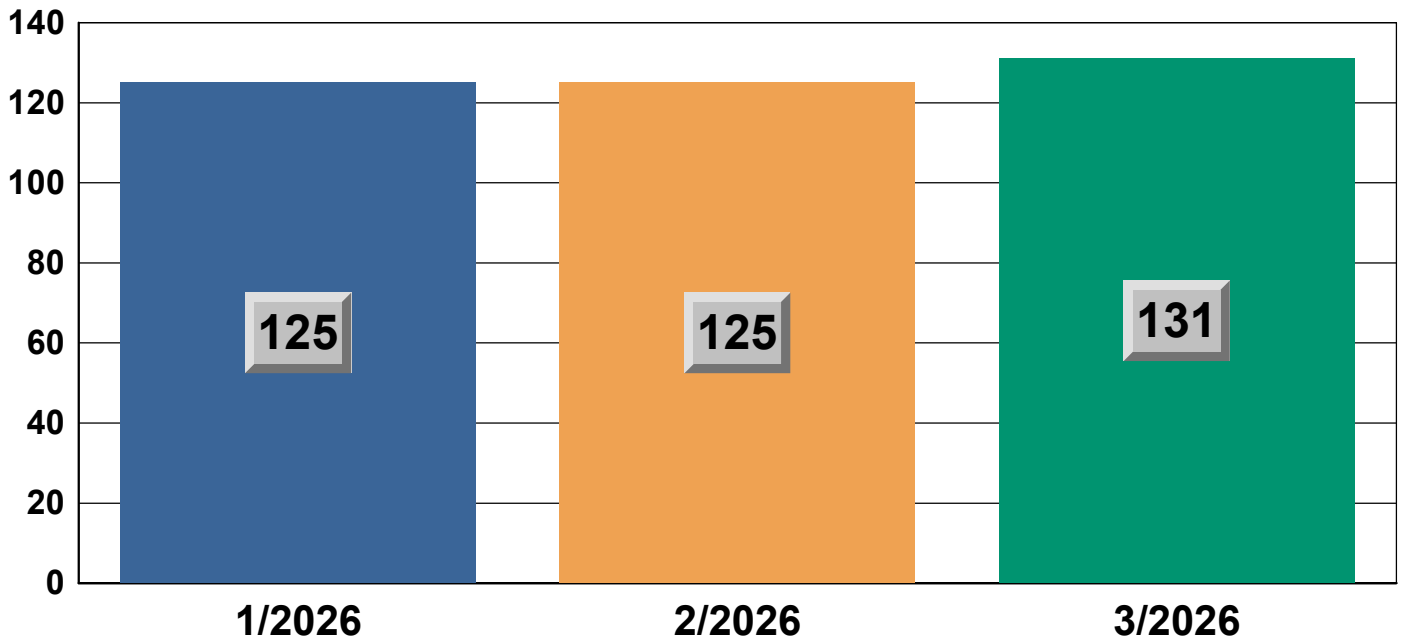
Other Agency Aid to SBY



Other Agency Aid to SBY YTD



Station 15 Incidents per Month



Reference:

SBY : SOUTH BAY FIRE STATION OR STATION 15

CASLC : SAN LUIS OBISPO COUNTY FIRE

CASLU : CAL FIRE

ME15 : MEDIC ENGINE 15

MS15 : MEDIC SQUAD 15

ME215 : MEDIC ENGINE 215

MEDICAL - TC : MEDICAL AID FOR A TRAFFIC COLLISION OR VEHICLE ACCIDENT

MEDICAL - LE : MEDICAL AID REQUIRING LAW ENFORCEMENT

MEDICAL - CPR : MEDICAL AID REQUIRING CARDIOPULMINARY RESUSCITATION