



March 7, 2013

**TO:** LOCSD Board of Directors

**FROM:** Margaret Falkner, Utility Systems Coordinator *mf*

**SUBJECT:** **Agenda Item 9B – 03/07/2013 Board Meeting**  
Utilities Department Report

**President**  
Leonard A. Moothart

**Vice President**  
Craig V. Baltimore

**Directors**  
Marshall E. Ochylski  
David S. Vogel  
R. Michael Wright

**Interim General Manager**  
Margaret Falkner

**District Accountant**  
Amparo Haber

**Fire Chief**  
Robert Lewin

**Battalion Chief**  
Phill Veneris

This report serves to keep the LOCSD Board of Directors and Public informed to the status of projects, services and/or activities of by the Utilities Department. The Utilities Department operates using proceeds from five funds: Water, Drainage, Solid Waste, Bayridge Estates, and Vista de Oro.

**WATER PRODUCTION AND CONSUMPTION**

The total production for the month of **January 2013** was **15.3 million gallons (MG)** this equates to an average daily demand of 492,500 gallons. This represents a **decrease** in production from last year by **20.1%**.

Fifty-seven percent of the water service area received bills for **16.2 MG** consumption for the period **December 11, 2012 through February 10, 2013** this generated revenue of **\$132,434**. **Revenue decreased** by **1.7%** and **consumption decreased** by almost **16.0%** when compared to last year at this time. For more information, see the tables and graphs attached.

**PRODUCTION AND RUNTIME HOURS BY WELL SITE**

Below are two tables that break down the production by well site and the runtime on the pump motor at each facility for the month of January 2013 with last year's totals for comparison:

<b>Production (MG) January</b>	<b>2013</b>	<b>2012</b>
Palisades	4.9670	5.7460
3rd Street	3.1662	0.0000
El Moro	1.1215	6.5469
10th Street	3.4039	5.7495
SouthBay (lower)	2.6090	1.0742
SouthBay (upper)	0.0000	0.0000
<b>TOTAL:</b>	<b>15.2676</b>	<b>19.1166</b>

<b>Runtime (Hours) December</b>	<b>2013</b>	<b>2012</b>
Palisades	105.5	184.2
3rd St	736.8	0.0
El Moro	51.1	314.6
10th St	177.0	294.7
SouthBay (lower)	739.9	274.1
SouthBay (upper)	0.0	0.0
<b>TOTAL:</b>	<b>1810.3</b>	<b>1067.6</b>

**Mailing Address:**  
P.O. Box 6064  
Los Osos, CA 93412

**Offices:**  
2122 9<sup>th</sup> Street, Suite 102  
Los Osos, CA 93402

**Phone:** 805/528-9370  
**FAX:** 805/528-9377

www.locsd.org

The production table shows water produced at each of the well sites. The runtime table verifies that pumping at Palisades reduced while pumping at 3<sup>rd</sup> Street and South Bay wells have increased. Please refer to the attached January 2013 "Well Log Summary" for more data regarding production, runtime hours, chemical usage, soundings, and alarms.

#### **UTILITIES DEPARTMENT MEETINGS**

Due to changes in staffing in the office, the Interim General Manager meets with the entire crew on a monthly basis. There is daily communication between the crew and Interim General Manager.

#### **UTILITIES DEPARTMENT OPERATIONS AND MAINTENANCE FOR WATER SYSTEM**

During the month of January 2013, crew provided weekly water sampling for water permit compliance, read water meters for billing, did groundskeeping, and performed monthly well soundings. In addition to these duties, the well houses at 8<sup>th</sup> and 10<sup>th</sup> Streets were fumigated for termites so, the wells were taken out of service and had to pass water quality tests prior to being brought back online. Crews also upgraded a water service line and meter on 4<sup>th</sup> St., repaired two main line breaks on 11<sup>th</sup> & 8<sup>th</sup> Streets, potholed in various sections of our water service area, and two crew members drove to Fresno to pick up the finished Utility truck.

Staff has submitted the monthly compliance monitoring report to the California Department of Public Health (CDPH) for January 2013 with no problems or violations noted.

#### **DRAINAGE WDID # 3 40MS05105**

In January 2013 crews cleared drainage inlets around town before the rain and performed groundskeeping at some of the drainage basins. Staff has been keeping informed about the latest Draft General National Pollutant Discharge Elimination System (NPDES) Permit for storm water discharges for small Municipal Separate Storm Sewer Systems (MS4). The third draft permit adoption hearing is set for February 5, 2013 at 9:00 am. Until the new permit is adopted, the District must stay in compliance with the general permit and submit an annual report on our current Storm Water Management Program (SWMP) for the period 2/1/12 through 1/31/13. Once the new draft is adopted the District will be required to file a Notice of Intent (NOI) and guidance documents through the state's electronic reporting system. More information about the draft order is available at the following URL: [http://www.waterboards.ca.gov/water\\_issues/programs/stormwater/docs/phsii2012/draft\\_order.pdf](http://www.waterboards.ca.gov/water_issues/programs/stormwater/docs/phsii2012/draft_order.pdf)

For more information, please visit:

[http://www.waterboards.ca.gov/water\\_issues/programs/stormwater/phase\\_ii\\_municipal.shtml](http://www.waterboards.ca.gov/water_issues/programs/stormwater/phase_ii_municipal.shtml)

#### **BAYRIDGE ESTATES WDID# 3 401027001**

Crews continue monitoring and groundskeeping. The assessments and property taxes are the source of revenues and the expenses are greater than revenue on an annual basis. We know this subdivision once connected to the Los Osos Wastewater Project, will no longer be maintained by the District but we will be required to continue maintenance and reporting to the RWQCB. On January 22, 2013 video logs of this subdivision were submitted to John Waddell in SLO County Public Works.

#### **VISTA DE ORO WDID# 3 401024001**

Crews continue monitoring and groundskeeping. The assessments are the sole source of revenue and the expenses are greater than the revenue on an annual basis. We know this subdivision, once connected to the Los Osos Wastewater Project will no longer be maintained by the District. In the meantime, we are required to continue maintenance and reporting to the RWQCB on our waste discharge orders. On January 22, 2013 video logs of this subdivision were submitted to John Waddell in SLO County Public Works.

**RECOMMENDATION**

Staff encourages the Board to ask any questions they may have with regard to the aforementioned report or any other related item that may or may not have been listed separately as an agenda item.

Attachments

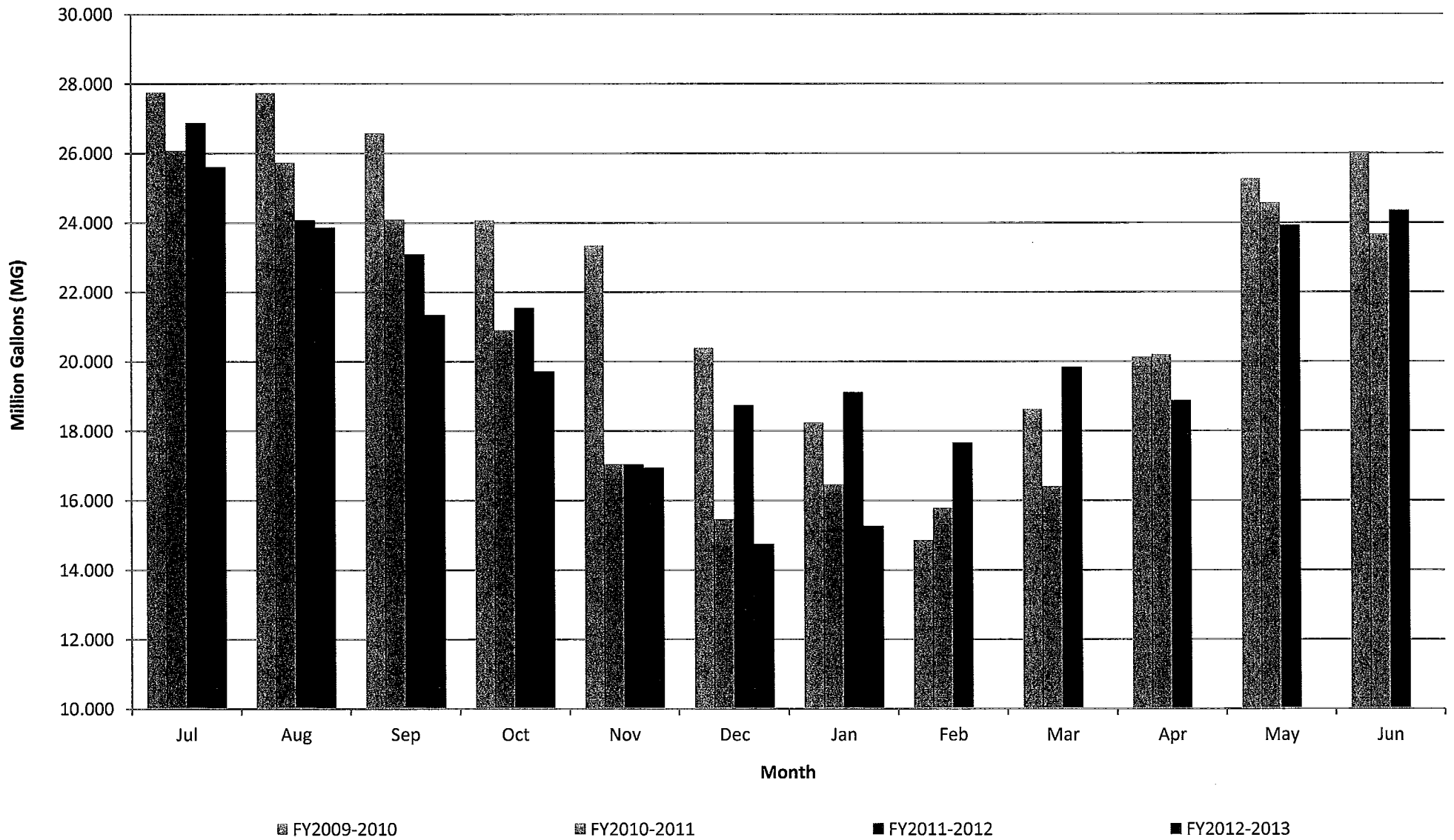
JANUARY 2013	8th St./ El Moro Well	3rd St./ Bayside Well	10th St. Well	South Bay Well	South Bay Upper Well	Palisades Well	All Wells TOTAL	Last Years TOTAL	Percent/ Differential
Total Gallons Produced, Mgal	1.1215	3.1662	3.4039	2.6090	0.0000	4.9670	15.2676	19.1166	-20.13%
Average Daily Flow, Mgal							0.4925	0.6167	
Total Gallons to Waste ( Filter Backwash ), Mgal	0.0586			0.0180	0.0000		0.0766	0.0378	
Total Gallons to Waste ( System Flushing ), Mgal							0.0000	0.0000	
Distribution System Losses ( Water Line Breaks ), Mgal							0.0406	0.0000	
Total Gallons Adjusted, Mgal	1.0629			2.5910			15.1504	19.0788	-20.59%
Pump Runtime, total hours	51.1	736.8	177.0	739.9		105.5	1810.3	1067.6	41.03%
Daily Avg. Runtime, hours/day	1.6	23.8	5.7	23.9		3.4			
Energy Used, kWatts	2151	5874	8219	8227		9235	33706	38867	-13.28%
Eff. Ratio, kWatts/hr	42.09	7.97	46.44	11.12		87.54			
Chlorine Used, total gallons	15.1		26.0	26.6		42.7	110.4	166	-33.48%
Aqua Mag, pounds	7.4		27.8	0.0		26.0	61.2	187.5	-67.36%
Static water level, ft.	28.00		157.00	117.25	0.00	97.20			
Pump water level, ft.	0.00		254.00	178.10	0.00	226.25	<b>8th Street off due to fumigation and required</b>		
Draw-down level, ft.	0.00		97.00	60.85	0.00	129.05	<b>lab testing before placing back into service</b>		
Gallons per minute	0		337	0	0	717			
Pressure, psi	0		35	61	0	61			
<b>Alarm Events</b>									
YES / NO	YES		YES	NO	NO	YES			
<b>Type of event</b>									
Well Failure							0		
Power Failure							0		
Low Chlorine	1		1				2		
Other:	1		1			2	4		
<b>Total number alarms</b>	2		2	0		2	6	6	0.00%

## LOCSD Water Data

<b>Water Production Data in Million Gallons</b>				
	<b>FY 09-10</b>	<b>FY 10-11</b>	<b>FY 11-12</b>	<b>FY 12-13</b>
Jul	27.750	26.066	26.868	25.600
Aug	27.736	25.724	24.064	23.862
Sep	26.573	24.087	23.086	21.340
Oct	24.065	20.895	21.543	19.708
Nov	23.339	17.042	17.046	16.939
Dec	20.388	15.460	18.745	14.747
Jan	18.234	16.463	19.117	15.268
Feb	14.855	15.783	17.662	
Mar	18.623	16.402	19.843	
Apr	20.125	20.195	18.873	
May	25.257	24.563	23.914	
Jun	26.011	23.660	24.347	
<b>TOTAL</b>	<b>272.954</b>	<b>246.338</b>	<b>255.107</b>	<b>137.463</b>

Consumption is billed for a two month period every month.  
 Revenue is based on gallons billed - not cash received.  
 Production is recorded daily.

## Historical to Present LOCSO Well Production Data

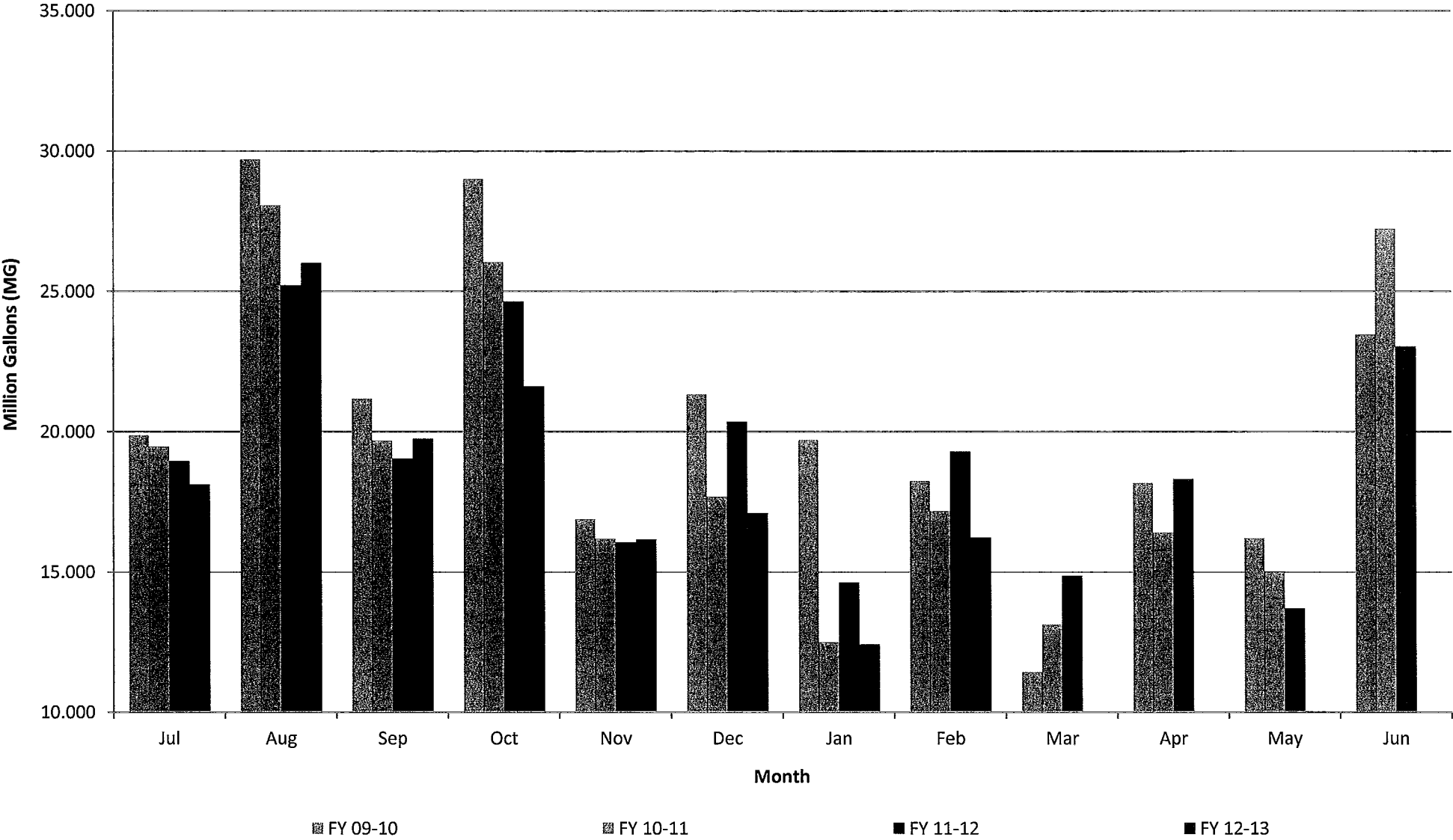


## LOCSD Water Data

<b>Water Consumption Data in Million Gallons</b>						
<b>% of Service Area</b>	<b>Billing Period</b>		<b>FY 09-10</b>	<b>FY 10-11</b>	<b>FY 11-12</b>	<b>FY 12-13</b>
43	5/11 to 7/10	Jul	19.866	19.463	18.950	18.110
57	6/11 to 8/10	Aug	29.690	28.050	25.210	26.006
43	7/11 to 9/10	Sep	21.168	19.674	19.044	19.748
57	8/11 to 10/10	Oct	29.001	26.027	24.636	21.617
43	9/11 to 11/10	Nov	16.879	16.179	16.048	16.155
57	10/11 to 12/10	Dec	21.324	17.683	20.355	17.096
43	11/11 to 1/10	Jan	19.704	12.485	14.623	12.406
57	12/11 to 2/10	Feb	18.245	17.161	19.294	16.223
43	1/11 to 3/10	Mar	11.420	13.109	14.858	
57	2/11 to 4/10	Apr	18.168	16.396	18.313	
43	3/11 to 5/10	May	16.200	14.975	13.685	
57	4/11 to 6/10	Jun	23.457	27.212	23.029	
		<b>TOTAL</b>	<b>245.121</b>	<b>228.414</b>	<b>228.044</b>	<b>147.362</b>

Consumption is billed for a two month period every month.  
 Revenue is based on gallons billed - not cash received.  
 Production is recorded daily.

# Historical to Present LOCS D Water Consumption





## LOCSD Water Data

Water Revenue Data						
% of Service Area	Billing Period		FY 09-10	FY 10-11	FY 11-12	FY 12-13
43	5/11 to 7/10	Jul	\$121,313.34	\$125,133.24	\$129,524.46	\$127,737.70
57	6/11 to 8/10	Aug	\$174,288.70	\$174,057.07	\$167,062.07	\$175,798.70
43	7/11 to 9/10	Sep	\$128,441.19	\$134,756.85	\$134,650.62	\$139,628.43
57	8/11 to 10/10	Oct	\$177,761.67	\$177,362.45	\$165,624.63	\$163,698.98
43	9/11 to 11/10	Nov	\$110,704.57	\$112,171.55	\$113,044.46	\$128,918.55
57	10/11 to 12/10	Dec	\$128,548.32	\$126,236.55	\$141,492.06	\$142,026.32
43	11/11 to 1/10	Jan	\$91,271.12	\$90,676.15	\$105,371.44	\$104,328.08
57	12/11 to 2/10	Feb	\$109,173.95	\$119,946.90	\$134,692.14	\$132,433.64
43	1/11 to 3/10	Mar	\$70,246.70	\$94,298.10	\$105,313.67	
57	2/11 to 4/10	Apr	\$108,978.71	\$116,335.40	\$128,368.97	
43	3/11 to 5/10	May	\$97,654.74	\$96,549.67	\$99,287.66	
57	4/11 to 6/10	Jun	\$140,285.55	\$177,009.32	\$156,744.35	
		<b>TOTAL</b>	<b>\$1,458,668.56</b>	<b>\$1,544,533.25</b>	<b>\$1,581,176.53</b>	<b>\$1,114,570.40</b>

Consumption is billed for a two month period every month.  
 Revenue is based on gallons billed - not cash received.  
 Production is recorded daily.

# Historical to Present LOCS D Water Revenue

