



December 22, 2014

TO: LOCSD Board of Directors
FROM: Margaret Falkner, Utility Compliance Technician III
SUBJECT: **Agenda Item 9B – 1/8/2015 Board Meeting**
Utilities Department Report for November 2014

2015 Board of Directors
Charles L. Cesena
Marshall E. Ochylski
Jon-Erik G. Storm
Louis G. Tornatzky
R. Michael Wright

General Manager
Kathy A. Kivley

District Accountant
Michael L. Doyel

Fire Chief
Robert Lewin

Battalion Chief
Phill Veneris

WATER PRODUCTION

The total production for the month of **November 2014** was approximately **14.5 million gallons (MG)** this equates to an average daily demand of 482,700 gallons. This represents a **decrease** in production from last year by approximately **17%**.

Fifty-seven percent of the service area received bills for approximately **15.2 MG** consumption for the period **October 13, 2014 through December 11, 2014**. This generated **\$145,977** in revenue. Comparisons to last December are omitted due to delays in new software implementation in 2013. Graphs and tables are attached.

PRODUCTION AND RUNTIME HOURS BY WELL SITE

Below are two tables that break down the production by well site and the runtime on the pump motor for the month of November 2014. Last year's totals are included for comparison:

| Production (MG) November | 2014 | 2013 |
|---------------------------------|----------------|----------------|
| Palisades | 5.0120 | 7.2510 |
| 3rd Street | 3.2029 | 2.9189 |
| El Moro | 4.1815 | 5.2594 |
| 10th Street | 4.7727 | 5.0019 |
| South Bay (lower) | 0.0000 | 0.0000 |
| South Bay (upper) | 0.0000 | 0.0000 |
| TOTAL: | 17.1691 | 20.4312 |

| Runtime (Hours) November | 2014 | 2013 |
|---------------------------------|----------------|----------------|
| Palisades | 194.8 | 212.0 |
| 3rd St | 651.7 | 672.4 |
| El Moro | 219.0 | 247.2 |
| 10th St | 172.1 | 272.3 |
| South Bay (lower) | 0.0 | 0.0 |
| South Bay (upper) | 0.0 | 0.0 |
| TOTAL: | 1,173.4 | 1,237.6 |

Mailing Address:
P.O. Box 6064
Los Osos, CA 93412

Offices:
2122 9th Street, Suite 102
Los Osos, CA 93402

Phone: 805/528-9370
FAX: 805/528-9377

www.locsd.org

Please refer to the attached November 2014 "Well Log Summary" for more data regarding production, runtime hours, chemical usage, soundings, and alarms.

CALIFORNIA STATE OF EMERGENCY DUE TO DROUGHT

On January 17, 2014, Governor Brown declared an emergency due to drought. He has called on all Californians to restrain water use. Attached to this report are graphs with tables which provide information on the District's water well depths. *We remain officially in a drought.*

WATER CONSERVATION

Our Water Conservation Message *"Together We Can Bear It: Save Los Osos Water"*



A water conservation banner is being displayed on the northwest corner of Los Olivos Avenue and South Bay Boulevard. Messages continue to be displayed on the Rotary sign at the corner of Los Osos Valley Road and South Bay Boulevard.

SAN LUIS OBISPO COUNTY WATER CONSERVATION REBATE PROGRAM

All Los Osos residents that will be connected to the Los Osos Wastewater Project may qualify for rebates on plumbing fixtures. The District web site has a link to the County's rebate web site. Here is a link to the County's web site which has information for residents in the prohibition zone. <http://conservelososos.org/>

UTILITIES DEPARTMENT OPERATIONS AND MAINTENANCE FOR WATER SYSTEM

During the month of November 2014, crew provided weekly water sampling for water permit compliance, read water meters for billing, and performed monthly well soundings. In addition to their regular schedule, crews upgraded several services and performed maintenance on the transfer pump house at 10th Street. Crews continued work on the meter replacement program, and fire hydrant maintenance.

Staff submitted the monthly monitoring report to the State Water Resource Control Board Drinking Water Division for November 2014 with no violations noted.

DRAINAGE WDID # 3 40M2000133

The District complies with the General National Pollutant Discharge Elimination System (NPDES) Permit for storm water discharges for small Municipal Separate Storm Sewer Systems (MS4). Under the new permit, all Community Services Districts are considered "Non-traditional" MS4s. Our annual report under the new permit was submitted to the state electronically on October 8, 2014 which covers the fiscal year July 2013 through June 2014.

We received 1.56" of rain in November. This brings our calendar year total to 7.54" through November 2014. Rainfall is measured at the water operations facility on 8th Street and El Moro Avenue.

BAYRIDGE ESTATES WDID# 3 401027001

Crews continue monitoring and groundskeeping. In November crews continued repaired a retaining wall at our Bayridge facility. Staff submitted the semi-annual report to the Regional Water Quality Control Board in November for the period May through October 2014. Once connected to the Los Osos Wastewater Project, the District crews will no longer maintain the septic system.

VISTA DE ORO WDID# 3 401024001

Crews continue monitoring and groundskeeping. Staff submitted the semi-annual report to the Regional Water Quality Control Board in November for the period May through October 2014. Once connected to the Los Osos Wastewater Project, the District crews will no longer maintain the septic system.

RECOMMENDATION

Staff encourages the Board to ask any questions they may have with regard to the aforementioned report or any other related item that may be listed separately as an agenda item.

Attachments

| NOVEMBER 2014 | 8th St./ EI Moro Well | 3rd St./ Bayside Well | 10th St. Well | South Bay Well | South Bay Upper Well | Palisades Well | All Wells TOTAL | Last Years TOTAL | Percent% Differential |
|--------------------------------------------------------|-----------------------|-----------------------|---------------|----------------|----------------------|----------------|--------------------------------------|------------------|-----------------------|
| Total Gallons Produced, Mgal | 2.4278 | 2.9545 | 4.6585 | 0.0000 | 0.0000 | 4.4410 | 14.4818 | 17.4356 | -16.94% |
| Average Daily Flow, Mgal | | | | | | | 0.4827 | | |
| Total Gallons to Waste (Filter Backwash), Mgal | 0.0000 | | | 0.0000 | 0.0000 | | 0.0000 | 0 | |
| Total Gallons to Waste (System Flushing), Mgal | | | | | | | 0.0000 | 0 | |
| Distribution System Losses (Water Line Breaks), Mgal | | | | | | | 0.0000 | 0.0002 | |
| Total Gallons Adjusted, Mgal | 2.4278 | | | 0.0000 | | | 14.4818 | 17.4354 | -16.94% |
| Pump Runtime, total hours | 118.3 | 669.4 | 250.9 | 0.0 | | 134.8 | 1173.4 | 1237.6 | -5.47% |
| Daily Avg. Runtime, hours/day | 3.9 | 22.3 | 8.4 | 0.0 | | 4.5 | | | |
| Energy Used, kWatts | 4708 | 5335 | 10347 | 139 | | 10357 | 30886 | 35861 | -13.87% |
| Eff. Ratio, kWatts/hr | 39.80 | 7.97 | 41.24 | 0.00 | | 76.83 | | | |
| Chlorine Used, total gallons | 35.3 | 77.1 | 25.2 | 0.0 | | 51.1 | 137.6 | 122.6 | 12.22% |
| Aqua Mag, pounds | 38.2 | | 47.8 | 0.0 | | 34.4 | 120.4 | 172.5 | -30.20% |
| Static water level, ft. | 34.90 | 6.70 | 156.70 | 116.20 | 0.00 | 103.60 | | | |
| Pump water level, ft. | 141.20 | 54.90 | 250.70 | 0.00 | 0.00 | 250.90 | Both South Bay Wells Out of Service. | | |
| Draw-down level, ft. | 106.30 | 48.20 | 94.00 | 0.00 | 0.00 | 147.30 | | | |
| Gallons per minute | 354 | 74 | 339 | 0 | 0 | 562 | | | |
| Pressure, psi | 96 | 86 | 35 | 0 | 0 | 85 | | | |
| Alarm Events | | | | | | | | | |
| YES / NO | YES | YES | YES | NO | NO | YES | | | |
| Type of event | | | | | | | | | |
| Well Failure | | | | | | | 0 | | |
| Power Failure | | | | | | | 0 | | |
| Low Chlorine | 4 | 1 | 1 | | | 1 | 7 | | |
| Other: | 3 | | 1 | | | 1 | 5 | | |
| Total number alarms | 7 | 1 | 2 | 0 | 0 | 2 | 12 | 1 | 1100.00% |

Well Log Summaries

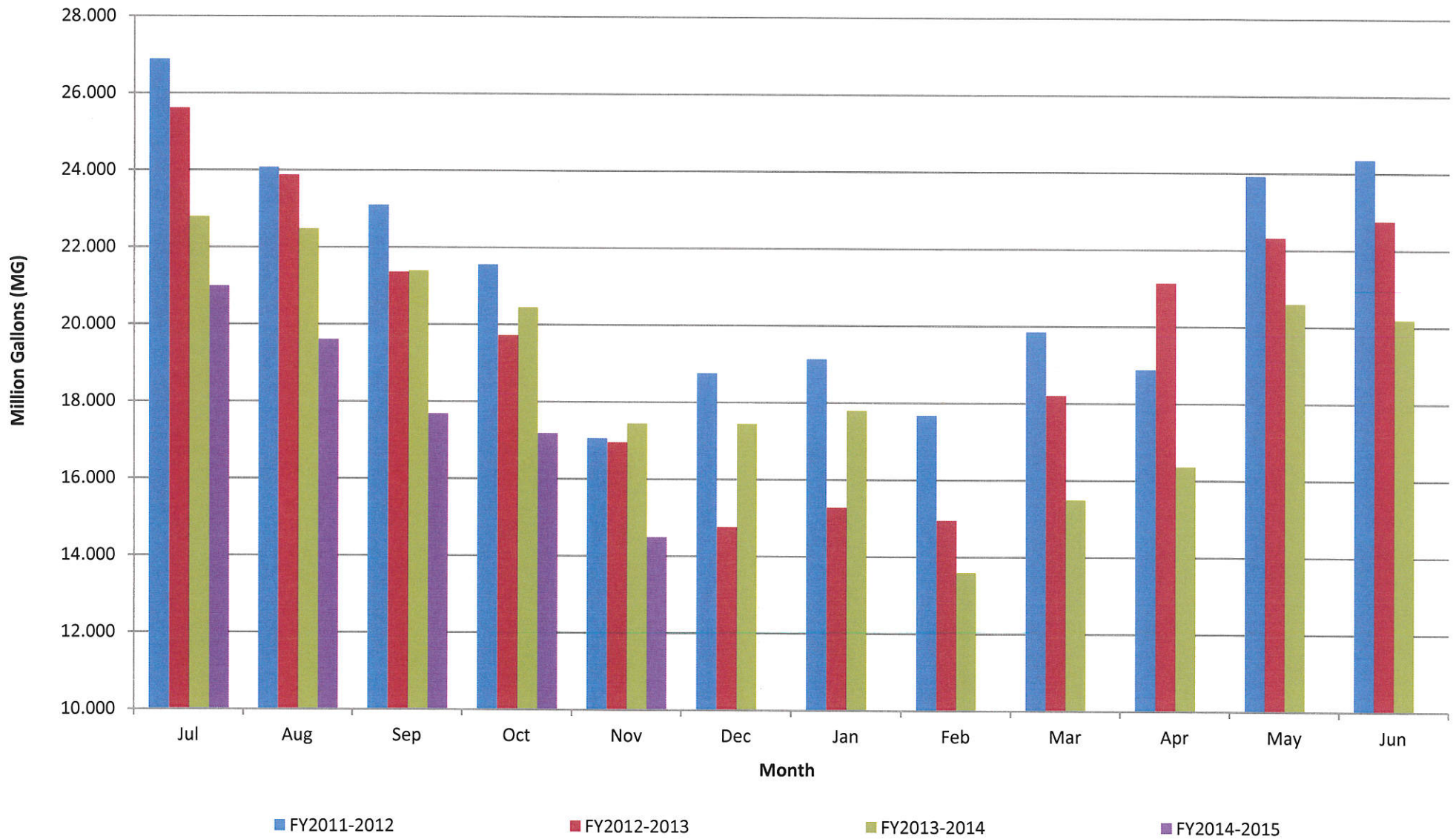
LOCSD Water Data

Water Production Data in Million Gallons

| | FY 11-12 | FY 12-13 | FY 13-14 | FY 14-15 |
|--------------|-----------------|-----------------|-----------------|-----------------|
| Jul | 26.868 | 25.600 | 22.779 | 20.979 |
| Aug | 24.064 | 23.862 | 22.470 | 19.593 |
| Sep | 23.086 | 21.340 | 21.380 | 17.668 |
| Oct | 21.543 | 19.708 | 20.431 | 17.169 |
| Nov | 17.046 | 16.939 | 17.436 | 14.482 |
| Dec | 18.745 | 14.747 | 17.431 | |
| Jan | 19.117 | 15.268 | 17.780 | |
| Feb | 17.662 | 14.940 | 13.584 | |
| Mar | 19.843 | 18.193 | 15.476 | |
| Apr | 18.873 | 21.118 | 16.354 | |
| May | 23.914 | 22.310 | 20.591 | |
| Jun | 24.347 | 22.743 | 20.179 | |
| TOTAL | 255.107 | 236.767 | 225.890 | 89.891 |

Consumption is billed for a two month period every month.
Revenue is based on gallons billed - not cash received.
Production is recorded daily.

Historical to Present LOCS D Well Production Data

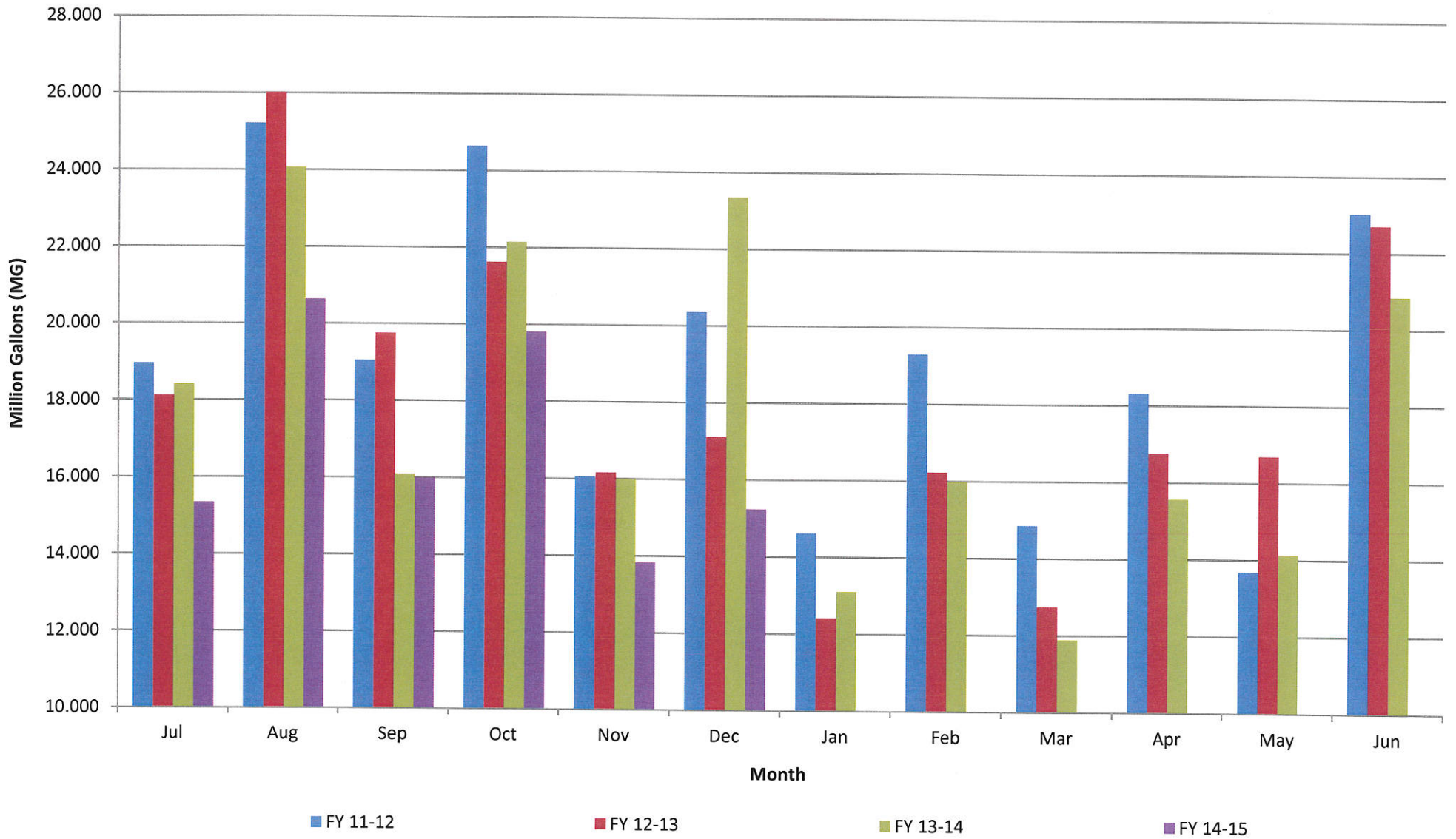


LOCSD Water Data

| Water Consumption Data in Million Gallons | | | | | | |
|--------------------------------------------------|-----------------------|--------------|-----------------|-----------------|-----------------|-----------------|
| % of Service Area | Billing Period | | FY 11-12 | FY 12-13 | FY 13-14 | FY 14-15 |
| 43 | 5/11 to 7/10 | Jul | 18.950 | 18.110 | 18.402 | 15.330 |
| 57 | 6/11 to 8/10 | Aug | 25.210 | 26.006 | 24.061 | 20.627 |
| 43 | 7/11 to 9/10 | Sep | 19.044 | 19.748 | 16.087 | 15.989 |
| 57 | 8/11 to 10/10 | Oct | 24.636 | 21.617 | 22.142 | 19.804 |
| 43 | 9/11 to 11/10 | Nov | 16.048 | 16.155 | 15.994 | 13.830 |
| 57 | 10/11 to 12/10 | Dec | 20.355 | 17.096 | 23.342 | 15.236 |
| 43 | 11/11 to 1/10 | Jan | 14.623 | 12.406 | 13.105 | |
| 57 | 12/11 to 2/10 | Feb | 19.294 | 16.223 | 15.969 | |
| 43 | 1/11 to 3/10 | Mar | 14.858 | 12.737 | 11.886 | |
| 57 | 2/11 to 4/10 | Apr | 18.313 | 16.756 | 15.559 | |
| 43 | 3/11 to 5/10 | May | 13.685 | 16.686 | 14.131 | |
| 57 | 4/11 to 6/10 | Jun | 23.029 | 22.709 | 20.852 | |
| | | TOTAL | 228.044 | 216.249 | 211.530 | 100.816 |

Consumption is billed for a two month period every month.
 Revenue is based on gallons billed - not cash received.
 Production is recorded daily.

Historical to Present LOCS D Water Consumption

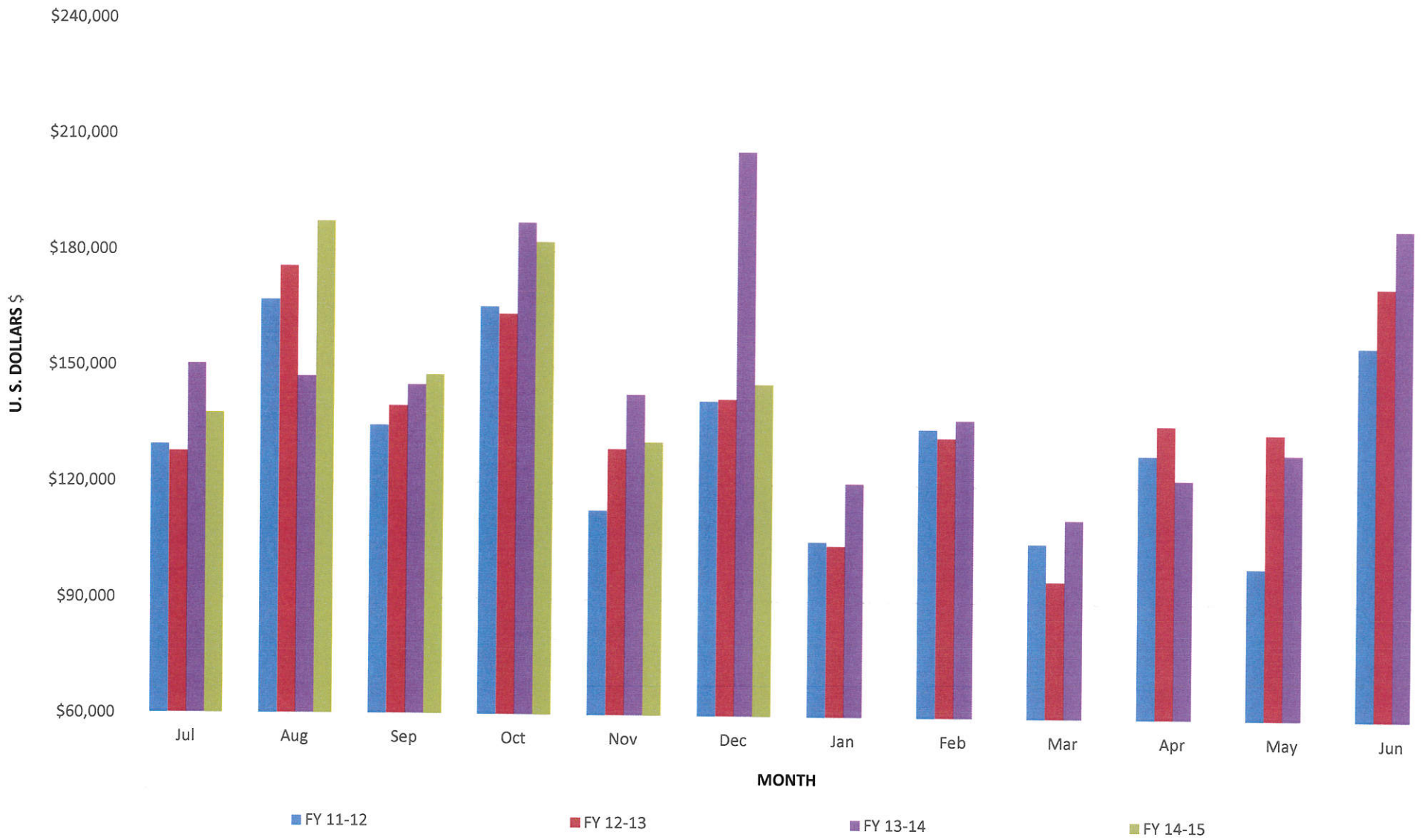


LOCSD Water Data

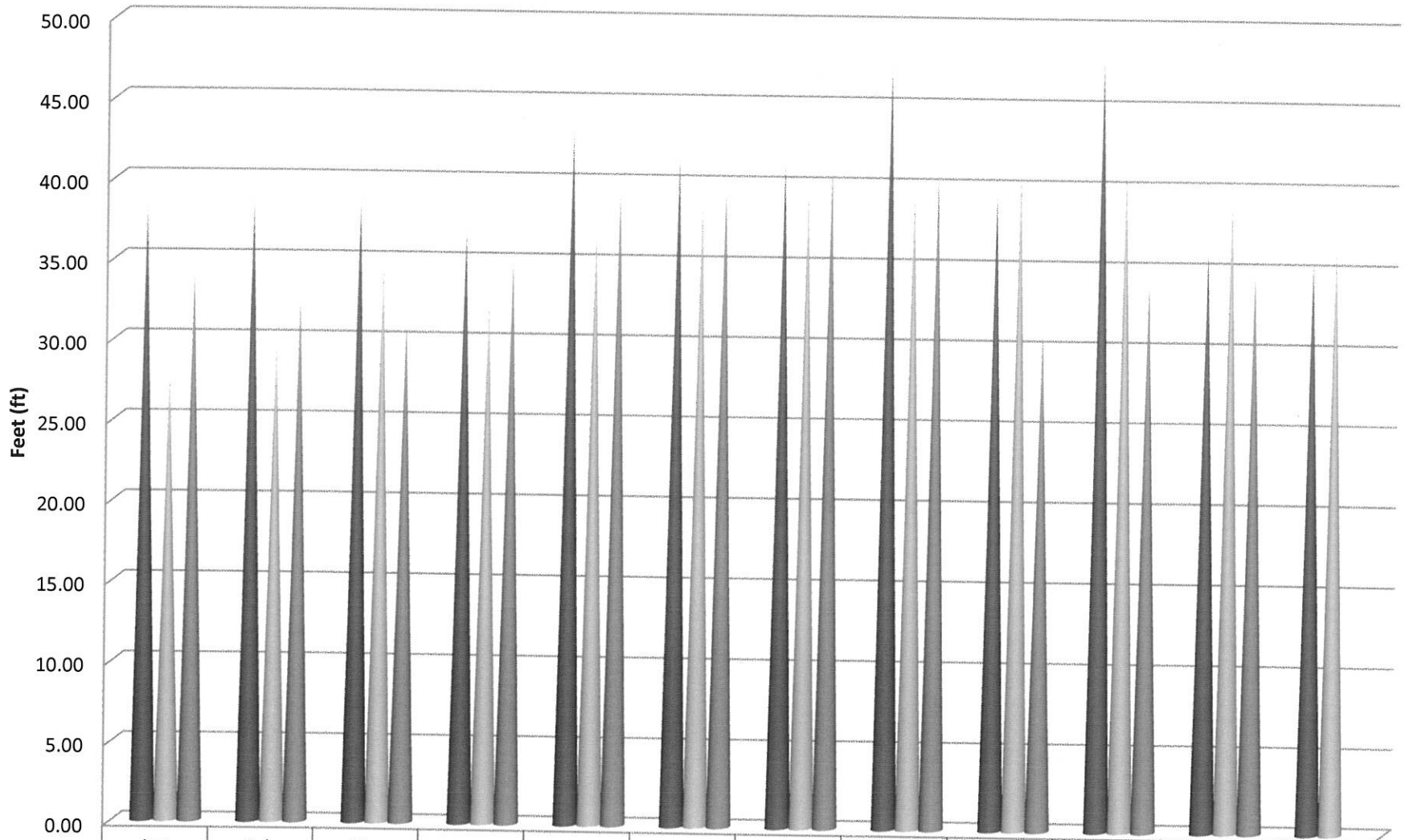
| Water Revenue Data | | | | | | |
|--------------------|----------------|-----|-----------------------|-----------------------|-----------------------|---------------------|
| % of Service Area | Billing Period | | FY 11-12 | FY 12-13 | FY 13-14 | FY 14-15 |
| 43 | 5/11 to 7/10 | Jul | \$129,524.46 | \$127,737.70 | \$150,401.90 | \$137,752.98 |
| 57 | 6/11 to 8/10 | Aug | \$167,062.07 | \$175,798.70 | \$147,246.54 | \$187,468.02 |
| 43 | 7/11 to 9/10 | Sep | \$134,650.62 | \$139,628.43 | \$145,135.28 | \$147,808.06 |
| 57 | 8/11 to 10/10 | Oct | \$165,624.63 | \$163,698.98 | \$187,431.78 | \$182,463.96 |
| 43 | 9/11 to 11/10 | Nov | \$113,044.46 | \$128,918.55 | \$143,029.03 | \$130,772.31 |
| 57 | 10/11 to 12/10 | Dec | \$141,492.06 | \$142,026.32 | \$206,187.91 | \$145,977.27 |
| 43 | 11/11 to 1/10 | Jan | \$105,371.44 | \$104,328.08 | \$120,500.40 | |
| 57 | 12/11 to 2/10 | Feb | \$134,692.14 | \$132,433.64 | \$137,045.65 | |
| 43 | 1/11 to 3/10 | Mar | \$105,313.67 | \$95,487.96 | \$111,475.31 | |
| 57 | 2/11 to 4/10 | Apr | \$128,368.97 | \$135,947.81 | \$121,943.68 | |
| 43 | 3/11 to 5/10 | May | \$99,287.66 | \$133,939.00 | \$128,784.61 | |
| 57 | 4/11 to 6/10 | Jun | \$156,744.35 | \$172,139.37 | \$187,230.13 | |
| TOTAL | | | \$1,581,176.53 | \$1,652,084.54 | \$1,786,412.22 | \$932,242.60 |

Consumption is billed for a two month period every month.
 Revenue is based on gallons billed - not cash received.
 Production is recorded daily.

Historical to Present LOCSD Water Revenue

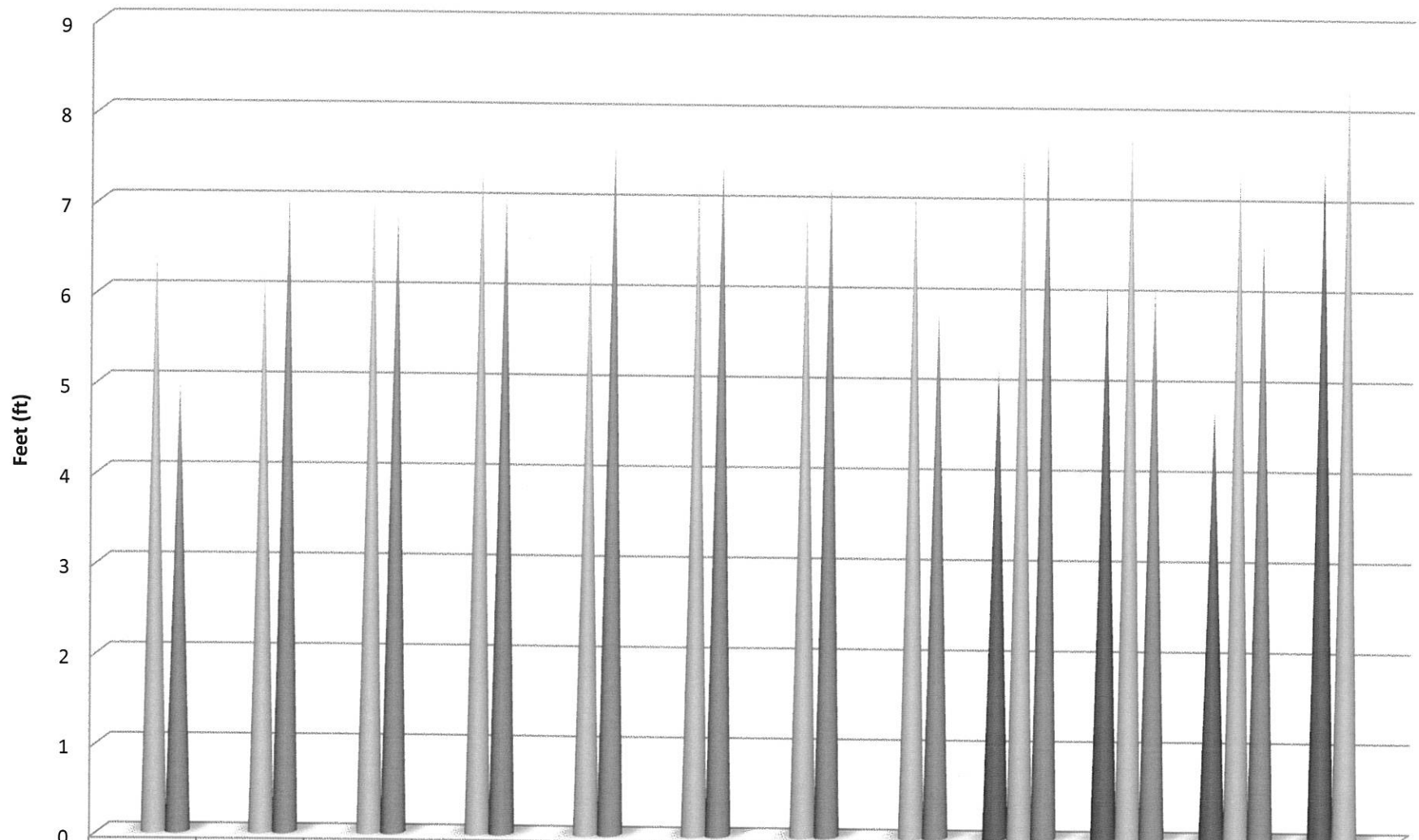


8th Street Well Static Water Levels



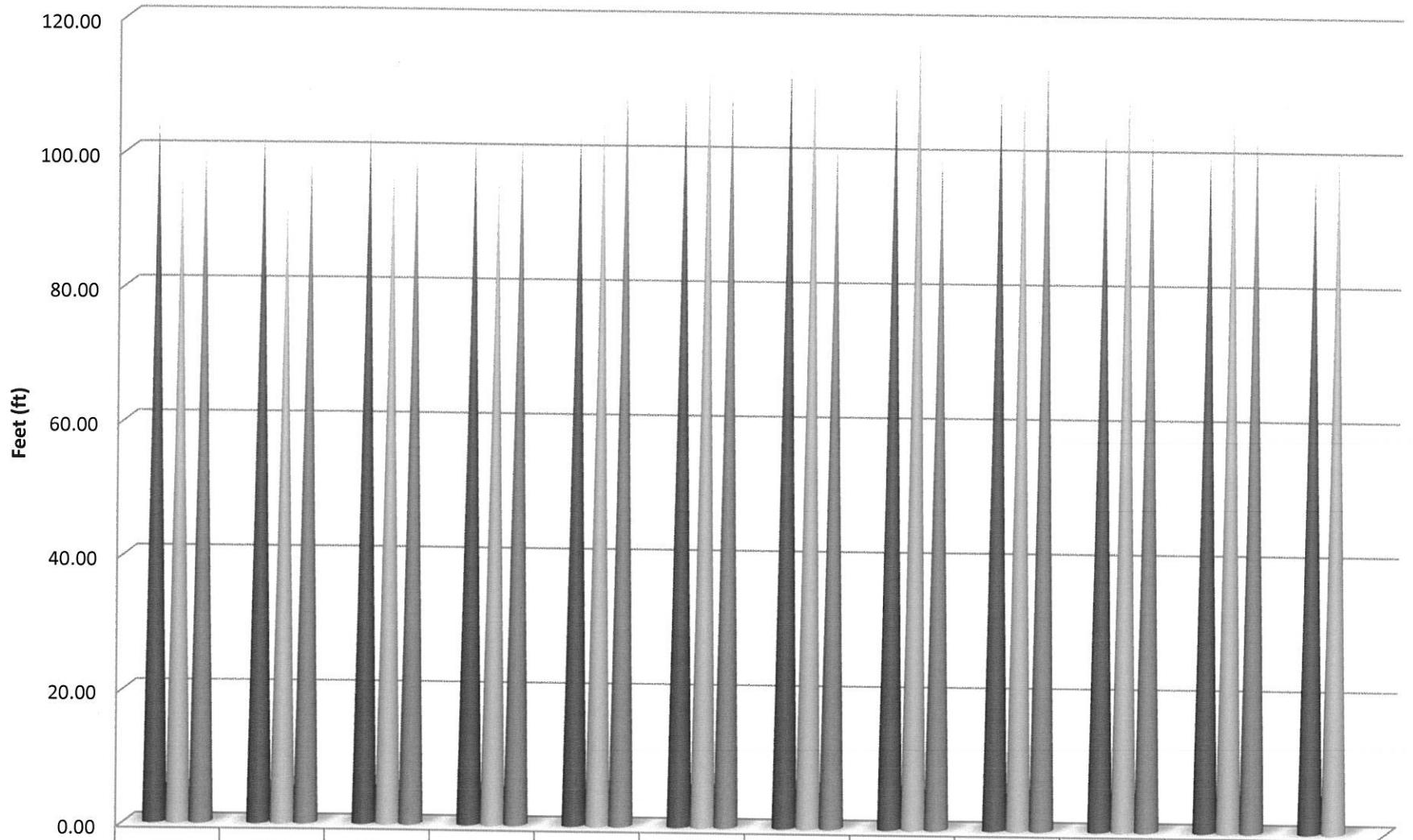
| | Jan | Feb | Mar | Apr | May | Jun | Jul | Aug | Sep | Oct | Nov | Dec |
|--------|-------|-------|-------|-------|-------|-------|-------|-------|-------|-------|-------|-------|
| ■ 2012 | 38.40 | 38.90 | 38.90 | 37.20 | 43.45 | 41.90 | 41.40 | 47.60 | 39.70 | 48.10 | 36.20 | 35.80 |
| ■ 2013 | 28.00 | 29.80 | 34.80 | 32.50 | 37.20 | 39.00 | 39.80 | 39.80 | 41.10 | 41.30 | 39.50 | 37.00 |
| ■ 2014 | 34.20 | 32.50 | 31.30 | 35.10 | 39.40 | 39.70 | 41.10 | 40.70 | 31.20 | 34.30 | 34.90 | |

3rd Street Well Static Water Levels



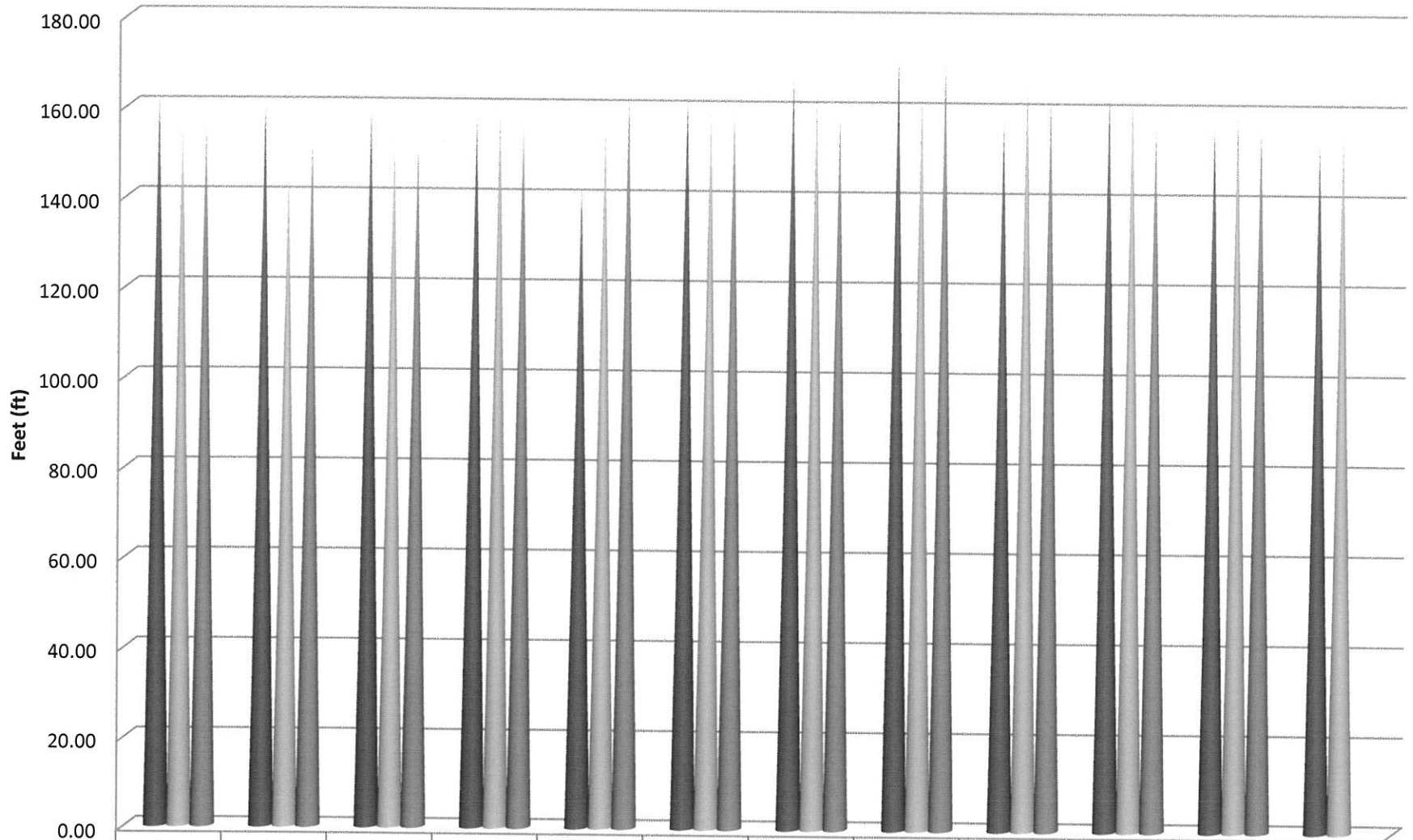
| | Jan | Feb | Mar | Apr | May | Jun | Jul | Aug | Sep | Oct | Nov | Dec |
|------|------|------|------|------|------|------|------|------|------|------|------|------|
| 2012 | | | | | | | | | 5.25 | 6.20 | 4.80 | 7.50 |
| 2013 | 6.50 | 6.30 | 7.10 | 7.50 | 6.50 | 7.30 | 7.00 | 7.30 | 7.70 | 7.90 | 7.50 | 8.45 |
| 2014 | 5.00 | 7.10 | 6.90 | 7.10 | 7.70 | 7.55 | 7.30 | 5.90 | 7.80 | 6.20 | 6.70 | |

Palisades Well Static Water Levels



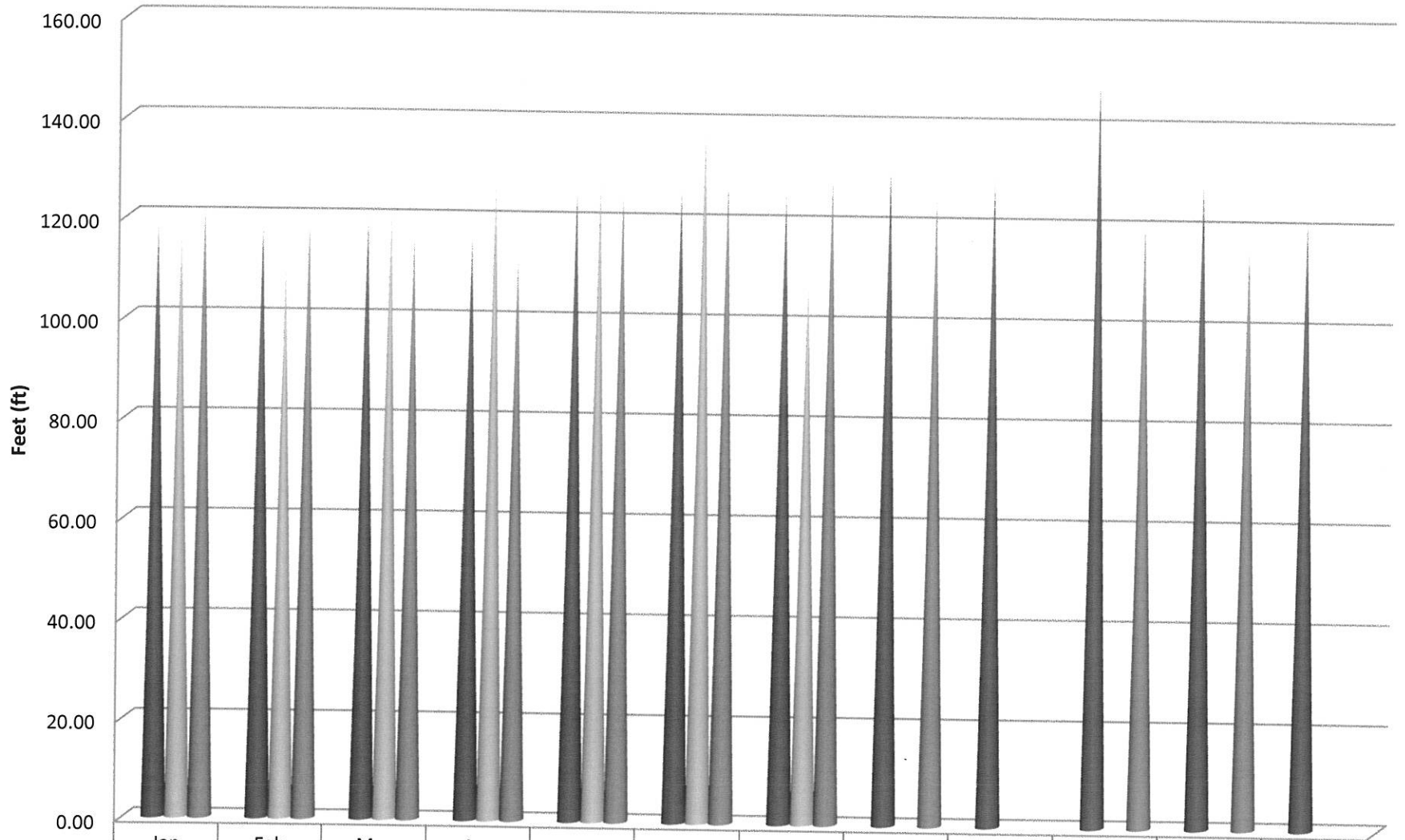
| | Jan | Feb | Mar | Apr | May | Jun | Jul | Aug | Sep | Oct | Nov | Dec |
|--------|--------|--------|--------|--------|--------|--------|--------|--------|--------|--------|--------|--------|
| ■ 2012 | 105.00 | 102.60 | 103.50 | 102.30 | 103.10 | 109.30 | 113.80 | 111.40 | 110.30 | 104.60 | 100.90 | 98.50 |
| ■ 2013 | 97.20 | 92.30 | 97.90 | 96.20 | 104.90 | 113.60 | 112.60 | 118.70 | 109.80 | 109.90 | 106.50 | 101.35 |
| ■ 2014 | 100.40 | 98.60 | 99.90 | 102.10 | 109.85 | 110.3 | 101.60 | 100.05 | 114.80 | 103.70 | 103.60 | |

10th Street Well Static Water Levels



| | Jan | Feb | Mar | Apr | May | Jun | Jul | Aug | Sep | Oct | Nov | Dec |
|--------|--------|--------|--------|--------|--------|--------|--------|--------|--------|--------|--------|--------|
| ■ 2012 | 162.85 | 160.60 | 159.90 | 158.80 | 142.50 | 163.50 | 168.00 | 171.90 | 158.80 | 164.60 | 157.40 | 154.60 |
| ■ 2013 | 157.00 | 144.90 | 152.90 | 161.60 | 156.80 | 161.30 | 163.90 | 164.80 | 168.40 | 164.30 | 161.20 | 157.45 |
| ■ 2014 | 156.20 | 152.40 | 152.60 | 156.80 | 162.90 | 160.15 | 159.30 | 171.30 | 163.50 | 156.90 | 156.70 | |

South Bay Lower Well Static Water Levels



| | Jan | Feb | Mar | Apr | May | Jun | Jul | Aug | Sep | Oct | Nov | Dec |
|--------|--------|--------|--------|--------|--------|--------|--------|--------|--------|--------|--------|--------|
| ■ 2012 | 118.60 | 118.20 | 120.30 | 117.10 | 125.70 | 127.10 | 126.20 | 131.20 | 129.70 | 149.60 | 129.00 | 122.60 |
| ■ 2013 | 117.25 | 109.90 | 121.60 | 127.60 | 127.50 | 139.00 | 108.60 | | | | | |
| ■ 2014 | 122.10 | 118.90 | 116.80 | 112.90 | 126.00 | 128.50 | 129.30 | 125.60 | | 121.40 | 116.20 | |