



October 21, 2014

TO: LOCSD Board of Directors
FROM: Margaret Falkner, Utility Compliance Technician III
SUBJECT: **Agenda Item 9B – 11/13/2014 Board Meeting**
Utilities Department Report for September 2014

President
Craig V. Baltimore

Vice President
R. Michael Wright

Directors
Leonard A. Moothart
Marshall E. Ochyalski
Jon-Erik G. Storm

General Manager
Kathy A. Kivley

District Accountant
Michael L. Doyel

Fire Chief
Robert Lewin

Battalion Chief
Phill Veneris

Mailing Address:
P.O. Box 6064
Los Osos, CA 93412

Offices:
2122 9th Street, Suite 102
Los Osos, CA 93402

Phone: 805/528-9370
FAX: 805/528-9377

WATER PRODUCTION

The total production for the month of **September 2014** was approximately **17.7 million gallons (MG)** this equates to an average daily demand of 588,900 gallons. This represents a **decrease** in production from last year by approximately **17%**.

Fifty-seven percent of the service area received bills for approximately **19.8 MG** consumption for the period **August 8, 2014 through October 13, 2014**. This generated **\$182,464** in revenue. This represents approximately an **11%** decrease in consumption and approximately **3%** decrease in revenue when compared to last year at this time.

PRODUCTION AND RUNTIME HOURS BY WELL SITE

Below are two tables that break down the production by well site and the runtime on the pump motor for the month of September 2014. Last year's totals are included for comparison:

Production (MG) August	2014	2013
Palisades	8.8860	8.2670
3rd Street	2.9888	3.0897
El Moro	0.5067	5.4423
10th Street	5.2826	4.5805
South Bay (lower)	0.0026	0.0000
South Bay (upper)	0.0013	0.0000
TOTAL:	17.6680	21.3795

Runtime (Hours) September	2014	2013
Palisades	273.0	244.3
3rd St	676.0	710.3
El Moro	23.9	255.4
10th St	291.1	248.8
South Bay (lower)	0.3	0.0
South Bay (upper)	0.0	0.0
TOTAL:	1264.3	1458.8

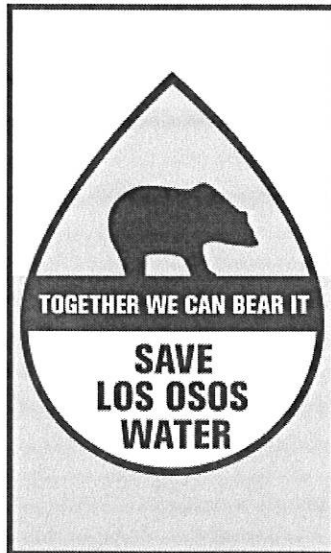
Please refer to the attached September 2014 "Well Log Summary" for more data regarding production, runtime hours, chemical usage, soundings, and alarms.

CALIFORNIA STATE OF EMERGENCY DUE TO DROUGHT

On January 17, 2014, Governor Brown declared an emergency due to drought. He has called on all Californians to restrain water use. Attached to this report are graphs with tables which provide information on the District's water well depths. We are officially still in a drought.

WATER CONSERVATION

Barnett, Cox and Associates have been busy preparing billing inserts, flyers, banners, and more for the District's water conservation efforts. A new water conservation logo is being used to promote the message from the District. Attached is a copy of one of these messages. Look for this brand which is synonymous with water conservation for Los Osos:



Staff attended the Farmers Market on Monday, October 20, 2014, distributing water conservation materials and fixtures to the public. A water conservation banner is being displayed on the northwest corner of Los Olivos Avenue and South Bay Boulevard. Messages continue to be displayed on the Rotary sign at the corner of Los Osos Valley Road and South Bay Boulevard.

More information is available at: <http://www.losososcscsd.org/cm/utilities/water-conservation.html>

SAN LUIS OBISPO COUNTY WATER CONSERVATION REBATE PROGRAM

All Los Osos residents that will be connected to the Los Osos Wastewater Project may qualify for rebates on plumbing fixtures. The District web site has a link to the County's rebate web site in more than one location on our web site.

Here is a link to the County's web site which has a lot of information for residents in the prohibition zone. <http://conservelososos.org/>

UTILITIES DEPARTMENT OPERATIONS AND MAINTENANCE FOR WATER SYSTEM

During the month of September 2014, crew provided weekly water sampling for water permit compliance, read water meters for billing, and performed monthly well soundings. They continued work on the meter replacement program, and fire hydrant maintenance. They also assisted consultants and contractors with projects and repairs.

Staff submitted the monthly monitoring report to the State Water Resource Control Board Drinking Water Division for September 2014 with no violations noted.

SAN LUIS OBISPO COUNTY ENERGY WATCH PROGRAM

In late April 2014, the District was contacted by County Planning staff regarding the Energy Watch Program. They were introducing an Energy Challenge program to Community Services Districts to find ways to reduce energy use at our facilities. This County program is provided in cooperation with PG&E and Southern California Gas Company. Our General Manager granted permission to access bills for District facilities.

As reported in the July 2014 Utilities Department Report we were able to switch to better rates at several of our facilities providing an estimated annual savings of \$4,742.83. The majority of the savings are in the water fund. In September 2014 another meeting took place between the County, PG&E, and District staff. At that meeting more information was provided to the County staff regarding projects the water department has in the near future.

The findings are that the District is eligible for a few programs. We have submitted the paperwork for a Large Integrated Audit (LIA) with PG&E. Staff notified the District Engineer to share the baseline report and that we've begun the process for the LIA. We will be contacted sometime in the future. Attached is a copy of the report provided to the District on September 10, 2014.

Additionally, the County of San Luis Obispo is a participant in a tri-county program called "emPower" to help residents in the tri-county region upgrade their single-family homes to be more energy efficient. Brochures are available in the District office and are provided for the Board members tonight. More information for the public is available at <http://www.empowersbc.org/home>

DRAINAGE WDID # 3 40M2000133

The District complies with the General National Pollutant Discharge Elimination System (NPDES) Permit for storm water discharges for small Municipal Separate Storm Sewer Systems (MS4). Under the new permit, all Community Services Districts are considered "Non-traditional" MS4s. Our annual report under the new permit was submitted to the state electronically on October 8, 2014 which covers the fiscal year July 2013 through June 2014.

2014 COASTAL CLEANUP DAY

At the July 2014 meeting, your Board approved a donation to the Environmental Center of San Luis Obispo (ECO SLO) for the annual Coastal Cleanup. The 2014 Coastal Cleanup Day was held on September 20, 2014. Attached is a Certificate of Appreciation and a letter of gratitude. Here are some statistics from the Central Coast preliminary data:

- 1,129 Volunteers
- 3,685.2 pounds of Trash and Recyclables Collected
- 56.25 miles of Coastline/Waterways Cleaned

Site for more information: <http://www.ecoslo.org/9-uncategorised/223-coastal-cleanup-2014>

BAYRIDGE ESTATES WDID# 3 401027001

Crews continue monitoring and groundskeeping. A eucalyptus tree had to be pruned for safety reasons on our property near the Daisy Hills Mobile Home Park.

Once connected to the Los Osos Wastewater Project, the District crews will no longer maintain the septic system.

VISTA DE ORO WDID# 3 401024001

Crews continue monitoring and groundskeeping. Once connected to the Los Osos Wastewater Project, the District crews will no longer maintain the septic system.

RECOMMENDATION

Staff encourages the Board to ask any questions they may have with regard to the aforementioned report or any other related item that may be listed separately as an agenda item.

Attachments

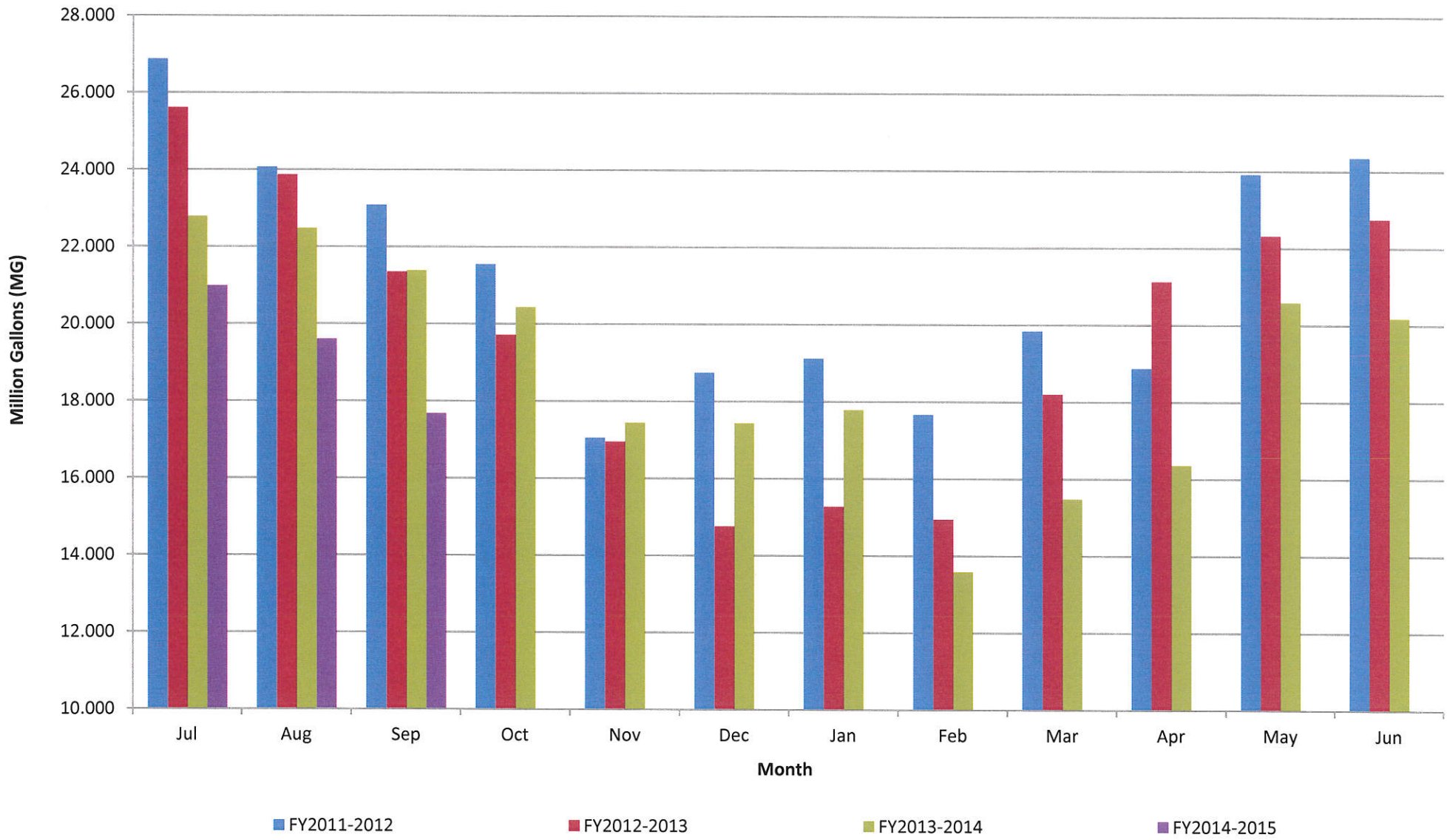
LOCSD Water Data

Water Production Data in Million Gallons

	FY 11-12	FY 12-13	FY 13-14	FY 14-15
Jul	26.868	25.600	22.779	20.979
Aug	24.064	23.862	22.470	19.593
Sep	23.086	21.340	21.380	17.668
Oct	21.543	19.708	20.431	
Nov	17.046	16.939	17.436	
Dec	18.745	14.747	17.431	
Jan	19.117	15.268	17.780	
Feb	17.662	14.940	13.584	
Mar	19.843	18.193	15.476	
Apr	18.873	21.118	16.354	
May	23.914	22.310	20.591	
Jun	24.347	22.743	20.179	
TOTAL	255.107	236.767	225.890	58.240

Consumption is billed for a two month period every month.
Revenue is based on gallons billed - not cash received.
Production is recorded daily.

Historical to Present LOCS D Well Production Data

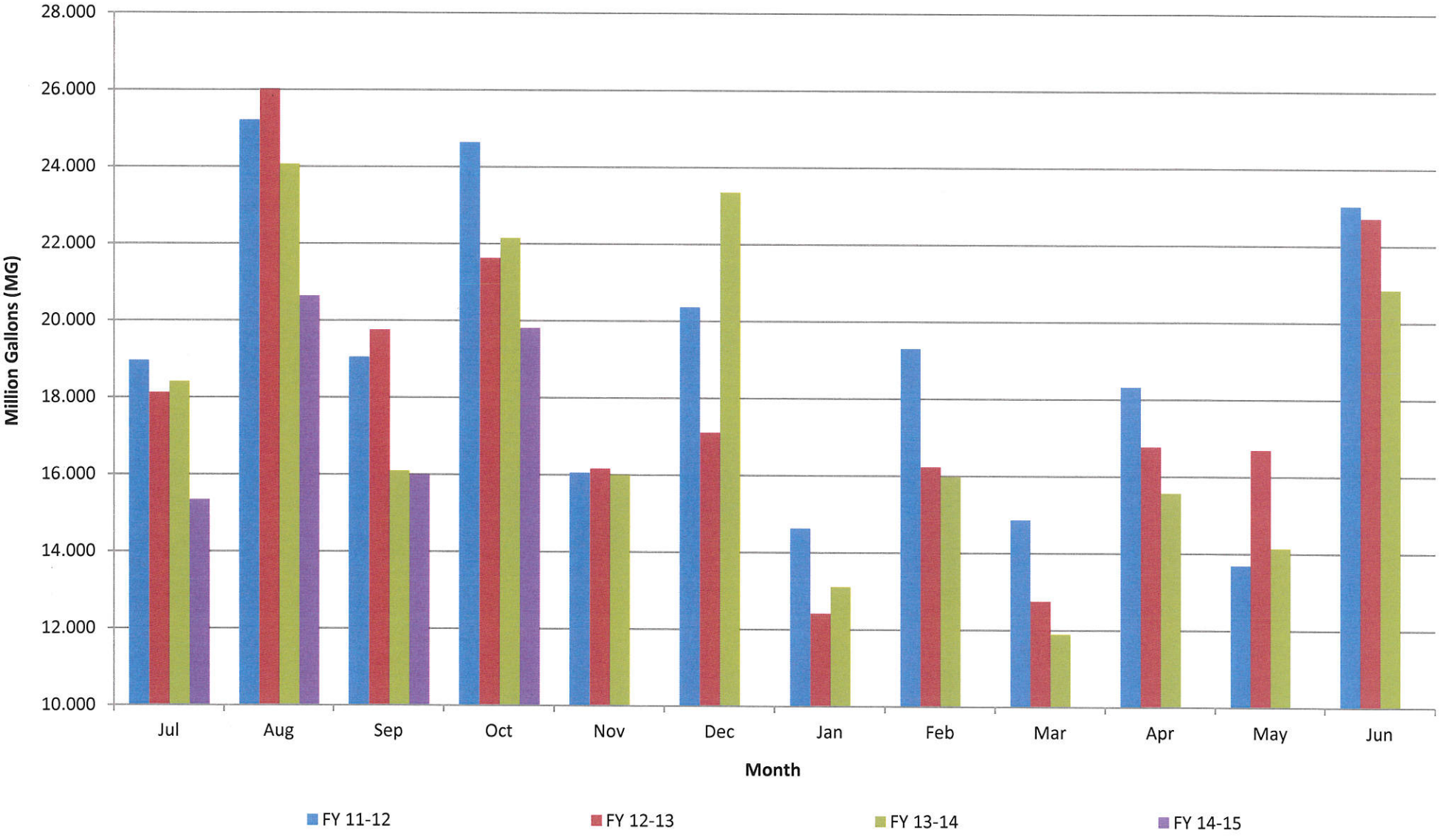


LOCSD Water Data

Water Consumption Data in Million Gallons						
% of Service Area	Billing Period		FY 11-12	FY 12-13	FY 13-14	FY 14-15
43	5/11 to 7/10	Jul	18.950	18.110	18.402	15.330
57	6/11 to 8/10	Aug	25.210	26.006	24.061	20.627
43	7/11 to 9/10	Sep	19.044	19.748	16.087	15.989
57	8/11 to 10/10	Oct	24.636	21.617	22.142	19.804
43	9/11 to 11/10	Nov	16.048	16.155	15.994	
57	10/11 to 12/10	Dec	20.355	17.096	23.342	
43	11/11 to 1/10	Jan	14.623	12.406	13.105	
57	12/11 to 2/10	Feb	19.294	16.223	15.969	
43	1/11 to 3/10	Mar	14.858	12.737	11.886	
57	2/11 to 4/10	Apr	18.313	16.756	15.559	
43	3/11 to 5/10	May	13.685	16.686	14.131	
57	4/11 to 6/10	Jun	23.029	22.709	20.852	
		TOTAL	228.044	216.249	211.530	71.750

Consumption is billed for a two month period every month.
 Revenue is based on gallons billed - not cash received.
 Production is recorded daily.

Historical to Present LOCSD Water Consumption

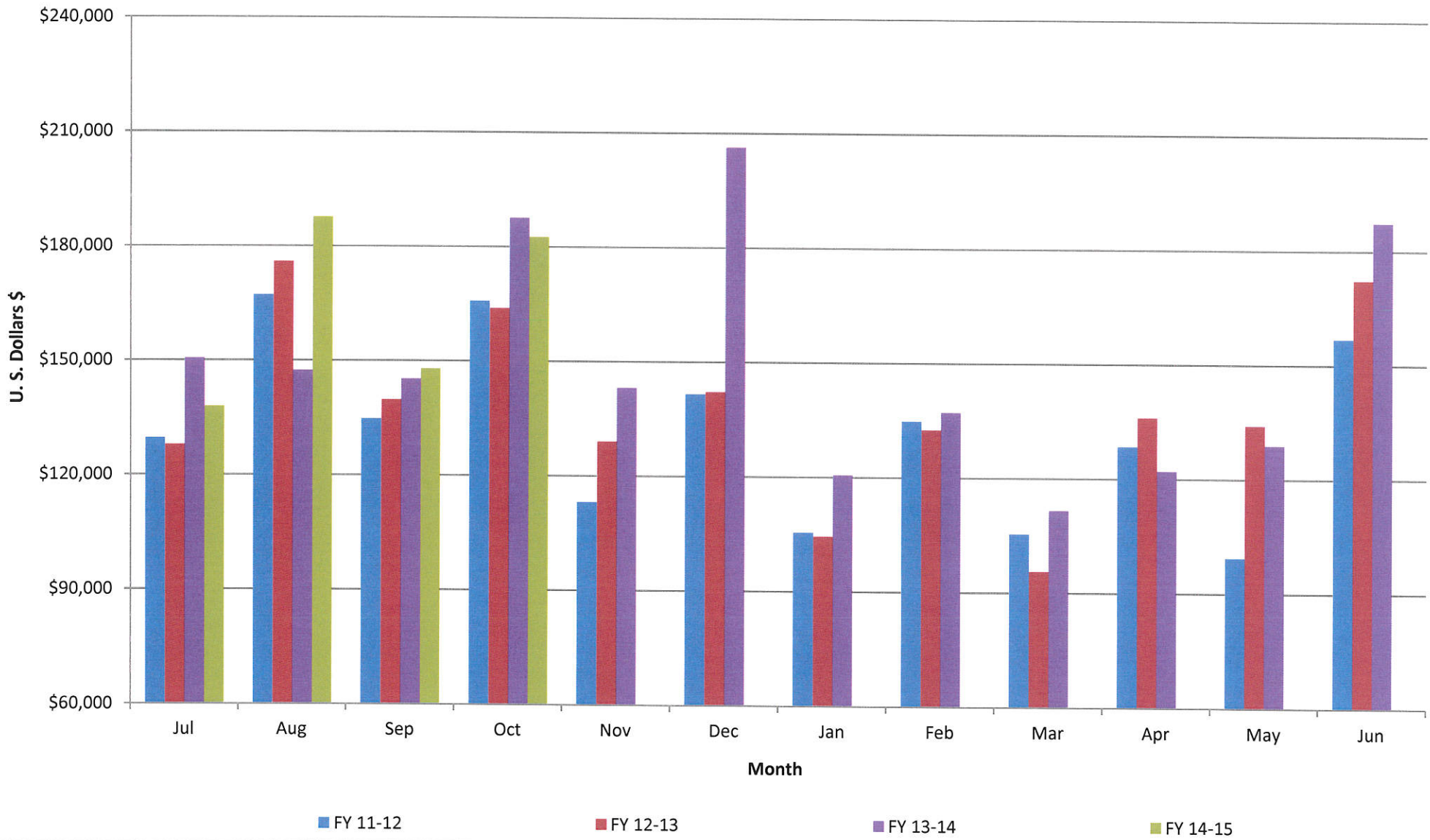


LOCSD Water Data

Water Revenue Data						
% of Service Area	Billing Period		FY 11-12	FY 12-13	FY 13-14	FY 14-15
43	5/11 to 7/10	Jul	\$129,524.46	\$127,737.70	\$150,401.90	\$137,752.98
57	6/11 to 8/10	Aug	\$167,062.07	\$175,798.70	\$147,246.54	\$187,468.02
43	7/11 to 9/10	Sep	\$134,650.62	\$139,628.43	\$145,135.28	\$147,808.06
57	8/11 to 10/10	Oct	\$165,624.63	\$163,698.98	\$187,431.78	\$182,463.96
43	9/11 to 11/10	Nov	\$113,044.46	\$128,918.55	\$143,029.03	
57	10/11 to 12/10	Dec	\$141,492.06	\$142,026.32	\$206,187.91	
43	11/11 to 1/10	Jan	\$105,371.44	\$104,328.08	\$120,500.40	
57	12/11 to 2/10	Feb	\$134,692.14	\$132,433.64	\$137,045.65	
43	1/11 to 3/10	Mar	\$105,313.67	\$95,487.96	\$111,475.31	
57	2/11 to 4/10	Apr	\$128,368.97	\$135,947.81	\$121,943.68	
43	3/11 to 5/10	May	\$99,287.66	\$133,939.00	\$128,784.61	
57	4/11 to 6/10	Jun	\$156,744.35	\$172,139.37	\$187,230.13	
		TOTAL	\$1,581,176.53	\$1,652,084.54	\$1,786,412.22	\$655,493.02

Consumption is billed for a two month period every month.
 Revenue is based on gallons billed - not cash received.
 Production is recorded daily.

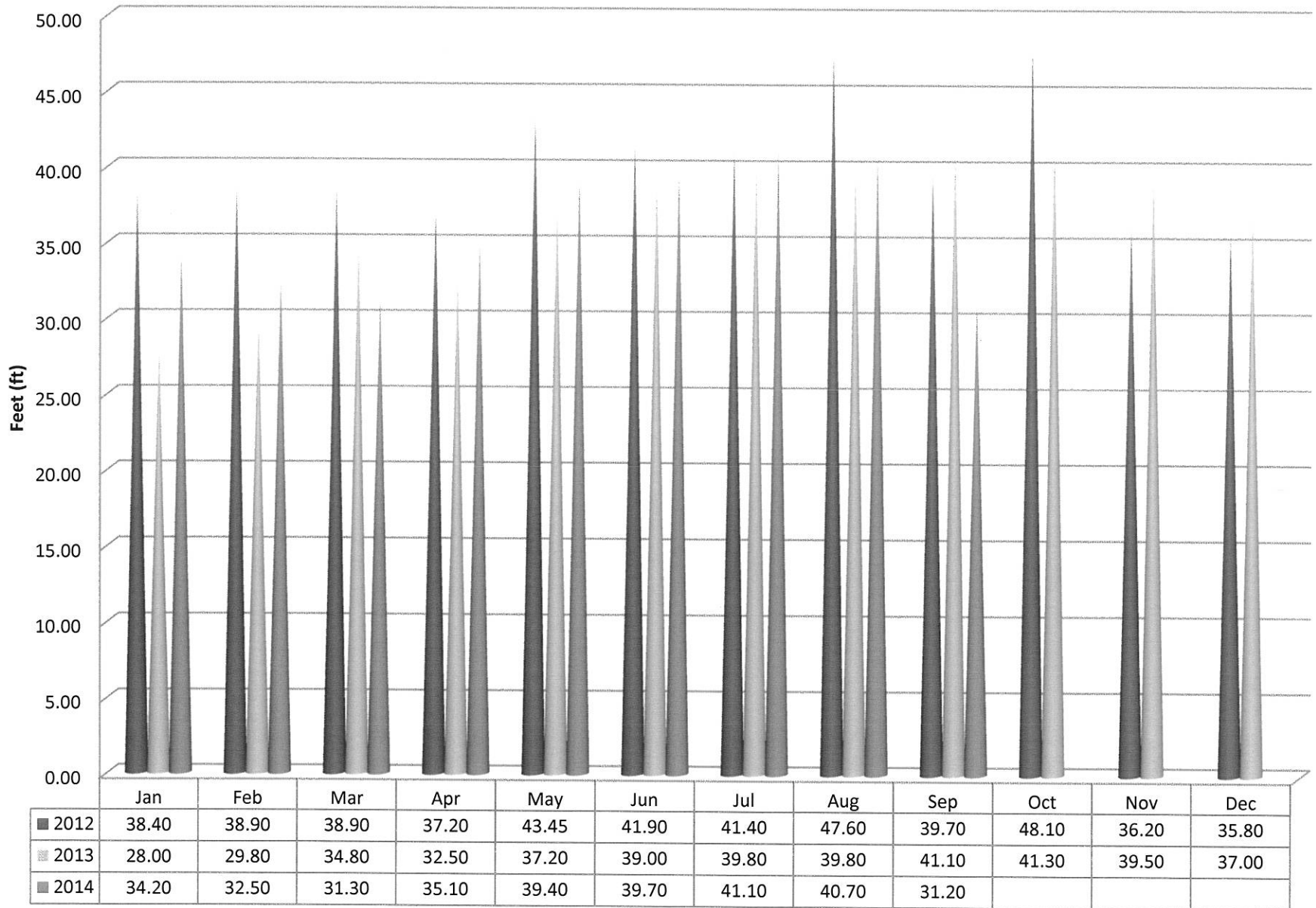
Historical to Present LOCSD Water Revenue



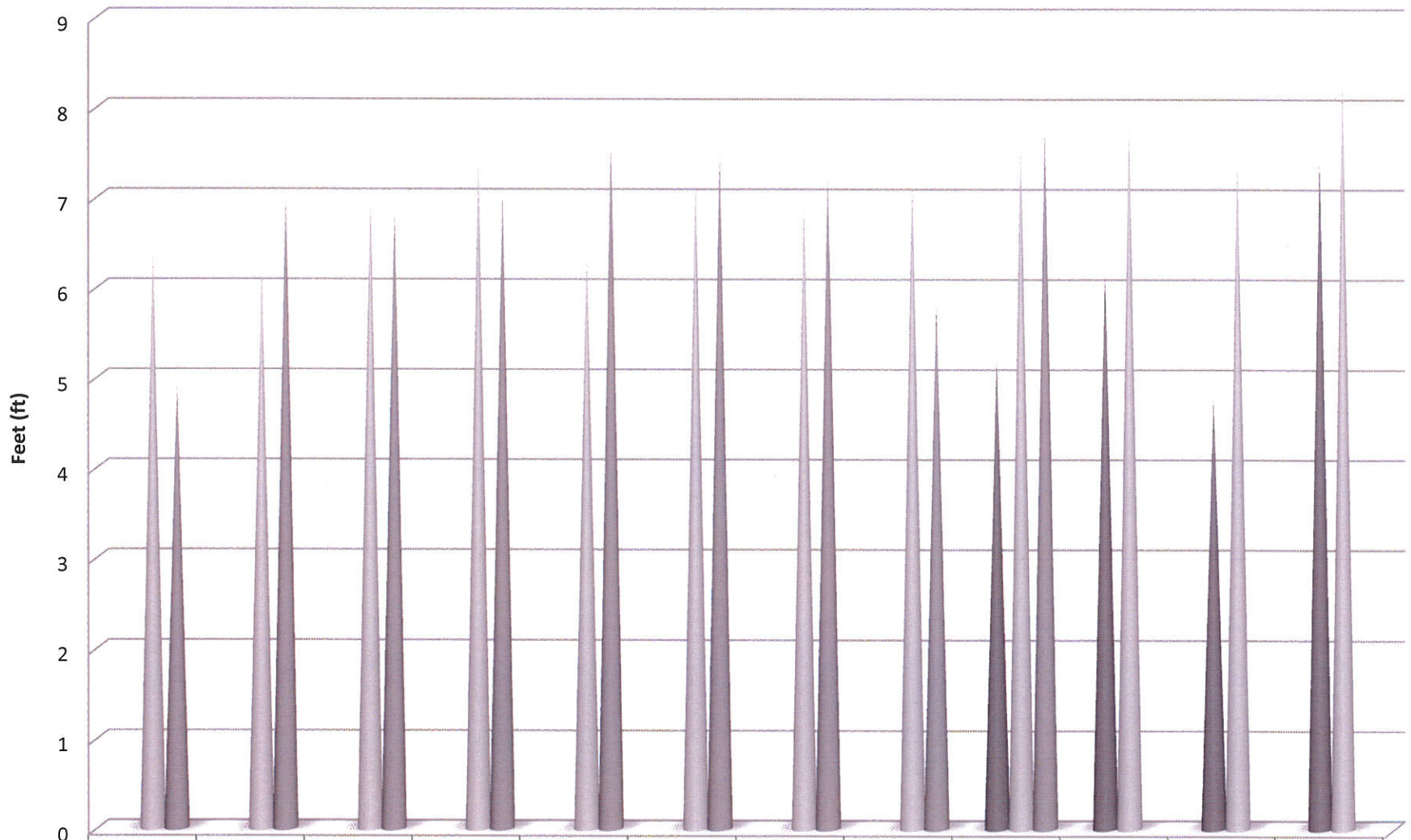
SEPTEMBER 2014	8th St./ EI Moro Well	3rd St./ Bayside Well	10th St. Well	South Bay Well	South Bay Upper Well	Palisades Well	All Wells TOTAL	Last Years TOTAL	Percent% Differential
Total Gallons Produced, Mgal	0.5067	2.9888	5.2826	0.0026	0.0013	8.8860	17.6680	21.3795	-17.36%
Average Daily Flow, Mgal							0.5889		
Total Gallons to Waste (<i>Filter Backwash</i>), Mgal	0.0236			0.0000	0.0000		0.0236	0.0000	
Total Gallons to Waste (<i>System Flushing</i>), Mgal							0.0000	0.0000	
Distribution System Losses (<i>Water Line Breaks</i>), Mgal							0.0000	0.0015	
Total Gallons Adjusted, Mgal	0.4831			0.0026			17.6444	21.378	-17.46%
Pump Runtime, total hours	23.9	676.0	291.1	0.3	0.0	273.0	1264.3	1458.8	-15.38%
Daily Avg. Runtime, hours/day	0.8	22.5	9.7	0.0	0.0	9.1			
Energy Used, kWatts	1036	5377	11969	132	132	20784	39430	45653	-13.63%
Eff. Ratio, kWatts/hr	43.35	7.95	41.12	440.00	0.00	76.13			
Chlorine Used, total gallons	8.6	42.2	30.4	0.0		71.2	81.2	139.8	-41.94%
Aqua Mag, pounds	8.4		67.0	0.0		67.4	142.8	211	-32.32%
Static water level, ft.	31.20	7.80	163.50	0.00	0.00	114.80			
Pump water level, ft.	141.50	55.60	246.70	0.00	0.00	260.10	Both South Bay wells out of service.		
Draw-down level, ft.	110.30	47.80	83.20	0.00	0.00	145.30	8th Street back in service 9/24/2014		
Gallons per minute	352	72	305	0	0	545			
Pressure, psi	94	84	38	0	0	89			
Alarm Events									
YES / NO	YES	NO	YES	NO	NO	YES			
Type of event									
Well Failure							0		
Power Failure							0		
Low Chlorine	1					1	2		
Other:			1				1		
Total number alarms	1	0	1	0	0	1	3	7	-57.14%

Well Log Summaries

8th Street Well Static Water Levels

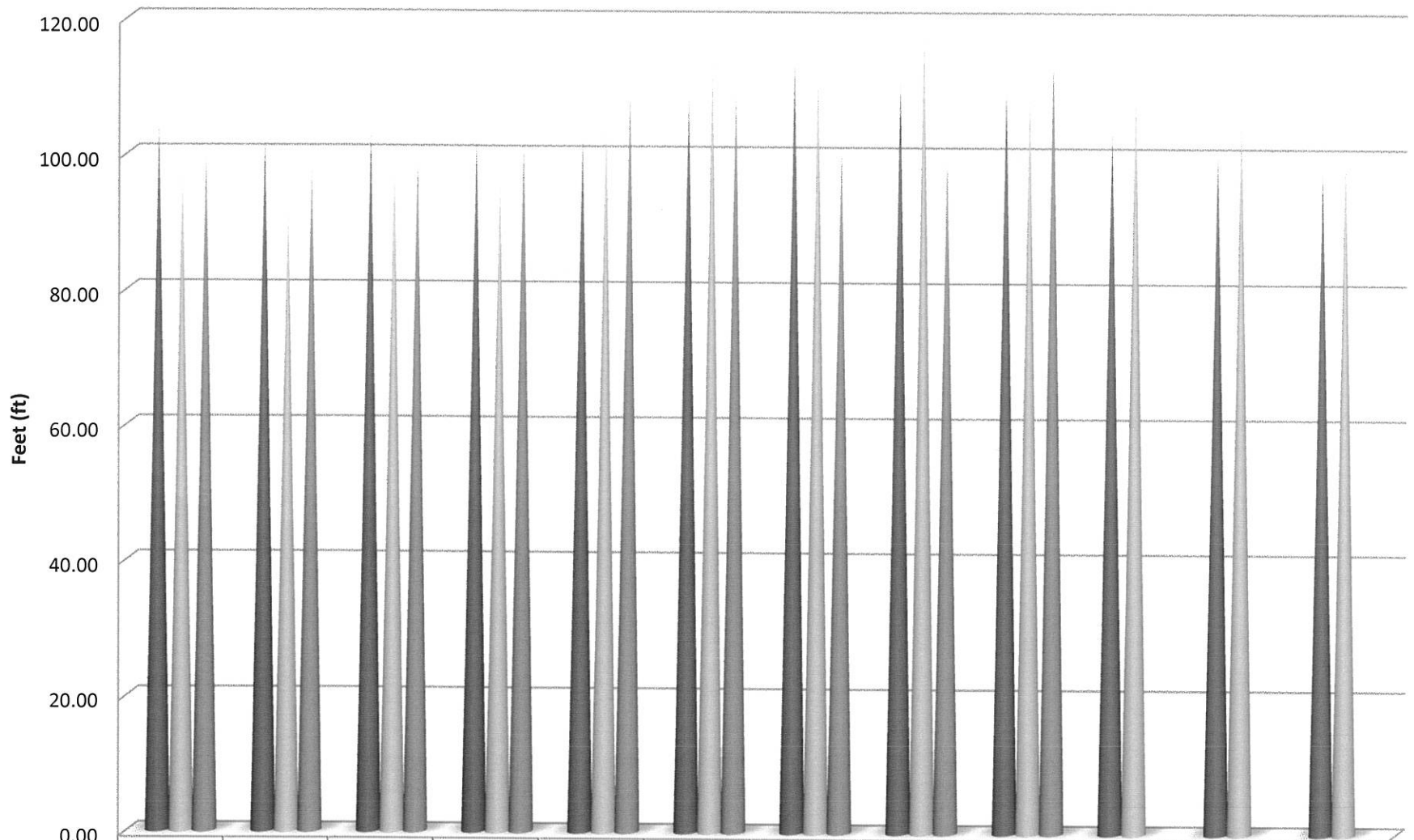


3rd Street Well Static Water Levels



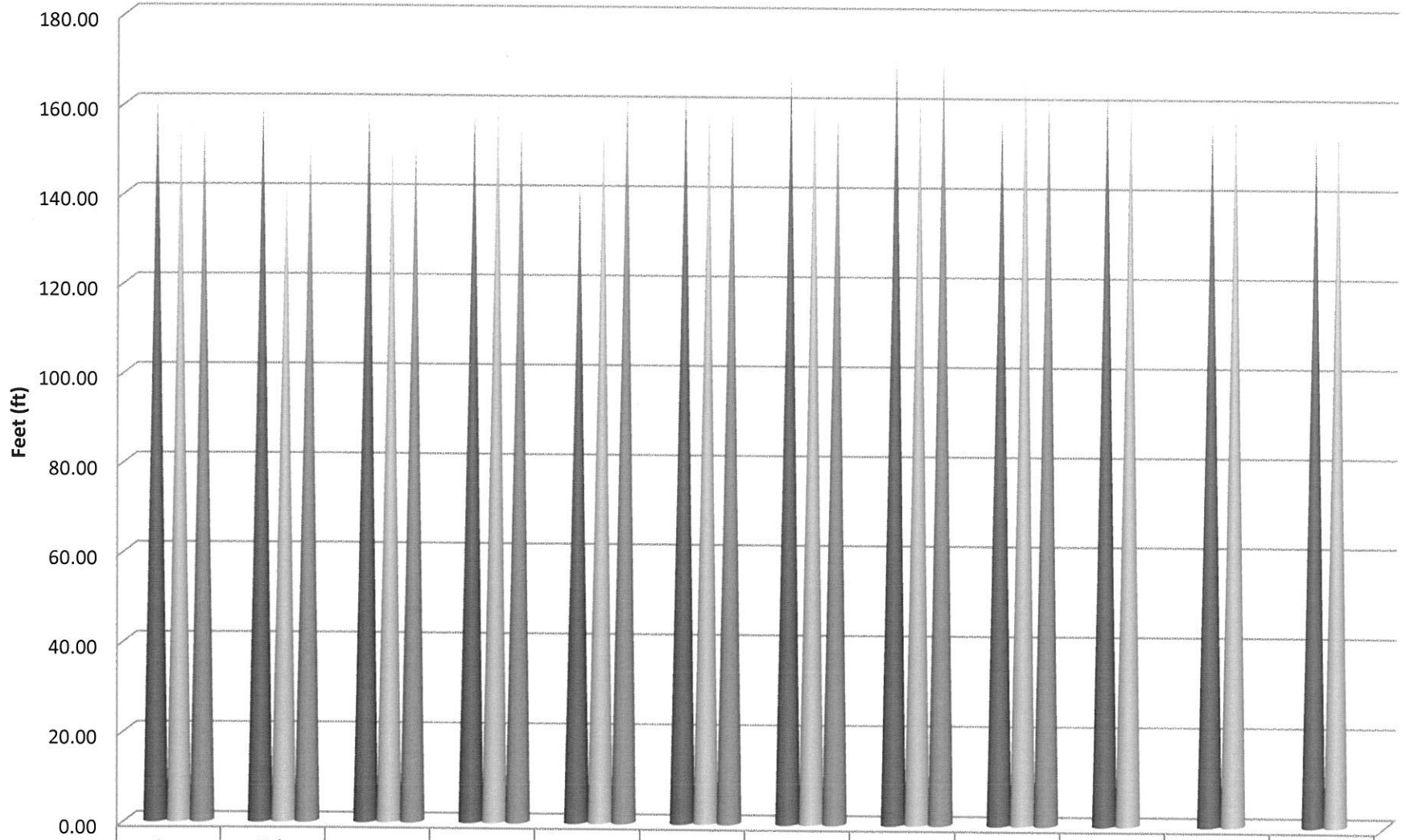
	Jan	Feb	Mar	Apr	May	Jun	Jul	Aug	Sep	Oct	Nov	Dec
2012									5.25	6.20	4.80	7.50
2013	6.50	6.30	7.10	7.50	6.50	7.30	7.00	7.30	7.70	7.90	7.50	8.45
2014	5.00	7.10	6.90	7.10	7.70	7.55	7.30	5.90	7.80			

Palisades Well Static Water Levels



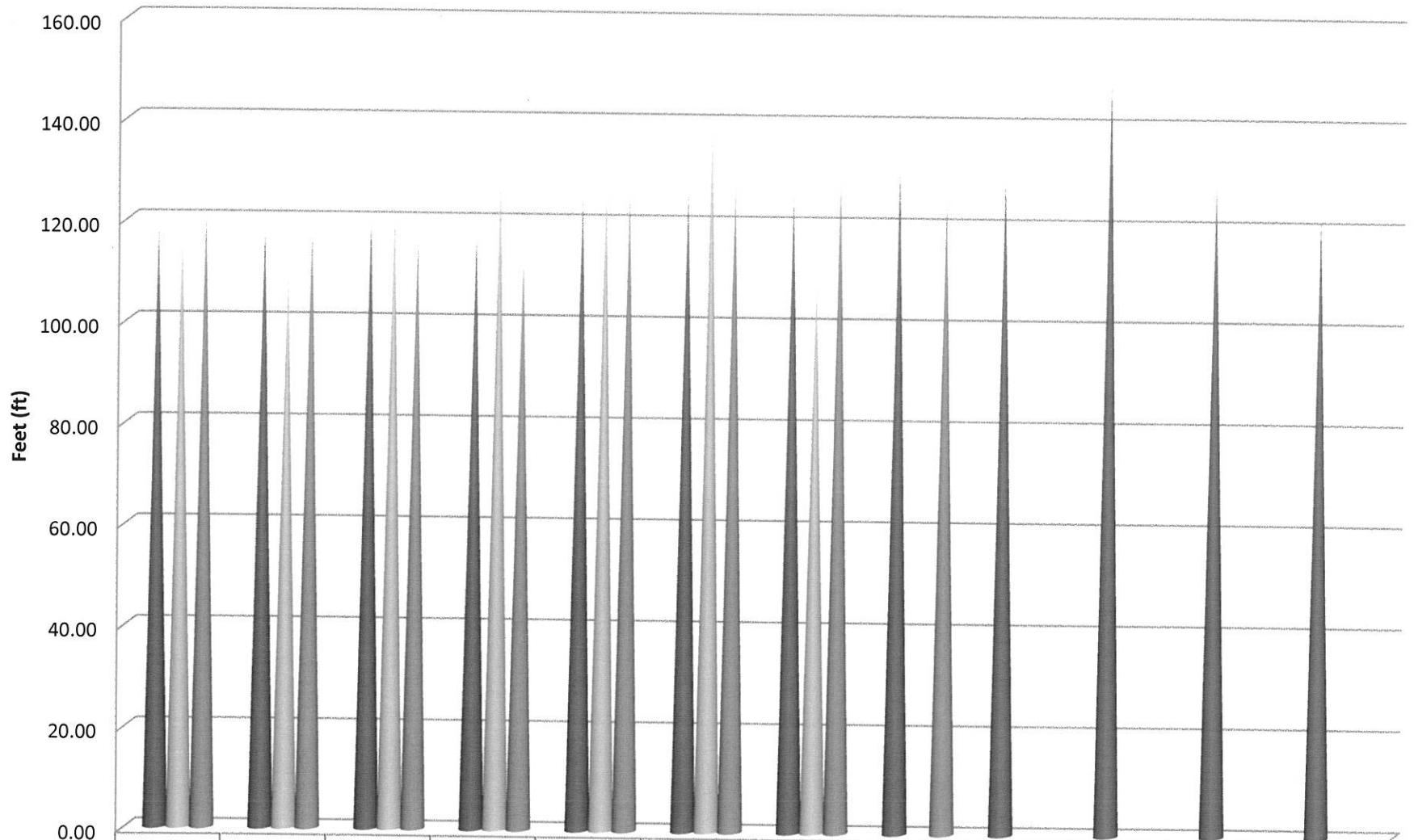
	Jan	Feb	Mar	Apr	May	Jun	Jul	Aug	Sep	Oct	Nov	Dec
2012	105.00	102.60	103.50	102.30	103.10	109.30	113.80	111.40	110.30	104.60	100.90	98.50
2013	97.20	92.30	97.90	96.20	104.90	113.60	112.60	118.70	109.80	109.90	106.50	101.35
2014	100.40	98.60	99.90	102.10	109.85	110.3	101.60	100.05	114.80			

10th Street Well Static Water Levels



	Jan	Feb	Mar	Apr	May	Jun	Jul	Aug	Sep	Oct	Nov	Dec
2012	162.85	160.60	159.90	158.80	142.50	163.50	168.00	171.90	158.80	164.60	157.40	154.60
2013	157.00	144.90	152.90	161.60	156.80	161.30	163.90	164.80	168.40	164.30	161.20	157.45
2014	156.20	152.40	152.60	156.80	162.90	160.15	159.30	171.30	163.50			

South Bay Lower Well Static Water Levels



	Jan	Feb	Mar	Apr	May	Jun	Jul	Aug	Sep	Oct	Nov	Dec
■ 2012	118.60	118.20	120.30	117.10	125.70	127.10	126.20	131.20	129.70	149.60	129.00	122.60
■ 2013	117.25	109.90	121.60	127.60	127.50	139.00	108.60					
■ 2014	122.10	118.90	116.80	112.90	126.00	128.50	129.30	125.60				

Badge of Honor

**Conserve Los Osos Water.
It's not an option anymore.**



Los Osos Community Services District • (805) 528-9370 • www.losososcsd.org



LOS OSOS WATER CONSERVATION REBATE PROGRAM

RETROFIT NOW BEFORE REBATES ARE REDUCED.

- Rebates can cover the full cost of toilets, showerheads and aerators, including installation.
- Low-flow fixtures are required before connecting to the new sewer system.
- Rebate amounts go down after 2014. **Don't wait!**

FOR MORE INFORMATION, VISIT:

www.slocounty.ca.gov/pw/lowwp

FOR QUESTIONS OR INSPECTIONS, CALL:

805-788-6633



**SAN LUIS OBISPO COUNTY
WATER CONSERVATION REBATE PROGRAM FOR LOS OSOS**

REQUIRED RETROFITS ELIGIBLE FOR REBATES

Fixture or Appliance	Existing Fixture Flow Rate	New Fixture Flow Rate Eligible for Rebate	2014	Subsequent Years
			Rebate per Fixture Installation	Rebate per Fixture
Toilets – Residential and Commercial	Greater than 1.6 gpf	1.28 gpf or less	\$250	\$160
Showerheads – Residential and Commercial	Greater than 2.0 gpm	1.5 gpm or less	\$40	\$30
Faucet Aerators – Residential	Greater than 1.5 gpm	1.5 gpm or less	\$5	\$5
Faucet Aerators – Commercial	Greater than 0.5 gpm	0.5 gpm	\$5	\$5
Urinals – Commercial	Greater than 1.0 gpf	0.5 gpf or less	\$500	\$250
Pre-rinse Spray Valves – Commercial	Greater than 1.15 gpm	1.15 gpm or less	N/A	N/A

OPTIONAL RETROFITS ELIGIBLE FOR REBATES

Toilets – Residential & Commercial	Equal to 1.6 gpf	1.0 gpf or less	\$250	\$160
Washers – Residential & Commercial	Less than Tier 3 Less than Water Factor 4	Tier 3, Water Factor 4	\$150	\$150
Alternative Measures ¹	1.28 gpf toilet 1.5 gpm showerhead 1.5 gpm faucet aerators	needs prior approval	\$300	\$300

CSD ENERGY MANAGEMENT

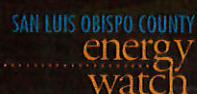
The County of San Luis Obispo's Energy Watch works closely with local governments to identify opportunities for energy and cost savings, finance and implement projects, and track building performance.



For more information,
please call (805) 781-5623 or email energy@co.slo.ca.us

San Luis Obispo County's Energy Watch is a partnership between the County of San Luis Obispo, the Economic Vitality Corporation, Pacific Gas and Electric Company (PG&E), Southern California Gas Company (SoCal Gas), and participating cities and Community Service Districts (CSD).

This program is funded by California utility customers and administered by PG&E and SoCal Gas under the auspices of the California Public Utility Commission.





**Los Osos Community Service District
Energy Baseline Report**

September 10, 2014

I. Introduction

San Luis Obispo County's Energy Watch (Energy Watch) is a partnership between the County of San Luis Obispo, the Economic Vitality Corporation, Pacific Gas and Electric Company (PG&E), Southern California Gas Company (SoCal Gas), and participating cities and Community Service Districts (CSD). As part of a comprehensive program, Energy Watch provides information to local governments regarding energy use and costs in their building facilities and infrastructure. This information is used to identify opportunities for energy and cost savings, to help participants finance and implement energy saving measures and projects, and to track building performance.

The dual purpose of this report is to (1) describe and compare Los Osos CSD's energy use and costs in 2012 and 2013, and to (2) serve as a baseline and guiding document for future energy efficiency efforts. Los Osos CSD authorized Energy Watch to collect utility data from PG&E and SoCal Gas to produce this report. The Environmental Protection Agency's Energy Star Portfolio Manager, a free online benchmarking tool was used, in part, to track and monitor energy use and cost, as well as building performance in facilities over time.

II. Energy Cost Analysis

Los Osos CSD is comprised of three buildings and 11 types of utility infrastructure. The energy cost analysis below describes the electricity and gas costs for each property type, as well as the percent change between 2012 and 2013. It also highlights the properties with the highest energy costs and greatest increase between years as a means to determine potential opportunities for future energy and cost savings.

Buildings

The following table depicts the electricity and gas costs for Los Osos CSD buildings in 2012 and 2013, as well as the percent change between the two years. Please note that the LOCSO Office is the only building that does not use gas.

Table 1.1 Building Electricity and Gas Costs, 2012 and 2013

Facility Name	Electricity Cost (\$) 2012	Electricity Cost (\$) 2013	Electricity % Change '12 - '13	Gas Cost (\$) 2012	Gas Cost (\$) 2013	Gas % Change '12 - '13
CAL FIRE STATION 15	\$ 4,013	\$ 4,240	↑6%	\$ 933	\$ 995	↑7%
WATER OPERATIONS OFFICE	\$ 1,030	\$ 941	↓9%	\$ 305	\$ 215	↓30%
LOCSO OFFICE	\$ 294	\$ 156	↓47%	-	-	-
TOTAL	\$ 5,337	\$ 5,337	0%	\$ 1,238	\$ 1,210	↓2%

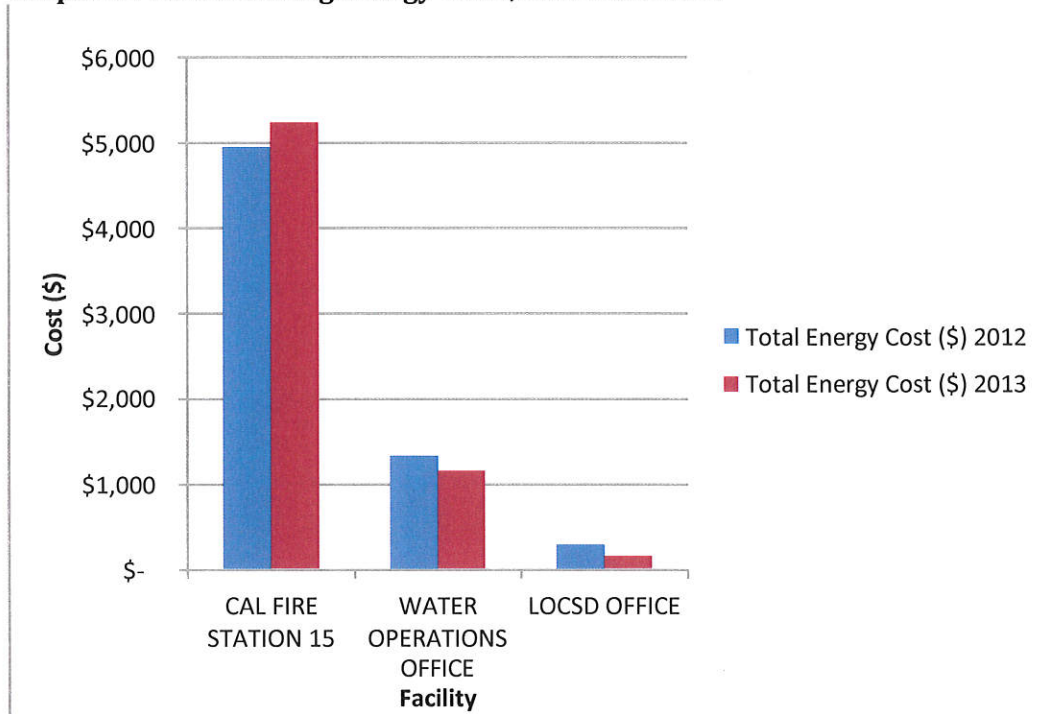
See Appendix A - Facility Information for account details

As shown in the table above, electricity costs for the Cal Fire Station Building increased 6% and gas costs increased 7% between 2012 and 2013, respectively. Therefore, opportunities for energy and

cost savings may exist in this building facility and it is recommended that an energy assessment of this building be performed.

The following graph compares total energy costs for Los Osos CSD buildings between 2012 and 2013.

Graph 1.1 Total Building Energy Costs, 2012 and 2013



As shown in the graph above, the Cal Fire Station has the highest energy cost amongst Los Osos CSD buildings in 2012 and 2013. Therefore, this building facility may be an important focus of future energy use and cost reduction efforts, including an energy assessment.

Utility Infrastructure

The following table depicts the electricity and gas costs for all Los Osos CSD utility infrastructures in 2012 and 2013, as well as the percent change between the two years. Please note that the utility infrastructures included in this report only use electricity.

Table 2.1 Utility Infrastructure Electricity and Gas Costs, 2012 and 2013

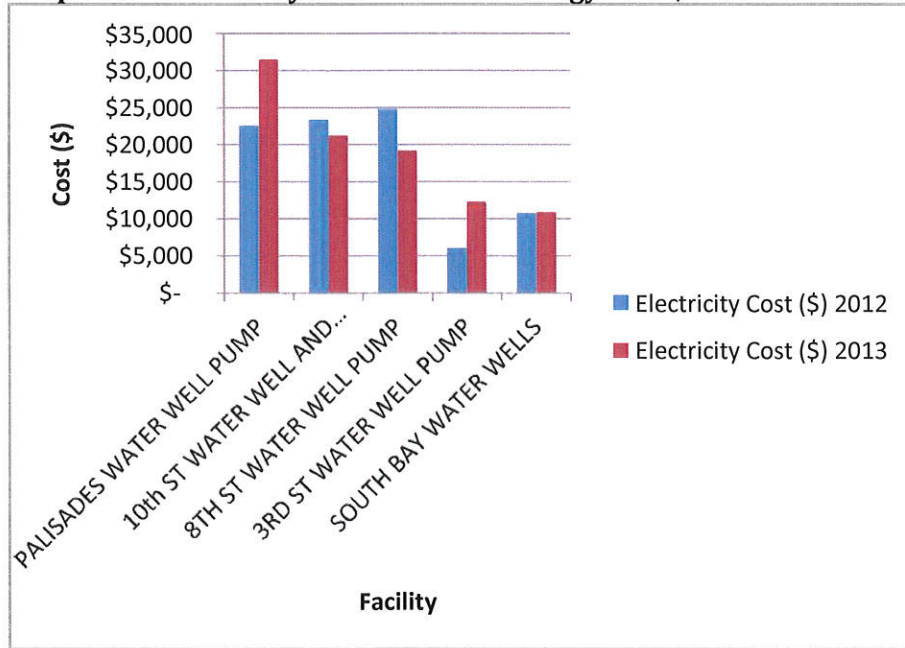
Facility Name	Electricity Cost (\$) 2012	Electricity Cost (\$) 2013	Electricity % Change '12-'13
PALISADES WATER WELL PUMP	\$ 22,606	\$ 31,485	↑39%
10th ST WATER WELL AND TANK	\$ 23,365	\$ 21,244	↓9%
8TH ST WATER WELL PUMP	\$ 24,813	\$ 19,189	↓23%
3RD ST WATER WELL PUMP	\$ 6,027	\$ 12,299	↑104%
SOUTH BAY WATER WELLS	\$ 10,798	\$ 10,898	↑ 1%
TOTAL	\$ 87,609	\$ 95,116	↑9%

See Appendix A - Facility Information for account details

As shown in the table above, electricity costs for the Palisades Water Well Pump increased 39% and the 3rd Street Water Well Pump increased 104% between 2012 and 2013. Therefore, opportunities for energy and cost savings may exist in this utility infrastructure, and it is recommended that an energy assessment of this infrastructure be performed.

The following graph compares total energy costs for Los Osos CSD utility infrastructures between 2012 and 2013.

Graph 2.1 Total Utility Infrastructure Energy Costs, 2012 and 2013



As shown in the graph above, Palisades Water Well Pump has the highest energy cost amongst Los Osos CSD utility infrastructure in 2013. Therefore, this utility infrastructure may be an important focus of future energy and cost reduction efforts, including an energy assessment.

III. Next Steps in Your Energy Action Plan

Perform On-Site Energy Assessment

Energy Watch will work with Los Osos CSD to coordinate an energy assessment and generate a report identifying the best opportunities for energy and cost savings, as well as the information necessary for financing and moving forward with project implementation.

Select and Finance Projects

Energy Watch will work with Los Osos CSD to select projects, help create project operations plans including estimated costs, determine incentive levels, and set up on-bill financing (if requested).

Implement Projects

Energy Watch will work with Los Osos CSD to select contractors, conduct post-retrofit tests, and make sure that incentives and financing are in place.

Monitor and Measure

Energy Watch will assess energy use and costs on a regular basis and provide the Los Osos CSD with an annual *Energy Report* and *Rate Analysis*.

IV. Program Information

Additional Services

Training

Energy Watch can train CSD staff to use the resources to easily track and measure their energy use, costs, and performance over time.

Community Outreach

Energy Watch can help Los Osos CSD promote a variety of energy efficiency programs to homeowners and businesses.

Strategic Planning

Energy Watch can help Los Osos CSD develop a customized, *5 Year Energy Strategy and Management Plan* for future energy efficiency facility and infrastructure improvements including their funding and financing.

Contact Information

Callie Lewis, Energy Program Associate clewis@co.slo.ca.us
805.781.5623

Appendix A - Facility Information

Electricity Account Details					
Facility Name	Address	Customer #	Service #	Meter #	Property Floor Area (ft ²)
Buildings					
LOCSD OFFICE	2122 9TH ST STE 202	██████████	██████████	██████████	400
WATER OPERATIONS OFFICE	953 EL MORO AVE	██████████	██████████	██████████	800
CAL FIRE STATION 15	2315 BAYVIEW HEIGHTS DR	██████████	██████████	██████████	7,747
Utility Infrastructure					
BAYRIDGE W.W, HANDLING FACILITY	1320 BAY OAKS DR	██████████	██████████	██████████	-
SOUTH BAY WATER WELLS	1413 NIPOMO AVE	██████████	██████████	██████████	-
DRAINAGE PUMP	16TH & PASO ROBLES	██████████	██████████	██████████	-
WATER WELL PUMP	2079 PALISADES AVE	██████████	██████████	██████████	-
3RD ST WATER WELL PUMP	1445 3RD STREET	██████████	██████████	██████████	-
DRAINAGE PUMPS 6th and Morro	6TH and EL MORRO ST	██████████	██████████	██████████	-
8TH ST WATER WELL PUMP	8TH ST and EL MORRO AVE	██████████	██████████	██████████	-
DON MITCHELL DRAINAGE PUMP	DON and MITCHELL	██████████	██████████	██████████	-
MORO and 8TH DRAINAGE PUMP	EL MORO AVE and 8TH ST	██████████	██████████	██████████	-
10th ST WATER WELL AND TANK	2103 10TH ST	██████████	██████████	██████████	-
VISTA DE ORO SEPTIC SYSTEM	VISTA DE ORO LEACHFLD	██████████	██████████	██████████	-

Gas Account Details				
Facility Name	Service Address	Service Account	Meter Number	Property Floor Area (ft ²)
Buildings				
WATER OPERATIONS OFFICE	953 EL MORO AVENUE	██████████	██████████	800
CAL FIRE STATION 15	2315 BAYVIEW HEIGHTS DRIVE	██████████	██████████	7,747



September 24, 2014

Los Osos Community Services District
Margaret Falkner
P.O. Box 6064
Los Osos, CA 93412

Dear Margaret,

Thank you *so much* for your recent donation of \$250 in support of the 2014 Coastal Cleanup Day! On September 20th, over 1,100 volunteers helped to remove over 3,600 pounds of trash and recyclables from 56 miles of coast and shorelines, at 27 sites across San Luis Obispo County. This year, Coastal Cleanup Day expanded inland to include Lopez Lake, and beaches were cleaned from San Simeon south to Oceano Dunes.

In addition to cleaning up our shorelines, the event served to help educate the public on the scope of the problem and the importance of keeping our oceans clean. It also generated great publicity for our event sponsors, like you, with coverage on local radio and television stations, as well as articles and advertisements in virtually every paper in the county.

Thank you once again for supporting our efforts to make Coastal Cleanup Day 2014 a success.

Sincerely,

A handwritten signature in black ink, consisting of a large, stylized 'A' followed by several loops and a long horizontal line extending to the right.

Adria Arko
Coastal Cleanup Day County Coordinator

Certificate of Appreciation

With deep gratitude, this certificate recognizes the sponsorship of:

Los Osos Community Service District

Thank you for your committed support and dedication to the
30th annual *Coastal Cleanup Day 2014*.

Your participation with the Environmental Center of
San Luis Obispo has helped save our shorelines!



Sandra Marshall

Sandra Marshall
ECOSLO Board Chair

Krista Burke

Krista Burke
CCD County Coordinator