



April 24, 2014

TO: LOCSD Board of Directors
FROM: Margaret Falkner, Utility Compliance Technician III
SUBJECT: **Agenda Item 9B – 05/01/2014 Board Meeting**
Utilities Department Report for March 2014

M&F

President
Craig V. Baltimore

Vice President
R. Michael Wright

Directors
Leonard A. Moothart
Marshall E. Ochylski

General Manager
Kathy Kivley

Interim District Accountant
Dale Flynn

Fire Chief
Robert Lewin

Battalion Chief
Phill Veneris

WATER PRODUCTION

The total production for the month of **March 2014** was approximately **15.5 million gallons (MG)** this equates to an average daily demand of 499,200 gallons. This represents a **decrease** in production from last year by approximately **15%**.

Fifty-seven percent of the service area received bills for approximately **15.6 MG** consumption for the period **February 10, 2014 through April 10, 2014**. This generated **\$121,943** in revenue. This represents approximately **7%** decrease in consumption and **10%** decrease in revenue when compared to last year at this time.

PRODUCTION AND RUNTIME HOURS BY WELL SITE

Below are two tables that break down the production by well site and the runtime on the pump motor for the month of March 2014. Last year's totals are included for comparison:

Production (MG) March	2014	2013
Palisades	4.0630	5.3310
3rd Street	3.1542	3.0825
El Moro	3.3839	4.2018
10th Street	3.6912	3.1075
South Bay (lower)	1.1840	2.4697
South Bay (upper)	0.0000	0.0000
TOTAL:	15.4763	18.1925

Runtime (Hours) March	2014	2013
Palisades	117.1	114.2
3rd St	720.2	714.0
El Moro	156.1	198.8
10th St	193.2	162.4
South Bay (lower)	717.5	738.7
South Bay (upper)	0.0	0.0
TOTAL:	1904.1	1928.1

Mailing Address:
P.O. Box 6064
Los Osos, CA 93412

Offices:
2122 9th Street, Suite 102
Los Osos, CA 93402

Phone: 805/528-9370
FAX: 805/528-9377

www.locsd.org

Please refer to the attached March 2014 "Well Log Summary" for more data regarding production, runtime hours, chemical usage, soundings, and alarms.

CALIFORNIA STATE OF EMERGENCY DUE TO DROUGHT

On January 17, 2014, Governor Brown declared an emergency due to drought. He has called on all Californians to restrain water use. Attached to this report are graphs with tables which provide information on the District's water well depths.

UTILITIES DEPARTMENT OPERATIONS AND MAINTENANCE FOR WATER SYSTEM

During the month of March 2014, crew provided weekly water sampling for water permit compliance, read water meters for billing, and performed monthly well soundings. In addition to these duties, they upgraded service lines, changed out some old stuck meters, assisted contractor with planned shut-down, assisted contractor with a hydrant installation, and performed maintenance on the booster pumps and transfer pump. Staff submitted the monthly monitoring report to the California Department of Public Health (CDPH) for March 2014 with no violations noted.

WATER CONSERVATION

During the months of March and April staff ordered and received a new supply of Sammy Steelhead coloring books and activity guides for children from pre-school to highschool age. We restocked our supply of 1.5 gpm showerheads, 1.5 gpm kitchen faucet aerators, 1.0 gpm bathroom faucet aerators, and low flow hose nozzles. Staff ordered and received water conservation stickers for children, as well as "World of Water" activity books and pencils. All of the above listed items along with a water conservation fact sheet, water quality report, and a native plant gardening brochure were brought to Farmer's Market on Monday April 21st. All items were free to the public, who were encouraged by staff to conserve water. A new water conservation message was posted on Rotary's electronic message board at the intersection of South Bay Boulevard and Los Osos Valley Road. Water bills were printed with a message encouraging customers to come to the office and pick up free water saving fixtures. Staff created a new billing insert for the next two billing cycles containing water conservation facts.

DRAINAGE WIDID # 3 40M2000133

Crews performed maintenance on the drainage pump at 16th & Paso Robles Avenue. The District operations facility at 8th & El Moro recorded 1.38" of rain for the month of March. This brings the yearly total to 4.95". This is more rain than the crew measured for the entire 2013 calendar year. The General National Pollutant Discharge Elimination System (NPDES) Permit for storm water discharges for small Municipal Separate Storm Sewer Systems (MS4) is effective July 1, 2013. Our first annual report will be due in June 2014.

BAYRIDGE ESTATES WIDID# 3 401027001

Crews continue monitoring and groundskeeping. Once connected to the Los Osos Wastewater Project, the District crews will no longer maintain the septic system.

VISTA DE ORO WIDID# 3 401024001

Crews continue monitoring and groundskeeping. Once connected to the Los Osos Wastewater Project, the District crews will no longer maintain the septic system.

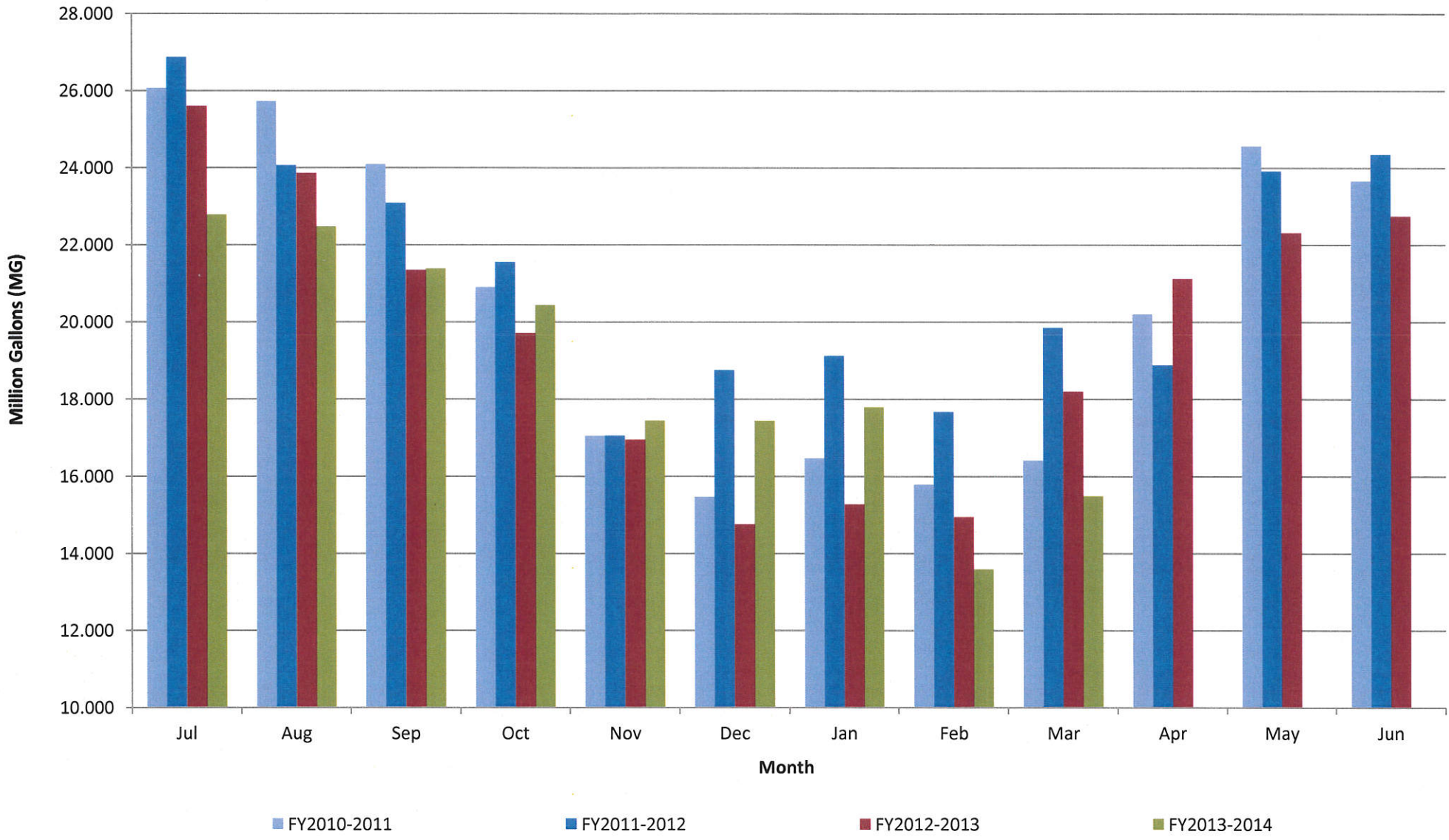
RECOMMENDATION

Staff encourages the Board to ask any questions they may have with regard to the aforementioned report or any other related item that may be listed separately as an agenda item.

Attachments

MARCH 2014	8th St./ El Moro Well	3rd St./ Bayside Well	10th St. Well	South Bay Well	South Bay Upper Well	Palisades Well	All Wells TOTAL	Last Years TOTAL	Percent% Differential
Total Gallons Produced, Mgal	3.3839	3.1542	3.6912	1.1840	0.0000	4.0630	15.4763	18.1925	-14.93%
Average Daily Flow, Mgal							0.4992	0.5869	
Total Gallons to Waste (Filter Backwash), Mgal	0.0000			0.0000	0.0000		0.0000	0	
Total Gallons to Waste (System Flushing), Mgal							0.0000	0	
Distribution System Losses (Water Line Breaks), Mgal							0.0026	0.014	
Total Gallons Adjusted, Mgal	3.3839			1.1840			15.4737	18.1785	-14.88%
Pump Runtime, total hours	156.1	720.2	193.2	717.5		117.1	1904.1	1928.1	-1.26%
Daily Avg. Runtime, hours/day	5.0	23.2	6.2	23.1		3.8			
Energy Used, kWatts	6307	5739	8863	7570		9265	37744	39716	-4.97%
Eff. Ratio, kWatts/hr	40.40	7.97	45.87	10.55		79.12			
Chlorine Used, total gallons	44.4	31.7	22.6	23.4		34.9	157.0	144	9.04%
Aqua Mag, pounds	46.2		45.4	0.0		31.2	122.8	123.2	-0.32%
Static water level, ft.	31.30	6.90	152.60	116.80	0.00	99.90			
Pump water level, ft.	146.70	52.90	249.70	156.40	0.00	254.60			
Draw-down level, ft.	115.40	46.00	97.10	39.60	0.00	154.70			
Gallons per minute	371	72	322	0	0	560			
Pressure, psi	92	82	34	60	0	80			
Alarm Events									
YES / NO	NO	YES	NO	NO	NO	NO			
Type of event									
Well Failure							0		
Power Failure							0		
Low Chlorine		1					1		
Other:							0		
Total number alarms	0	1	0	0	0	0	1	10	-90.00%

Historical to Present LOCS D Well Production Data



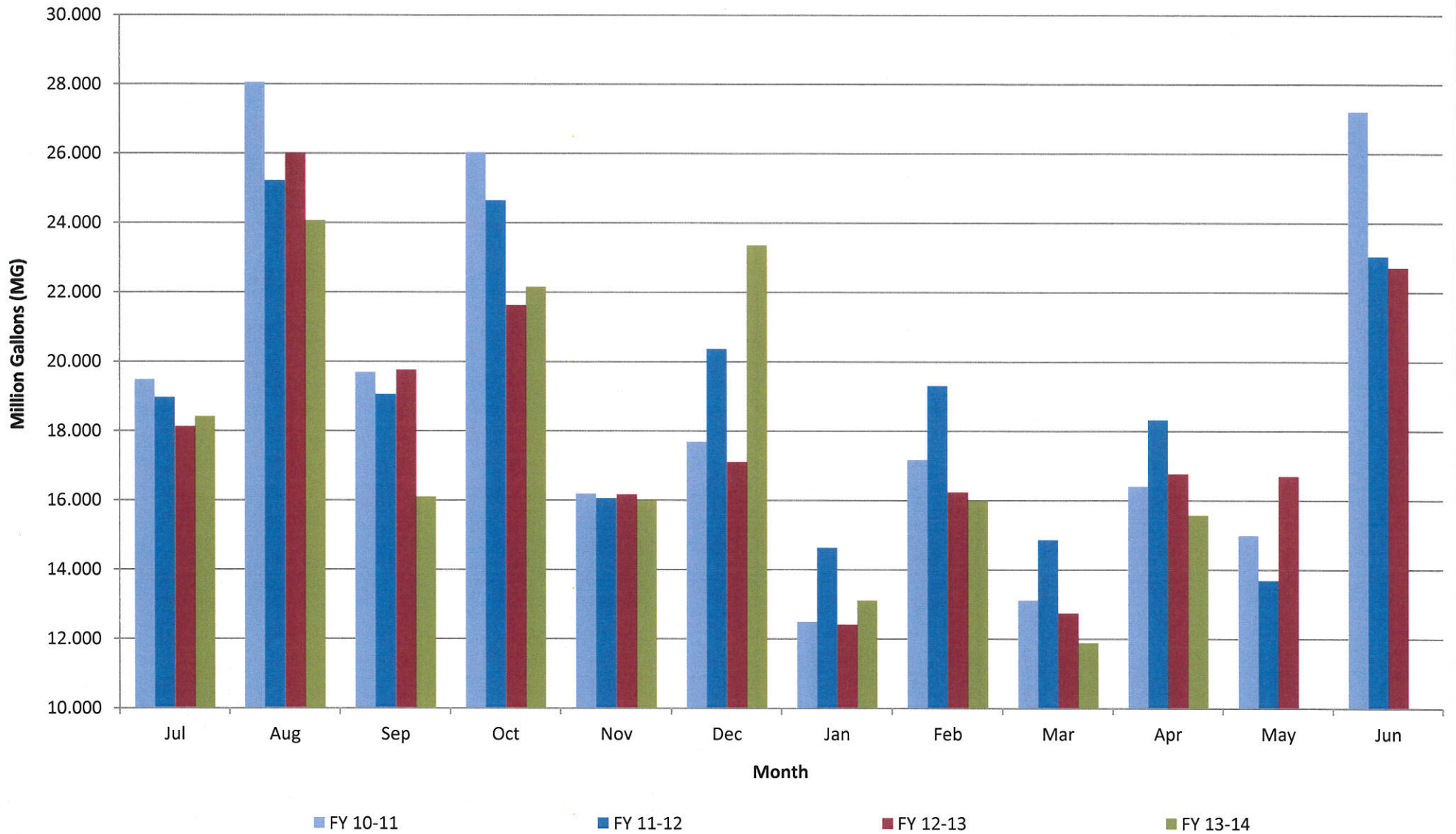
LOCSD Water Data

Water Production Data in Million Gallons

	FY 10-11	FY 11-12	FY 12-13	FY 13-14
Jul	26.066	26.868	25.600	22.779
Aug	25.724	24.064	23.862	22.470
Sep	24.087	23.086	21.340	21.380
Oct	20.895	21.543	19.708	20.431
Nov	17.042	17.046	16.939	17.436
Dec	15.460	18.745	14.747	17.431
Jan	16.463	19.117	15.268	17.780
Feb	15.783	17.662	14.940	13.584
Mar	16.402	19.843	18.193	15.476
Apr	20.195	18.873	21.118	
May	24.563	23.914	22.310	
Jun	23.660	24.347	22.743	
TOTAL	246.338	255.107	236.767	168.767

Consumption is billed for a two month period every month.
Revenue is based on gallons billed - not cash received.
Production is recorded daily.

Historical to Present LOCSD Water Consumption

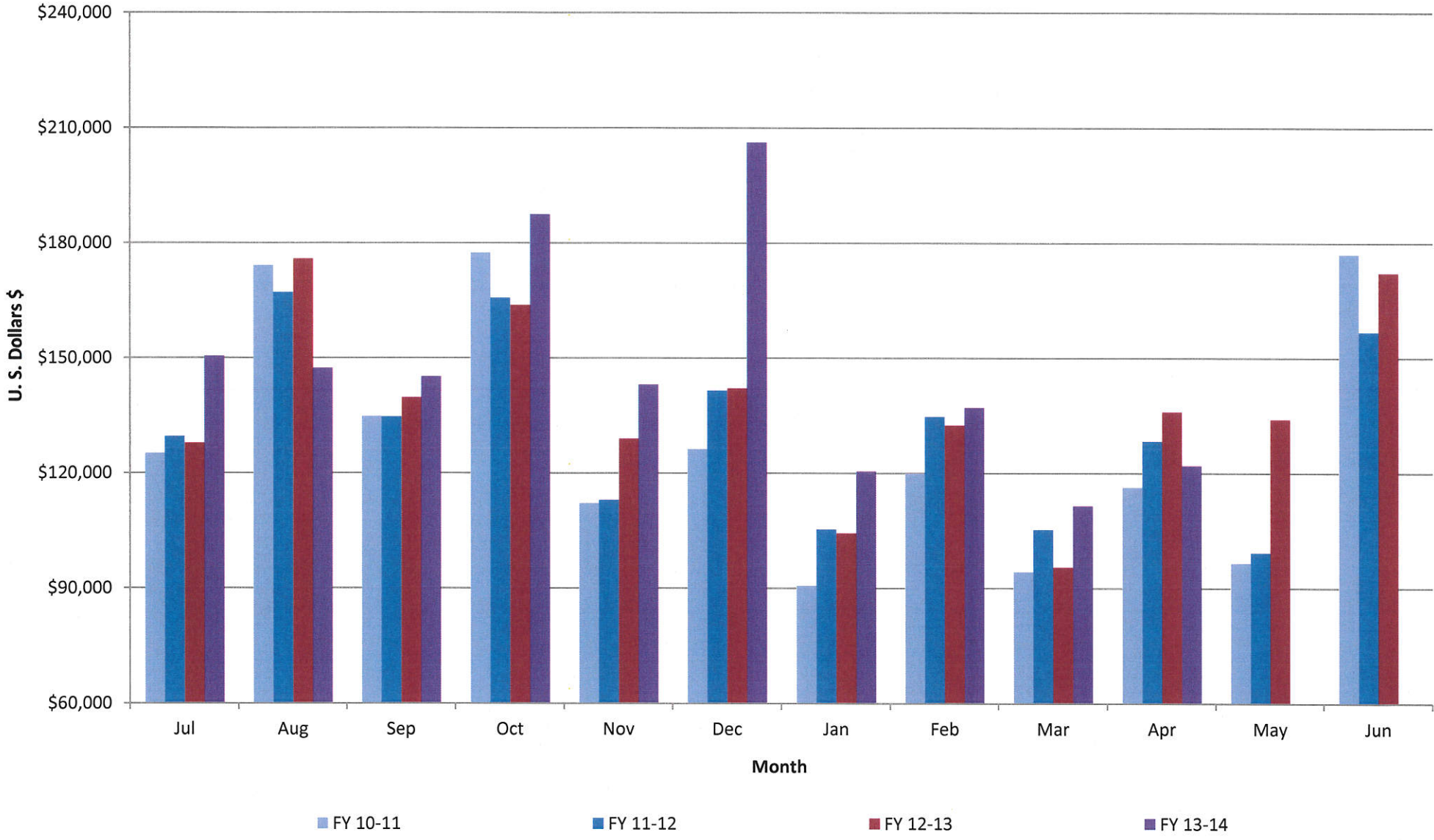


LOCSO Water Data

Water Consumption Data in Million Gallons						
% of Service Area	Billing Period		FY 10-11	FY 11-12	FY 12-13	FY 13-14
43	5/11 to 7/10	Jul	19.463	18.950	18.110	18.402
57	6/11 to 8/10	Aug	28.050	25.210	26.006	24.061
43	7/11 to 9/10	Sep	19.674	19.044	19.748	16.087
57	8/11 to 10/10	Oct	26.027	24.636	21.617	22.142
43	9/11 to 11/10	Nov	16.179	16.048	16.155	15.994
57	10/11 to 12/10	Dec	17.683	20.355	17.096	23.342
43	11/11 to 1/10	Jan	12.485	14.623	12.406	13.105
57	12/11 to 2/10	Feb	17.161	19.294	16.223	15.969
43	1/11 to 3/10	Mar	13.109	14.858	12.737	11.886
57	2/11 to 4/10	Apr	16.396	18.313	16.756	15.559
43	3/11 to 5/10	May	14.975	13.685	16.686	
57	4/11 to 6/10	Jun	27.212	23.029	22.709	
		TOTAL	228.414	228.044	216.249	176.547

Consumption is billed for a two month period every month.
 Revenue is based on gallons billed - not cash received.
 Production is recorded daily.

Historical to Present LOCS D Water Revenue



LOCSD Water Data

Water Revenue Data						
% of Service Area	Billing Period		FY 10-11	FY 11-12	FY 12-13	FY 13-14
43	5/11 to 7/10	Jul	\$125,133.24	\$129,524.46	\$127,737.70	\$150,401.90
57	6/11 to 8/10	Aug	\$174,057.07	\$167,062.07	\$175,798.70	\$147,246.54
43	7/11 to 9/10	Sep	\$134,756.85	\$134,650.62	\$139,628.43	\$145,135.28
57	8/11 to 10/10	Oct	\$177,362.45	\$165,624.63	\$163,698.98	\$187,431.78
43	9/11 to 11/10	Nov	\$112,171.55	\$113,044.46	\$128,918.55	\$143,029.03
57	10/11 to 12/10	Dec	\$126,236.55	\$141,492.06	\$142,026.32	\$206,187.91
43	11/11 to 1/10	Jan	\$90,676.15	\$105,371.44	\$104,328.08	\$120,500.40
57	12/11 to 2/10	Feb	\$119,946.90	\$134,692.14	\$132,433.64	\$137,045.65
43	1/11 to 3/10	Mar	\$94,298.10	\$105,313.67	\$95,487.96	\$111,475.31
57	2/11 to 4/10	Apr	\$116,335.40	\$128,368.97	\$135,947.81	\$121,943.68
43	3/11 to 5/10	May	\$96,549.67	\$99,287.66	\$133,939.00	
57	4/11 to 6/10	Jun	\$177,009.32	\$156,744.35	\$172,139.37	
		TOTAL	\$1,544,533.25	\$1,581,176.53	\$1,652,084.54	\$1,470,397.48

Consumption is billed for a two month period every month.
 Revenue is based on gallons billed - not cash received.
 Production is recorded daily.

