



July 31, 2014

TO: LOCSD Board of Directors
FROM: Margaret Falkner, Utility Compliance Technician III
SUBJECT: **Agenda Item 9B – 08/07/2014 Board Meeting**
Utilities Department Report for June 2014

MFX

President
Craig V. Baltimore

Vice President
R. Michael Wright

Directors
Leonard A. Moothart
Marshall E. Ochylski
Jon-Erik G. Storm

General Manager
Kathy A. Kivley

Temporary District Accountant
Michael L. Doyel

Fire Chief
Robert Lewin

Battalion Chief
Phill Veneris

Mailing Address:
P.O. Box 6064
Los Osos, CA 93412

Offices:
2122 9th Street, Suite 102
Los Osos, CA 93402

Phone: 805/528-9370
FAX: 805/528-9377

WATER PRODUCTION

The total production for the month of **June 2014** was approximately **20.2 million gallons (MG)** this equates to an average daily demand of 672,600 gallons. This represents a **decrease** in production from last year by approximately **11%**.

Fifty-seven percent of the service area received bills for approximately **15.3 MG** consumption for the period **May 12, 2014 through July 9, 2014**. This generated **\$137,753** in revenue. This represents approximately a **17 %** decrease in consumption and approximately **8%** decrease in revenue when compared to last year at this time.

An annual adjustment of the water rates went into effect July 1, 2014 in accordance with Resolution 2012-31. There was a 1.86% increase based on the Consumer Price Index. A rate sheet displaying the change is attached.

PRODUCTION AND RUNTIME HOURS BY WELL SITE

Below are two tables that break down the production by well site and the runtime on the pump motor for the month of June 2014. Last year's totals are included for comparison:

Production (MG) June	2014	2013
Palisades	5.1520	8.2200
3rd Street	3.1467	3.0595
El Moro	5.7728	5.1846
10th Street	5.2564	4.4820
South Bay (lower)	0.8508	1.7971
South Bay (upper)	0.0000	0.0000
TOTAL:	20.1787	22.7432

Runtime (Hours) June	2014	2013
Palisades	153.4	228.7
3rd St	711.1	705.2
El Moro	282.5	249.6
10th St	287.5	248.8
South Bay (lower)	713.7	698.1
South Bay (upper)	0.0	0.0
TOTAL:	2148.2	2130.4

Please refer to the attached June 2014 "Well Log Summary" for more data regarding production, runtime hours, chemical usage, soundings, and alarms.

CALIFORNIA STATE OF EMERGENCY DUE TO DROUGHT

On January 17, 2014, Governor Brown declared an emergency due to drought. He has called on all Californians to restrain water use. Attached to this report are graphs with tables which provide information on the District's water well depths.

In response to the ongoing severe drought, on July 15, 2014, the State Water Resources Control Board approved drought emergency regulations to ensure water agencies, their customers and state residents increase water conservation in urban settings. The District has a public hearing on this agenda to address these regulations.

WATER CONSERVATION

Staff attended the Baywood Park Farmer's Market on Santa Maria Avenue on July 21, 2014. Many fixtures were given away to people in attendance at the Farmer's Market. It was a very busy day. A water conservation banner is on display on the fence at the 10th Street well and tank site. Weekly water conservation messages continue to be placed on the Rotary electronic message board at the corner of South Bay Blvd. and Los Osos Valley Road. The marketing firm, Barnett Cox & Associates, was selected to lead the water conservation plan outreach program. An outline of objectives was submitted to LOCSO staff. Water conservation messages are distributed with water bills. The LOCSO web site has a whole page dedicated to water conservation. More information is available at:

<http://www.lososocsd.org/cm/utilities/water-conservation.html>

PUBLIC DRAFT INTEGRATED REGIONAL WATER MANAGEMENT (IRWM) PLAN 2014

On July 18, 2014 County staff submitted the final (not-yet-adopted) IRWM plan to the California Department of Water Resources and subsequently issued a press release Notice of Intent to Adopt an Update to the San Luis Obispo IRWM Plan. SLO County IRWM Program intends to adopt an update to the SLO County 2007 IRWM Plan at its public meeting on August 6, 2014 in the San Luis Obispo Library Community Room located at 995 Palm Street, San Luis Obispo, CA 93401. The Plan is scheduled to be on the Board of Supervisor's Agenda on August 12, 2014 for approval. After the Board of Supervisor's approves the plan, it will be brought to our Board of Director's for approval. More information is available at: <http://www.slocountywater.org>

STATE WATER RESOURCES CONTROL BOARD (SWRCB) NEWS

The State created a new division under the State Water Resources Control Board which includes the former California Department of Public Health Drinking Water Division. The Director of the new State Water Resources Control Board Drinking Water Division maintains a public health background. On June 6, 2014, the SWRCB issued a Draft Statewide General National Pollutant Discharge Elimination System (NPDES) Permit for drinking water system discharges. District Engineer and staff have been in contact with Regional staff for interpretation of content and how it relates to the LOCSO. A Public Hearing on the proposed Resolution approving exceptions to the Statewide Implementation Policy and the California Ocean Plan, and Consideration of a proposed Statewide General NPDES Permit for Drinking Water Systems Discharges is scheduled for August 5, 2014 in Sacramento. The staff note for item 10 on the State Water Board agenda is attached for your reference. For more information:

http://www.waterboards.ca.gov/water_issues/programs/npdes/drinkingwatersystems.shtml

UTILITIES DEPARTMENT OPERATIONS AND MAINTENANCE FOR WATER SYSTEM

During the month of June 2014, crew provided weekly water sampling for water permit compliance, read water meters for billing, and performed monthly well soundings. They relocated a service line that was in conflict with a storm water project of the County. They replaced several service lines and repaired leaks. Staff submitted a claim to the insurance company of an individual who damaged a fire hydrant on 6th & Santa Ysabel. Staff submitted the monthly monitoring report to the State Water Resource Control Board Drinking Water Program for June 2014 with no violations noted.

DRAINAGE WDID # 3 40M2000133

The General National Pollutant Discharge Elimination System (NPDES) Permit for storm water discharges for small Municipal Separate Storm Sewer Systems (MS4) is effective July 1, 2013. District staff has been working with staff at the Regional Water Quality Control Board on the current permit. Our annual report is due October 15, 2014 which covers the fiscal year July 2013 through June 2014.

BAYRIDGE ESTATES WDID# 3 401027001

Crews continue monitoring and groundskeeping. Once connected to the Los Osos Wastewater Project, the District crews will no longer maintain the septic system.

VISTA DE ORO WDID# 3 401024001

Crews continue monitoring and groundskeeping. Once connected to the Los Osos Wastewater Project, the District crews will no longer maintain the septic system.

RECOMMENDATION

Staff encourages the Board to ask any questions they may have with regard to the aforementioned report or any other related item that may be listed separately as an agenda item.

Attachments

LOCS D WATER RATE CHARTS
2014 RATES = 1.86% CPI ADJUSTMENT

7/1/2013		7/1/2014		7/1/2013		7/1/2014		7/1/2013		7/1/2014	
MINIMUM CHARGE		MINIMUM CHARGE		CCF	AMOUNT	CCF	AMOUNT	CCF	AMOUNT	CCF	AMOUNT
CCF	AMOUNT	CCF	AMOUNT	38	\$246.53	38	\$251.12	81	\$550.54	81	\$560.78
0 units	\$44.92	0 units	\$45.76	39	\$253.60	39	\$258.32	82	\$557.61	82	\$567.98
1.60/CCF		1.63/CCF		40	\$260.67	40	\$265.52	83	\$564.68	83	\$575.18
1	\$46.52	1	\$47.39	41	\$267.74	41	\$272.72	84	\$571.75	84	\$582.38
2	\$48.12	2	\$49.02	42	\$274.81	42	\$279.92	85	\$578.82	85	\$589.59
3	\$49.72	3	\$50.64	43	\$281.88	43	\$287.12	86	\$585.89	86	\$596.79
4	\$51.32	4	\$52.27	44	\$288.95	44	\$294.32	87	\$592.96	87	\$603.99
5	\$52.92	5	\$53.90	45	\$296.02	45	\$301.53	88	\$600.03	88	\$611.19
ADDITIONAL \$3.01/CCF		Additional \$3.07/CCF		46	\$303.09	46	\$308.73	89	\$607.10	89	\$618.39
6	\$55.93	6	\$56.97	47	\$310.16	47	\$315.93	90	\$614.17	90	\$625.59
7	\$58.94	7	\$60.04	48	\$317.23	48	\$323.13	91	\$621.24	91	\$632.80
8	\$61.95	8	\$63.10	49	\$324.30	49	\$330.33	92	\$628.31	92	\$640.00
9	\$64.96	9	\$66.17	50	\$331.37	50	\$337.53	93	\$635.38	93	\$647.20
10	\$67.97	10	\$69.23	51	\$338.44	51	\$344.73	94	\$642.45	94	\$654.40
ADDITIONAL \$5.13/CCF		Additional \$5.23/CCF		52	\$345.51	52	\$351.94	95	\$649.52	95	\$661.60
11	\$73.10	11	\$74.46	53	\$352.58	53	\$359.14	96	\$656.59	96	\$668.80
12	\$78.23	12	\$79.69	54	\$359.65	54	\$366.34	97	\$663.66	97	\$676.00
13	\$83.36	13	\$84.91	55	\$366.72	55	\$373.54	98	\$670.73	98	\$683.21
14	\$88.49	14	\$90.14	56	\$373.79	56	\$380.74	99	\$677.80	99	\$690.41
15	\$93.62	15	\$95.36	57	\$380.86	57	\$387.94	100	\$684.87	100	\$697.61
16	\$98.75	16	\$100.59	58	\$387.93	58	\$395.15	101	\$691.94	101	\$704.81
17	\$103.88	17	\$105.81	59	\$395.00	59	\$402.35	102	\$699.01	102	\$712.01
18	\$109.01	18	\$111.04	60	\$402.07	60	\$409.55	103	\$706.08	103	\$719.21
19	\$114.14	19	\$116.26	61	\$409.14	61	\$416.75	104	\$713.15	104	\$726.41
20	\$119.27	20	\$121.49	62	\$416.21	62	\$423.95	105	\$720.22	105	\$733.62
ADDITIONAL \$7.07/CCF		Additional \$7.20/CCF		63	\$423.28	63	\$431.15	106	\$727.29	106	\$740.82
21	\$126.34	21	\$128.69	64	\$430.35	64	\$438.35	107	\$734.36	107	\$748.02
22	\$133.41	22	\$135.89	65	\$437.42	65	\$445.56	108	\$741.43	108	\$755.22
23	\$140.48	23	\$143.09	66	\$444.49	66	\$452.76	109	\$748.50	109	\$762.42
24	\$147.55	24	\$150.29	67	\$451.56	67	\$459.96	110	\$755.57	110	\$769.62
25	\$154.62	25	\$157.50	68	\$458.63	68	\$467.16	111	\$762.64	111	\$776.83
26	\$161.69	26	\$164.70	69	\$465.70	69	\$474.36	112	\$769.71	112	\$784.03
27	\$168.76	27	\$171.90	70	\$472.77	70	\$481.56	113	\$776.78	113	\$791.23
28	\$175.83	28	\$179.10	71	\$479.84	71	\$488.77	114	\$783.85	114	\$798.43
29	\$182.90	29	\$186.30	72	\$486.91	72	\$495.97	115	\$790.92	115	\$805.63
30	\$189.97	30	\$193.50	73	\$493.98	73	\$503.17	116	\$797.99	116	\$812.83
31	\$197.04	31	\$200.70	74	\$501.05	74	\$510.37	117	\$805.06	117	\$820.03
32	\$204.11	32	\$207.91	75	\$508.12	75	\$517.57	118	\$812.13	118	\$827.24
33	\$211.18	33	\$215.11	76	\$515.19	76	\$524.77	119	\$819.20	119	\$834.44
34	\$218.25	34	\$222.31	77	\$522.26	77	\$531.97	120	\$826.27	120	\$841.64
35	\$225.32	35	\$229.51	78	\$529.33	78	\$539.18	121	\$833.34	121	\$848.84
36	\$232.39	36	\$236.71	79	\$536.40	79	\$546.38	122	\$840.41	122	\$856.04
37	\$239.46	37	\$243.91	80	\$543.47	80	\$553.58	123	\$847.48	123	\$863.24

Conversion:

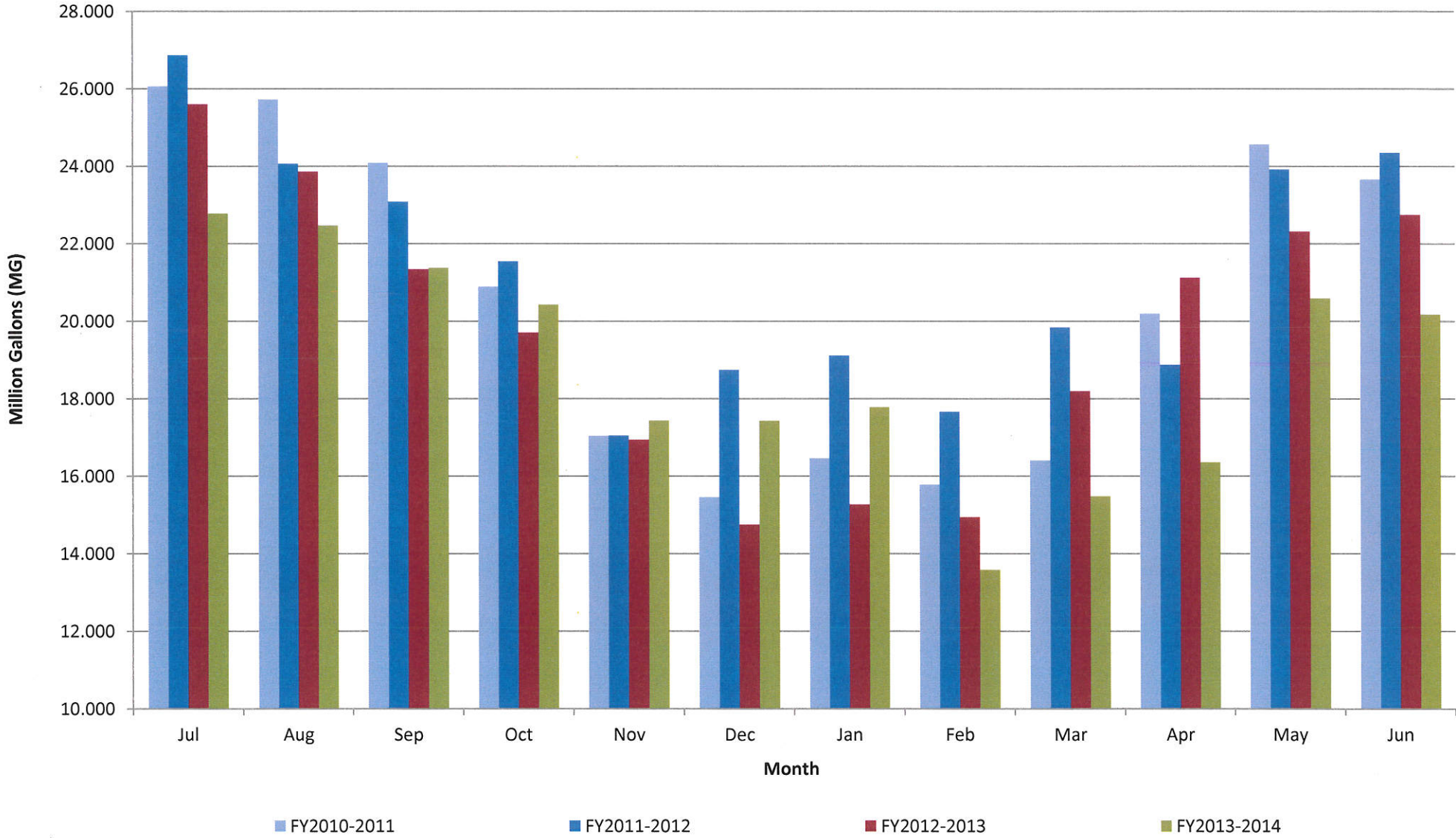
CCF is defined as 100 cubic feet which is equal to 748 gallons

Usage x 748 gallons ÷ 60 = Average Daily Use (gallons)

JUNE 2014	8th St./ El Moro Well	3rd St./ Bayside Well	10th St. Well	South Bay Well	South Bay Upper Well	Palisades Well	All Wells TOTAL	Last Years TOTAL	Percent Differential
Total Gallons Produced, Mgal	5.7728	3.1467	5.2564	0.8508	0.0000	5.1520	20.1787	22.7432	-11.28%
Average Daily Flow, Mgal							0.6726		
Total Gallons to Waste (Filter Backwash), Mgal	0.0000			0.0000	0.0000		0.0000	0.0368	
Total Gallons to Waste (System Flushing), Mgal							0.0000	0.0000	
Distribution System Losses (Water Line Breaks, etc), Mgal							0.0500	0.0106	
Total Gallons Adjusted, Mgal	5.7728			0.8508			20.1287	22.6958	-11.31%
Pump Runtime, total hours	282.5	711.1	287.5	713.7		153.4	2148.2	2130.4	0.83%
Daily Avg. Runtime, hours/day	9.4	23.7	9.6	23.8		5.1			
Energy Used, kWatts	11216	5666	11946	7401		11915	48144	52260	-7.88%
Eff. Ratio, kWatts/hr	39.70	7.97	41.55	10.37		77.67			
Chlorine Used, total gallons	75.7	41.9	35.4	21.3		45.0	219.2	120	82.69%
Aqua Mag, pounds	72.2		63.2	0.0		45.2	180.6	196.8	-8.23%
Static water level, ft.	39.70	7.55	160.15	128.50	90.10	110.30			
Pump water level, ft.	144.60	54.80	245.20	158.90	0.00	253.30			
Draw-down level, ft.	104.90	47.25	85.05	30.40	0.00	143.00			
Gallons per minute	355	73	359	28	0	554			
Pressure, psi	94	84	29	61	0	88			
Alarm Events									
YES / NO	NO	YES	YES	NO	NO	YES			
Type of event									
Well Failure							0		
Power Failure							0		
Low Chlorine						1	1		
Other:		1	2			1	4		
Total number alarms	0	1	2	0	0	2	5	3	66.67%

Well Log Summaries

Historical to Present LOCS D Well Production Data



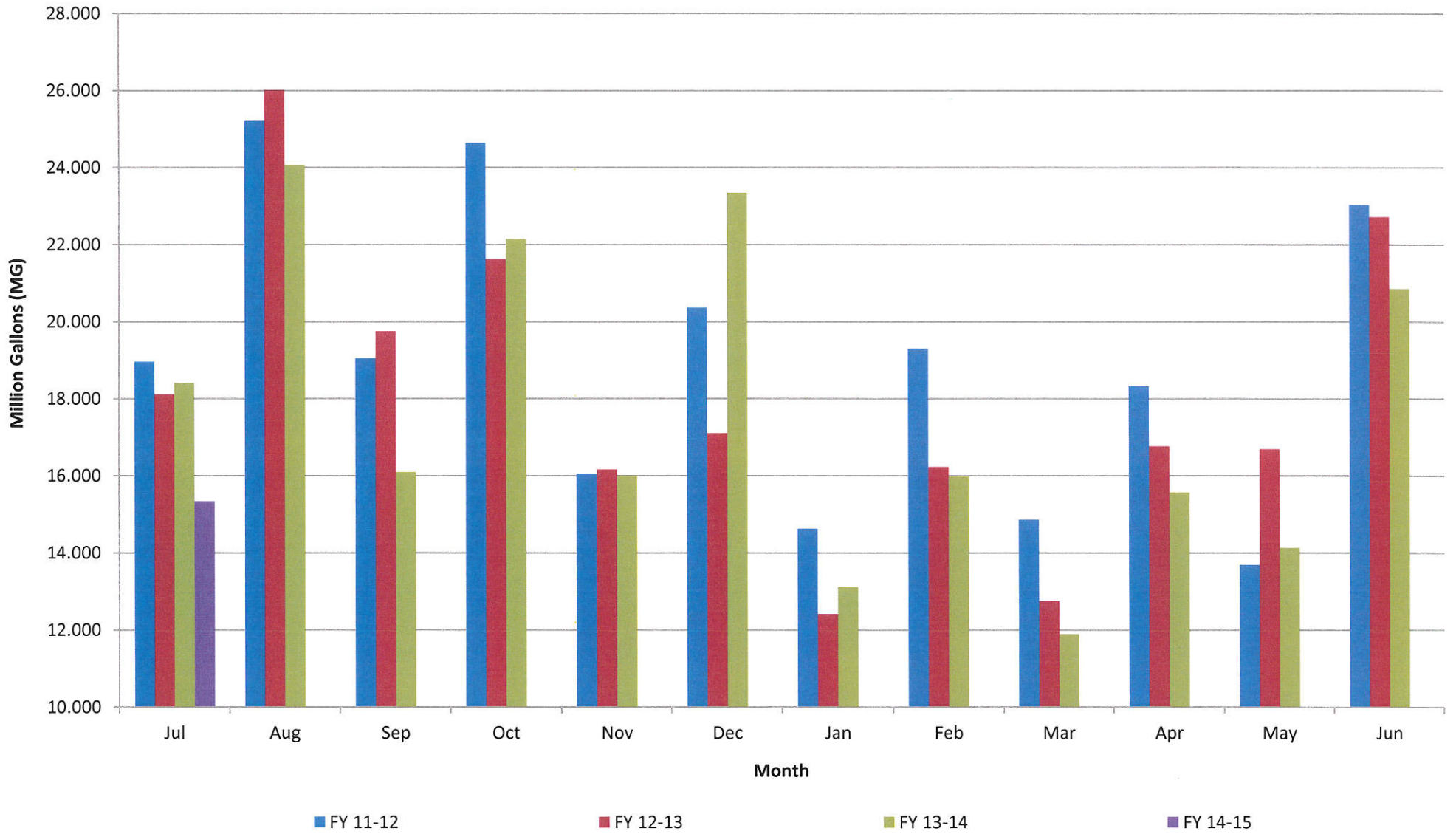
LOCSD Water Data

Water Production Data in Million Gallons

	FY 10-11	FY 11-12	FY 12-13	FY 13-14
Jul	26.066	26.868	25.600	22.779
Aug	25.724	24.064	23.862	22.470
Sep	24.087	23.086	21.340	21.380
Oct	20.895	21.543	19.708	20.431
Nov	17.042	17.046	16.939	17.436
Dec	15.460	18.745	14.747	17.431
Jan	16.463	19.117	15.268	17.780
Feb	15.783	17.662	14.940	13.584
Mar	16.402	19.843	18.193	15.476
Apr	20.195	18.873	21.118	16.354
May	24.563	23.914	22.310	20.591
Jun	23.660	24.347	22.743	20.179
TOTAL	246.338	255.107	236.767	225.890

Consumption is billed for a two month period every month.
Revenue is based on gallons billed - not cash received.
Production is recorded daily.

Historical to Present LOCS D Water Consumption

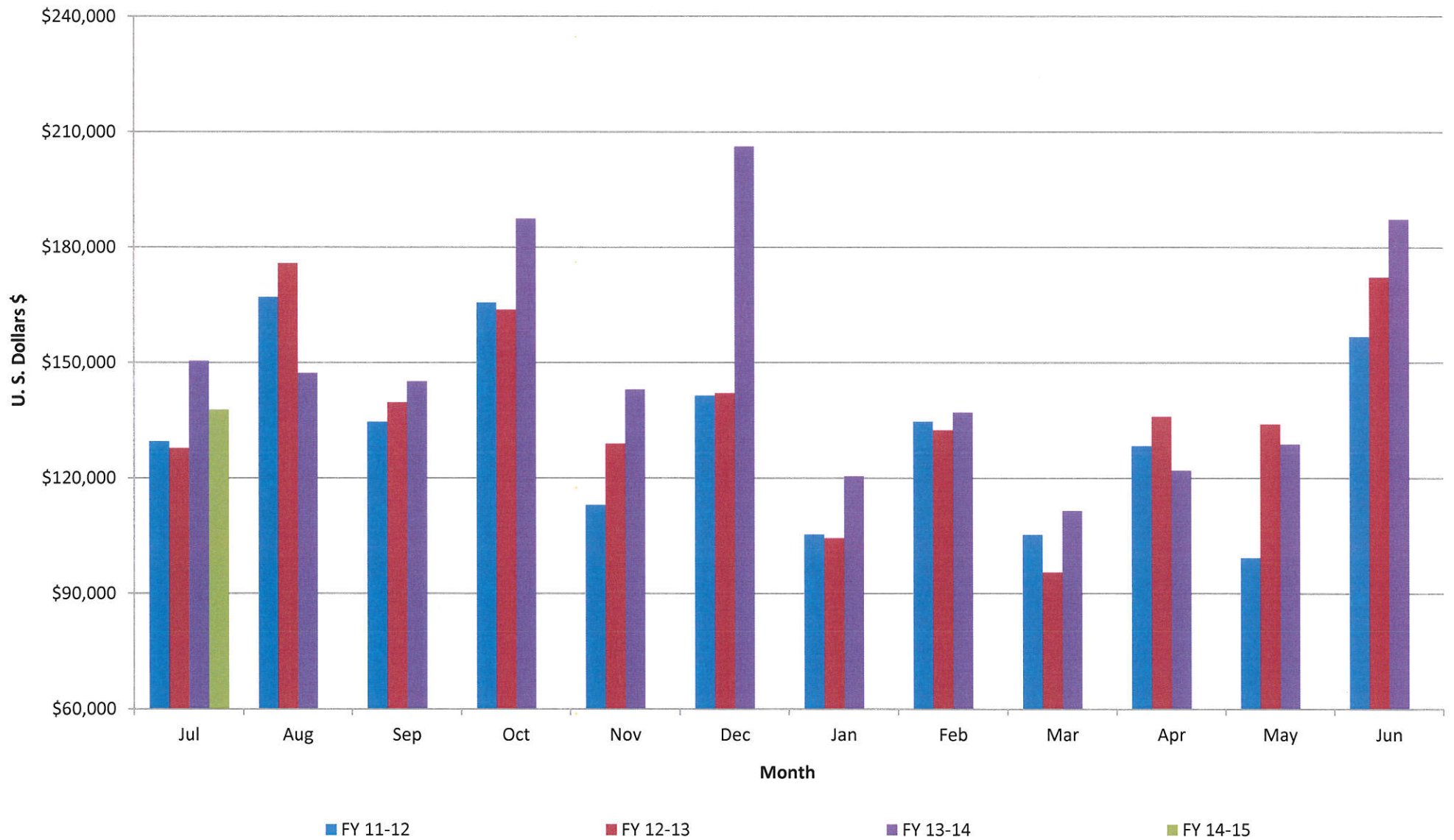


LOCSD Water Data

Water Consumption Data in Million Gallons						
% of Service Area	Billing Period		FY 11-12	FY 12-13	FY 13-14	FY 14-15
43	5/11 to 7/10	Jul	18.950	18.110	18.402	15.330
57	6/11 to 8/10	Aug	25.210	26.006	24.061	
43	7/11 to 9/10	Sep	19.044	19.748	16.087	
57	8/11 to 10/10	Oct	24.636	21.617	22.142	
43	9/11 to 11/10	Nov	16.048	16.155	15.994	
57	10/11 to 12/10	Dec	20.355	17.096	23.342	
43	11/11 to 1/10	Jan	14.623	12.406	13.105	
57	12/11 to 2/10	Feb	19.294	16.223	15.969	
43	1/11 to 3/10	Mar	14.858	12.737	11.886	
57	2/11 to 4/10	Apr	18.313	16.756	15.559	
43	3/11 to 5/10	May	13.685	16.686	14.131	
57	4/11 to 6/10	Jun	23.029	22.709	20.852	
		TOTAL	228.044	216.249	211.530	15.330

Consumption is billed for a two month period every month.
 Revenue is based on gallons billed - not cash received.
 Production is recorded daily.

Historical to Present LOCSD Water Revenue

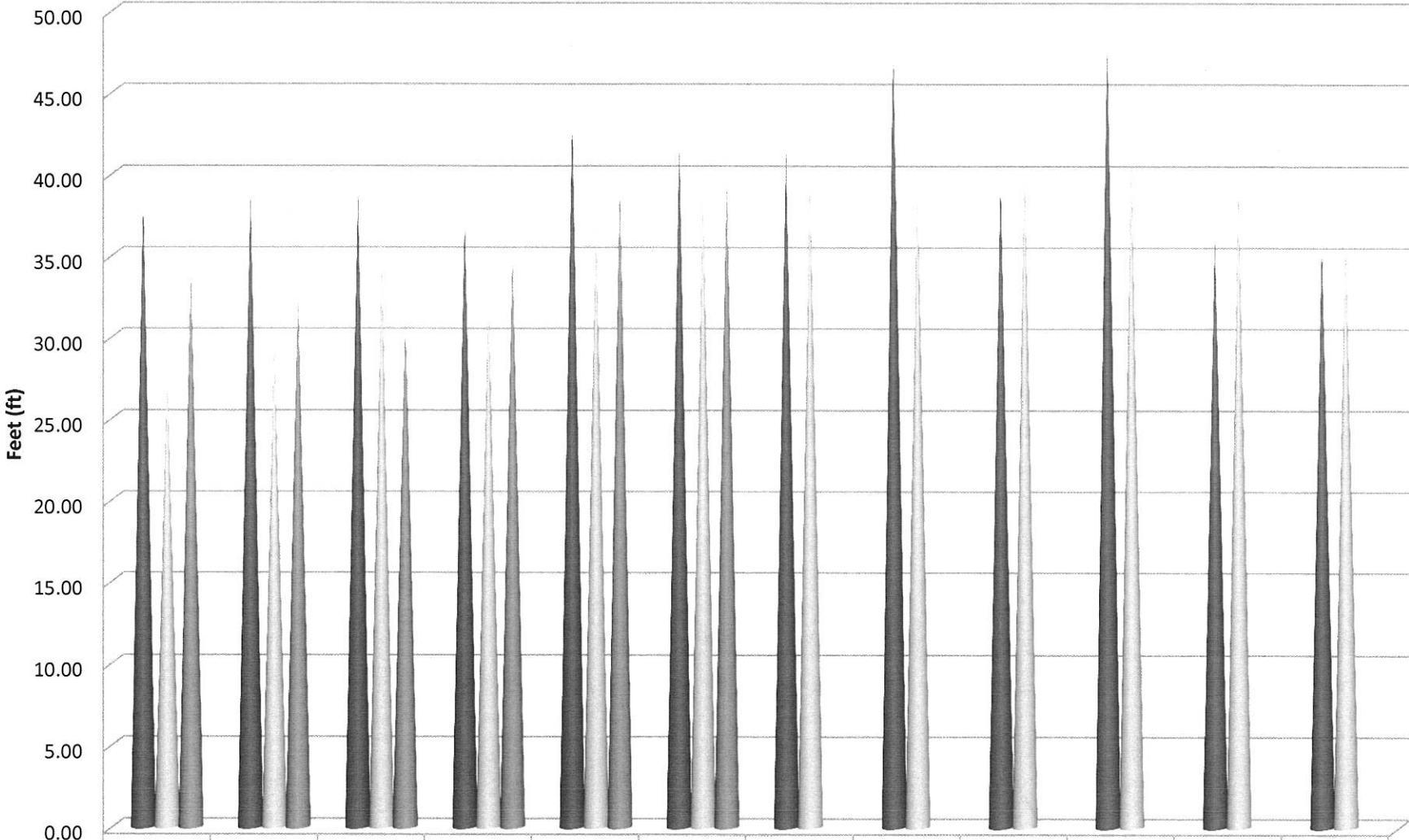


LOCSD Water Data

Water Revenue Data						
% of Service Area	Billing Period		FY 11-12	FY 12-13	FY 13-14	FY 14-15
43	5/11 to 7/10	Jul	\$129,524.46	\$127,737.70	\$150,401.90	\$137,752.98
57	6/11 to 8/10	Aug	\$167,062.07	\$175,798.70	\$147,246.54	
43	7/11 to 9/10	Sep	\$134,650.62	\$139,628.43	\$145,135.28	
57	8/11 to 10/10	Oct	\$165,624.63	\$163,698.98	\$187,431.78	
43	9/11 to 11/10	Nov	\$113,044.46	\$128,918.55	\$143,029.03	
57	10/11 to 12/10	Dec	\$141,492.06	\$142,026.32	\$206,187.91	
43	11/11 to 1/10	Jan	\$105,371.44	\$104,328.08	\$120,500.40	
57	12/11 to 2/10	Feb	\$134,692.14	\$132,433.64	\$137,045.65	
43	1/11 to 3/10	Mar	\$105,313.67	\$95,487.96	\$111,475.31	
57	2/11 to 4/10	Apr	\$128,368.97	\$135,947.81	\$121,943.68	
43	3/11 to 5/10	May	\$99,287.66	\$133,939.00	\$128,784.61	
57	4/11 to 6/10	Jun	\$156,744.35	\$172,139.37	\$187,230.13	
		TOTAL	\$1,581,176.53	\$1,652,084.54	\$1,786,412.22	\$137,752.98

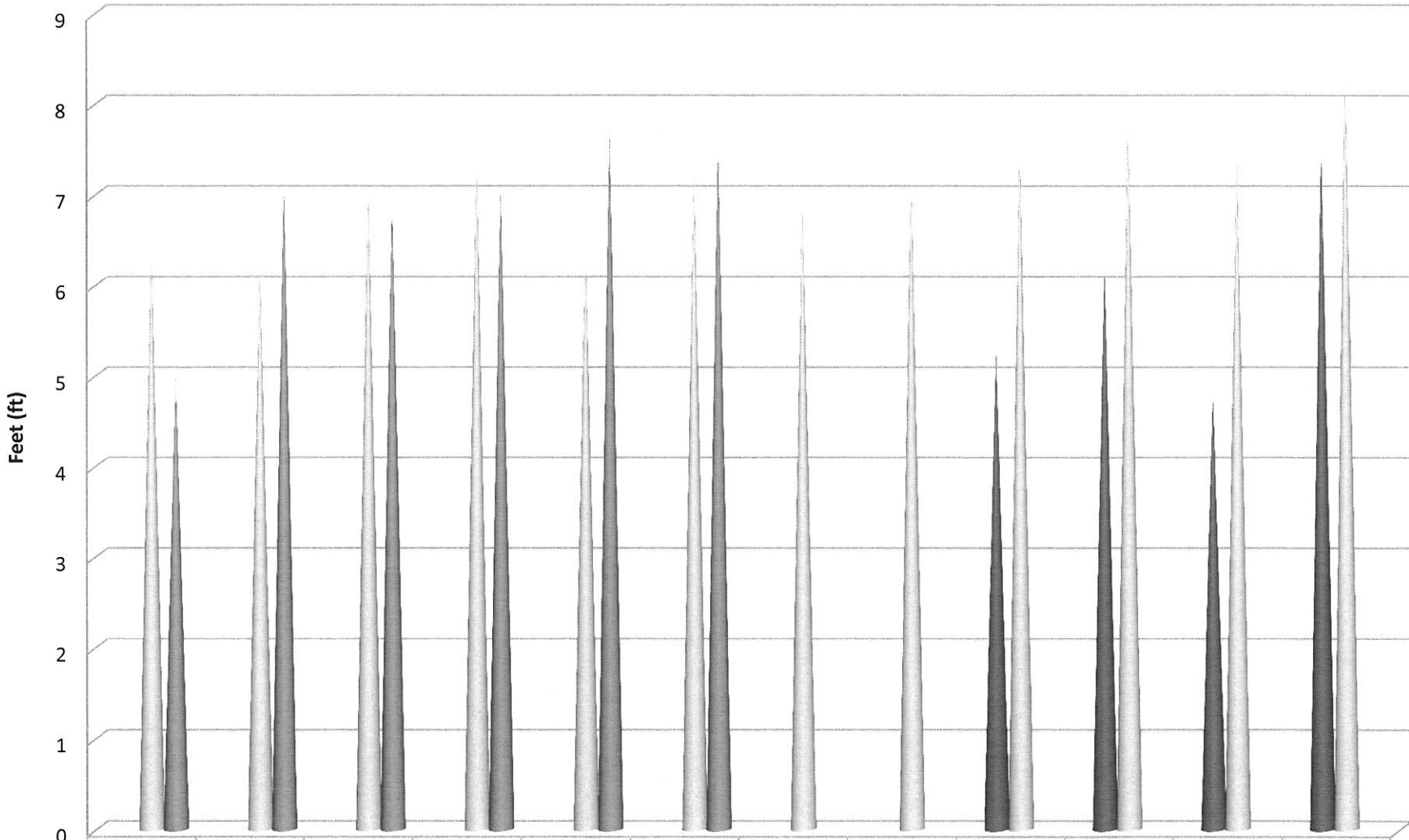
Consumption is billed for a two month period every month.
 Revenue is based on gallons billed - not cash received.
 Production is recorded daily.

8th Street Well Static Water Levels



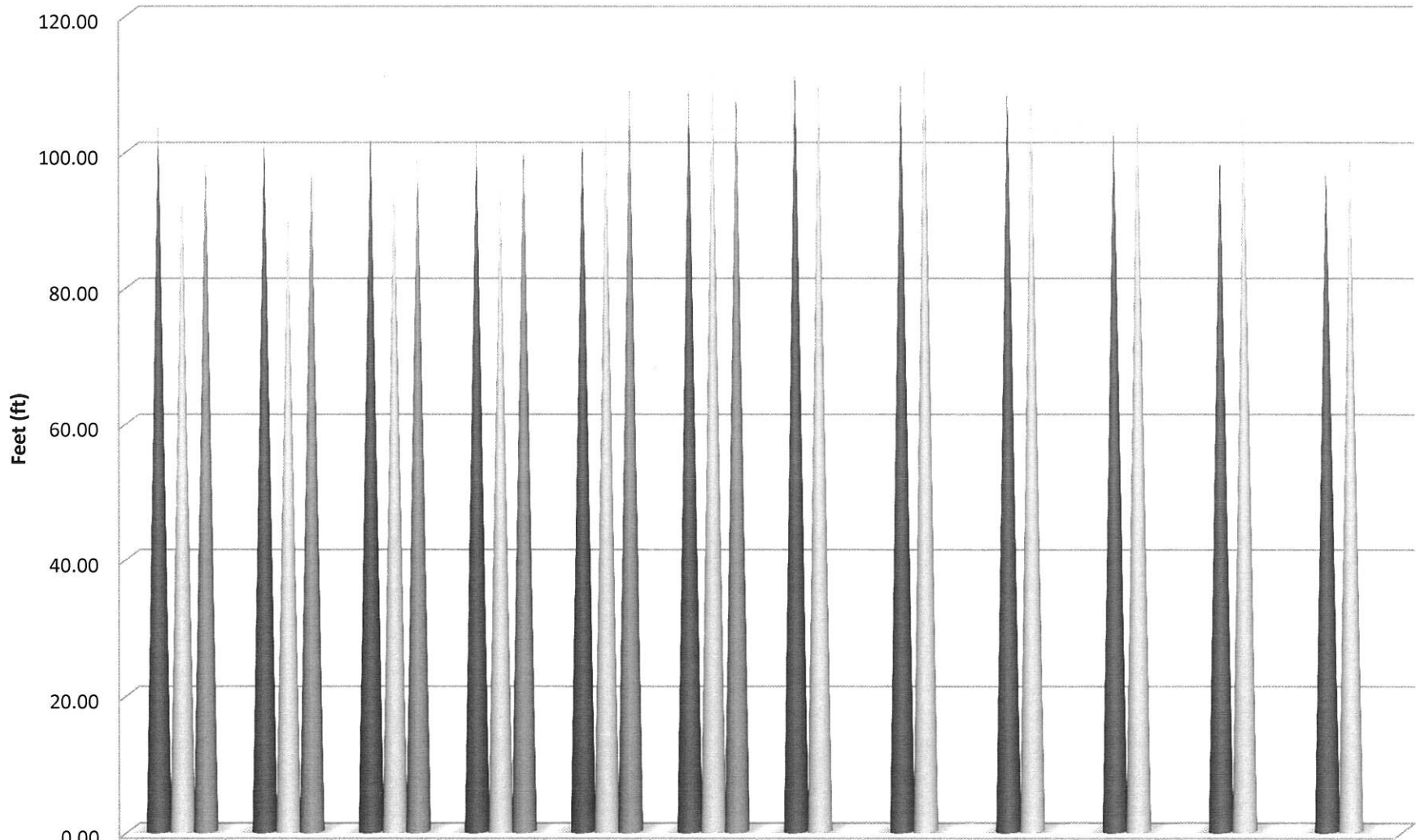
	Jan	Feb	Mar	Apr	May	Jun	Jul	Aug	Sep	Oct	Nov	Dec
■ 2012	38.40	38.90	38.90	37.20	43.45	41.90	41.40	47.60	39.70	48.10	36.20	35.80
■ 2013	28.00	29.80	34.80	32.50	37.20	39.00	39.80	39.80	41.10	41.30	39.50	37.00
■ 2014	34.20	32.50	31.30	35.10	39.40	39.70						

3rd Street Well Static Water Levels



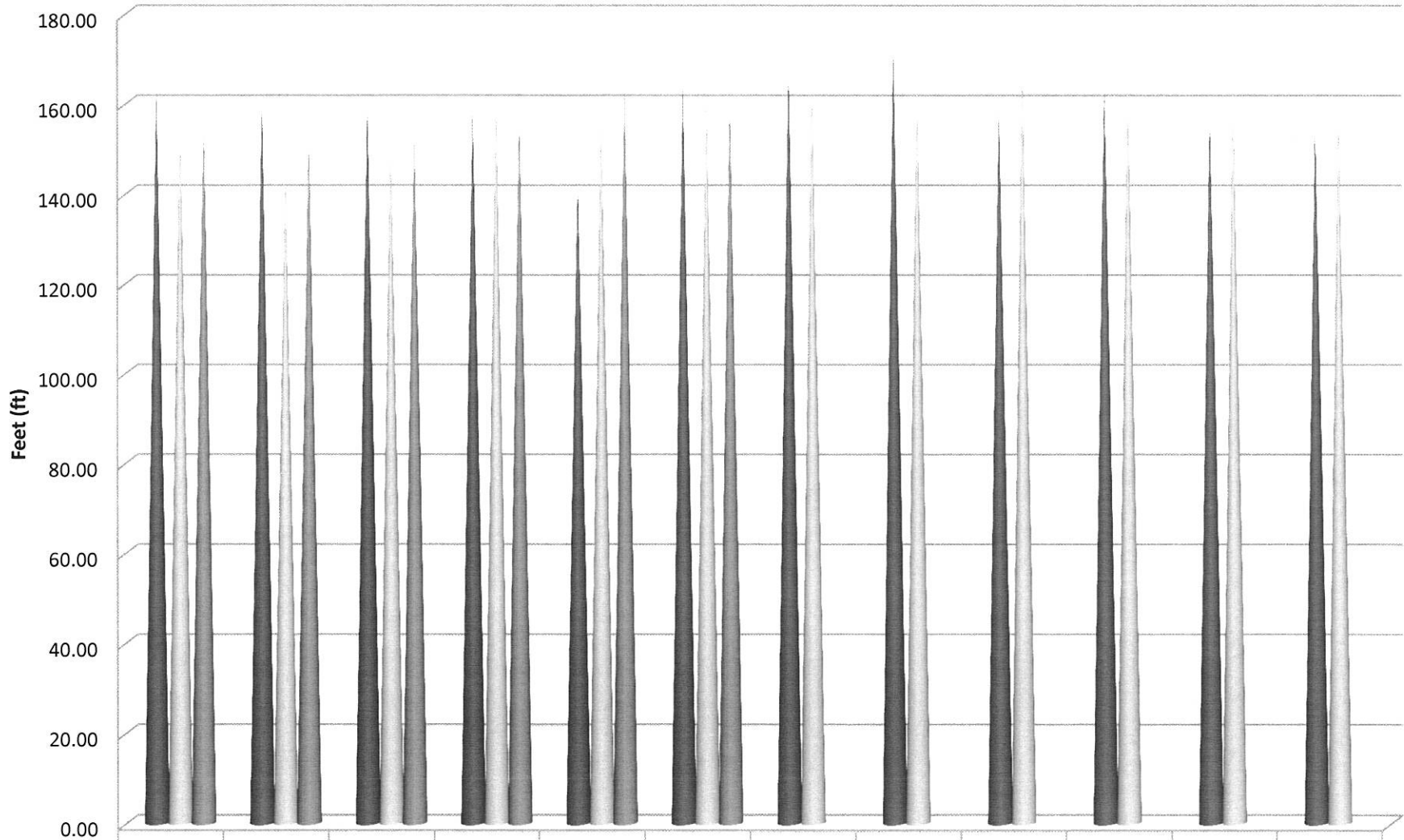
	Jan	Feb	Mar	Apr	May	Jun	Jul	Aug	Sep	Oct	Nov	Dec
■ 2012									5.25	6.20	4.80	7.50
■ 2013	6.50	6.30	7.10	7.50	6.50	7.30	7.00	7.30	7.70	7.90	7.50	8.45
■ 2014	5.00	7.10	6.90	7.10	7.70	7.55						

Palisades Well Static Water Levels



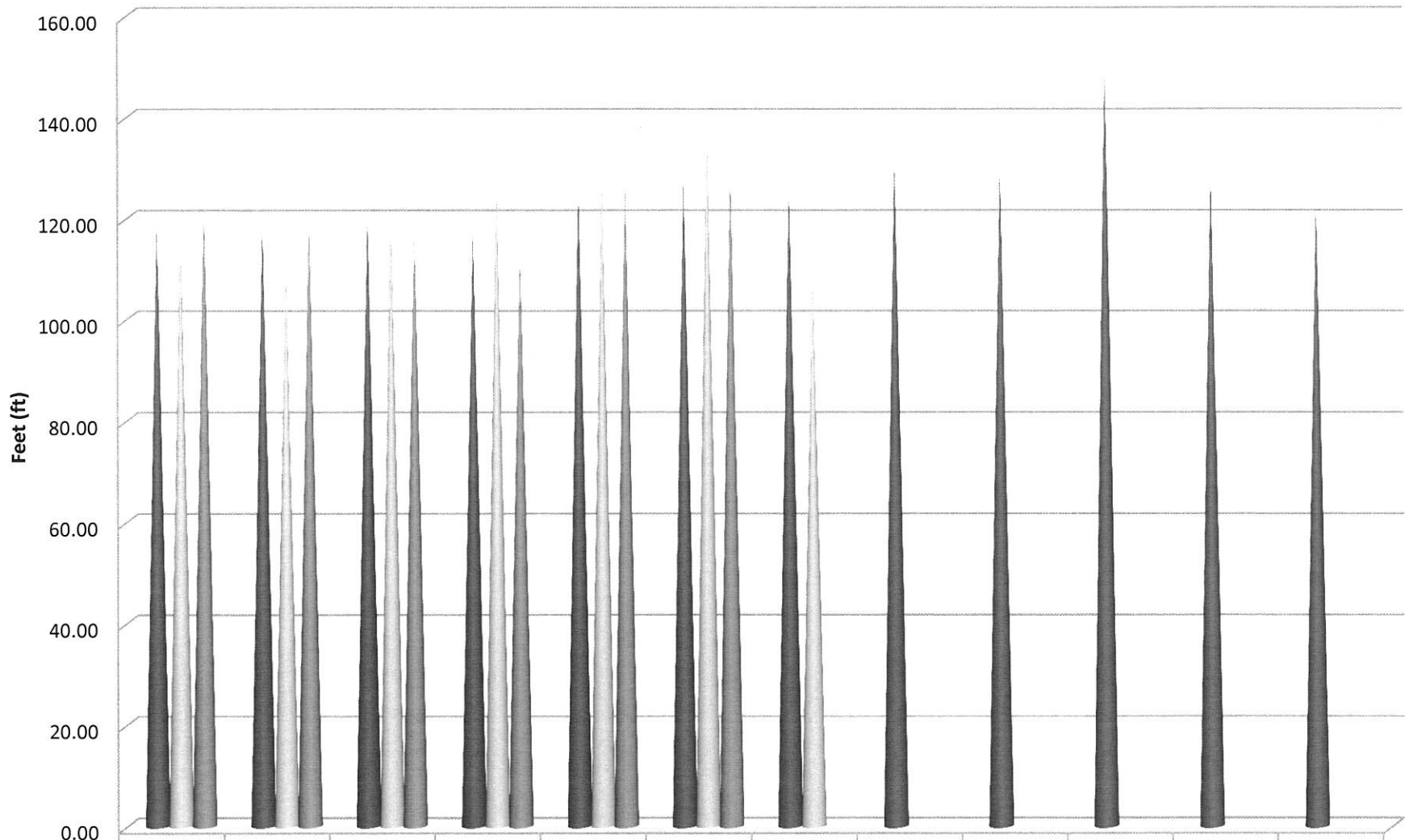
	Jan	Feb	Mar	Apr	May	Jun	Jul	Aug	Sep	Oct	Nov	Dec
■ 2012	105.00	102.60	103.50	102.30	103.10	109.30	113.80	111.40	110.30	104.60	100.90	98.50
■ 2013	97.20	92.30	97.90	96.20	104.90	113.60	112.60	118.70	109.80	109.90	106.50	101.35
■ 2014	100.40	98.60	99.90	102.10	109.85	110.3						

10th Street Well Static Water Levels



	Jan	Feb	Mar	Apr	May	Jun	Jul	Aug	Sep	Oct	Nov	Dec
■ 2012	162.85	160.60	159.90	158.80	142.50	163.50	168.00	171.90	158.80	164.60	157.40	154.60
■ 2013	157.00	144.90	152.90	161.60	156.80	161.30	163.90	164.80	168.40	164.30	161.20	157.45
■ 2014	156.20	152.40	152.60	156.80	162.90	160.15						

South Bay Lower Well Static Water Levels



	Jan	Feb	Mar	Apr	May	Jun	Jul	Aug	Sep	Oct	Nov	Dec
■ 2012	118.60	118.20	120.30	117.10	125.70	127.10	126.20	131.20	129.70	149.60	129.00	122.60
■ 2013	117.25	109.90	121.60	127.60	127.50	139.00	108.60					
■ 2014	122.10	118.90	116.80	112.90	126.00	128.50						

**STATE WATER RESOURCES CONTROL BOARD
BOARD HEARING SESSION – DIVISION OF WATER QUALITY
AUGUST 5, 2014**

ITEM 10

SUBJECT

PUBLIC HEARING ON THE PROPOSED RESOLUTION APPROVING EXCEPTIONS TO THE STATEWIDE IMPLEMENTATION POLICY AND THE CALIFORNIA OCEAN PLAN, AND PROPOSED STATEWIDE GENERAL NPDES PERMIT FOR DRINKING WATER SYSTEMS DISCHARGES

DISCUSSION

Water purveyors are responsible for developing water supplies and providing drinking water to communities and customers in accordance with statutory requirements of the federal Safe Drinking Water Act and the California Health and Safety Code. Mandatory system-development and system-maintenance activities often result in surface water discharges, either via storm drain systems or directly to a creek, river, lake, estuary, or the ocean. The mandatory discharges consist of raw water, potable water, and/or treated drinking water, and may contain constituents that threaten to impair surface water quality.

The draft Resolution proposes: 1) to approve the Initial Study/Mitigated Negative Declaration (IS/MND) for the project, and 2) to grant water purveyors statewide an exception to the State Water Board's *Policy for Implementation of Toxics Standards for Inland Surface Waters, Enclosed Bays, and Estuaries of California* and the *California Ocean Plan* for compliance with California Toxics Rule priority pollutant criteria/objectives. These state policies allow for the granting of this regulatory exception for discharges from mandated activities necessary to implement system control measures to fulfill statutory requirements under the federal Safe Drinking Water Act or the California Health and Safety Code. Such an exception will allow water purveyors statewide to proceed with mandated responsibilities to protect public health without conflicting restrictions or concern of violating elements of the California Toxics Rule.

State Water Board staff prepared a draft IS/MND to fulfill the California Environmental Quality Act requirements for the State Water Board's proposed granting of an exception to the above-mentioned policies. The draft IS/MND is attached to the draft Resolution. Adoption of the proposed Resolution includes the State Water Board's approval of the IS/MND.

The proposed permit is a statewide general National Pollutant Discharge Elimination System (NPDES) permit for discharges from drinking water systems that serve 15 or more connections and are regulated through the [Department of Public Health or State Water Board] Drinking Water Program or a local county health department. The permit is intended to promote regulatory efficiency, consistency and reduced cost of compliance, and to implement regulatory exceptions specifically for mandated water system activities (as proposed per the draft resolution). Through proposed effluent limitations and provisions for implementation of best management practices, the proposed permit targets specific water quality threats from drinking water system discharges. Beneficial uses of receiving waters are proposed to be protected through permit requirements that target: (1) toxicity from chlorinated water, (2) sediment and solids loading from transport of debris and trash, and erosion, and (3) hydromodification due to high velocity and/or high volume discharges.

The proposed permit is also intended to promote multiple uses of the generally high quality water that is discharged from drinking water systems. This would be accomplished through reduction or elimination of monitoring requirements for beneficial use or reuse of water prior to reaching surface water (especially discharge to the ocean).

POLICY ISSUE

The draft statewide general NPDES permit is proposed to provide regulatory coverage to water purveyors statewide for discharges that comply with specified requirements and, for those constituents covered by the California Toxics Rule and California Ocean Plan exceptions, have less-than-significant impact on the environment with appropriate mitigation. The proposed permit requires enrollment of all community water systems that provide drinking water to a community through 15 connections or more, other than the following: (1) water purveyors that are named as a permittee or co-permittee on a municipal NPDES storm water permit, or (2) water purveyors that have entered into a local agreement with a municipal NPDES storm water permittee to discharge into its storm water system. The proposed permit additionally allows Regional Water Boards to permit water purveyors with a separate NPDES permit if the discharge from the water purveyor's system does not comply with the eligibility components of the proposed permit.

FISCAL IMPACT

The NPDES program is a fee based program. State Water Board staff work resulting from this action will not require resources above and beyond the existing and future budgeted resources.

REGIONAL BOARD IMPACT

Yes. If adopted, the proposed permit will initially require Regional Water Boards to address existing enrollment in existing NPDES permits for water purveyors. State Water Board staff will implement the proposed permit. Once implemented, Regional Water Boards will no longer need to provide staff resources for the permitting of discharges from drinking water systems enrolled in the statewide permit. No changes are proposed to the existing staff resources provided by regional water boards for enforcement purposes.

STAFF RECOMMENDATION

None. The Board will not be asked to make a decision at this public hearing.

State Water Board action on this item will assist the Water Boards in reaching Goal 6 of the Strategic Plan Update: 2008-2012 to enhance consistency across the Water Boards, on an ongoing basis, to ensure our processes are effective, efficient, and predictable, and to promote fair and equitable application of laws, regulations, policies, and procedures. In particular, approval of this item will assist in fulfilling Objective 6.2 to target consistency improvements in program delivery identified through past input, and solicit input to identify consistency issues as they arise.