



June 4, 2020

**TO:** LOCSD Board of Directors

**FROM:** Jose Acosta, Utility Systems Manager  
Frank Asuncion, Water Resource Crew Leader  
Alicia Zuniga, Utility Billing Specialist

**SUBJECT:** **Agenda Item 4C- 6/4/2020 Board Meeting**  
Utilities Department Report for **April 2020**

**President**  
Charles L. Cesena

**Vice President**  
Christine M. Womack

**Directors**  
Matthew D. Fourcroy  
Vicki L. Milledge  
Marshall E. Ochylski

**General Manager**  
Ron Munds

**District Accountant**  
Robert Stilts, CPA

**Unit Chief**  
Scott M. Jalbert

**Battalion Chief**  
Paul Provence

**Mailing Address:**  
P.O. Box 6064  
Los Osos, CA 93412

**Offices:**  
2122 9<sup>th</sup> Street, Suite 110  
Los Osos, CA 93402

**Phone:** 805/528-9370  
**FAX:** 805/528-9377

www.losososcsd.org

**WATER PRODUCTION INFORMATION**

The total production for the month of **April 2020** was approximately **13.0 million gallons (MG)** this equates to an average daily demand of **432,100** gallons. This represents a **decrease** in production from last year by approximately **8.79%**.

Using the state's formula to calculate residential usage per capita per day, for the month of **April 2020** our residential customers used 57.8 gallons per person per day, a decrease from 63.4 gallons per person per day in April 2019.

**PRODUCTION AND RUNTIME HOURS BY WELL SITE**

The following tables break down the production by well site and runtime on the pump motors for the month of **April 2020**. Totals for last year are included for comparison:

<b>Production (MG) April</b>	<b>2020</b>	<b>2019</b>	<b>% Change</b>
Palisades	3.49	1.60	118.1
3 <sup>rd</sup> Street/Bayside	0	0	0
8 <sup>th</sup> Street/El Moro	4.11	6.94	-40.8
10 <sup>th</sup> Street	3.55	5.51	-35.6
South Bay (lower)	1.25	0.00	0.0
South Bay (upper)	0.56	0.17	229.4
<b>TOTAL:</b>	<b>12.96</b>	<b>14.22</b>	

<b>Runtime (Hours) April</b>	<b>2020</b>	<b>2019</b>
Palisades	169.3	76.2
3 <sup>rd</sup> Street/Bayside	0.2	0.1
8 <sup>th</sup> Street/El Moro	226.1	342.8
10 <sup>th</sup> Street	226.2	317.4
South Bay (lower)	435.7	0.0
South Bay (upper)	334.4	104.1
<b>TOTAL:</b>	<b>1391.9</b>	<b>840.6</b>

**WATER BILLING INFORMATION**

Fifty-seven percent of the service area received bills for approximately **12.87 MG** consumption for the period of February 12, 2020 through April 10, 2020. This generated approximately **\$244,449.45** in revenue.

**UTILITIES DEPARTMENT OPERATIONS AND MAINTENANCE**

During the month of April 2020, the Utilities crew performed all required operations and maintenance tasks. The various tasks and facilities maintained are:

**WATER DISTRIBUTION AND TREATMENT**

- Daily, weekly, and monthly water quality sampling, analysis and reporting, for all well sites and throughout the distribution system.
- Monthly meter reading.
- Weed abatement performed around all hydrants.
- Working on a cover for chlorine storage tank.
- Grounds keeping at well and drainage sites.

**DRAINAGE WDID # 3 40M2000133**

The District continue to operate and comply with the General National Pollutant Discharge Elimination System (NPDES) Permit for storm water discharges for small Municipal Separate Storm Sewer Systems (MS4). Storm water pollution prevention measures are available on the District's Drainage web page: <http://www.losososcsd.org/drainage-e293b4b>

**RAINFALL TOTALS**

The County has a link to rain and reservoir information: <http://wr.slocountywater.org/home.php> below is a table of historical rainfall totals from the Los Osos Landfill rain monitor. This has been arranged to coincide with our Water Shortage Contingency Plan Climate Trigger which is based on rainfall measured from April 1<sup>st</sup> through March 31<sup>st</sup>.

<b>Station Name and Number</b>													<b>Los Osos Landfill # 727</b>
<b>*** All units are in inches ***</b>													
<b>Water Year</b>	<b>APR</b>	<b>MAY</b>	<b>JUN</b>	<b>JUL</b>	<b>AUG</b>	<b>SEP</b>	<b>OCT</b>	<b>NOV</b>	<b>DEC</b>	<b>JAN</b>	<b>FEB</b>	<b>MAR</b>	<b>Total</b>
2020-2021	1.89												<b>1.89</b>
2019-2020	0.08	1.53	0.00	0.00	0.08	0.00	0.00	2.13	4.37	0.20	0.04	4.80	<b>13.23</b>
2018-2019	0.79	0.00	0.00	0.00	0.00	0.00	0.43	3.75	1.14	6.14	6.90	3.94	<b>23.09</b>
2017 - 2018	0.55	0.27	0.00	0.00	0.00	0.16	0.16	0.47	0.12	3.78	0.16	7.95	<b>13.62</b>
2016 - 2017	0.20	0.00	0.00	0.00	0.00	0.00	1.65	2.76	3.39	9.02	7.65	1.34	<b>26.01</b>
2015 - 2016	0.67	0.12	0.00	1.93	0.00	0.08	0.08	1.26	1.85	5.04	0.86	4.85	<b>16.74</b>
2014 - 2015	0.71	0.00	0.00	0.00	0.00	0.00	0.00	0.28	5.20	0.08	0.91	0.43	<b>7.61</b>
2013 - 2014	0.31	0.12	0.04	0.00	0.00	0.00	0.24	0.28	0.12	0.00	4.06	1.42	<b>6.59</b>
2012 - 2013	2.24	0.00	0.00	0.00	0.00	0.00	1.18	1.69	2.64	1.02	0.67	0.43	<b>9.87</b>

**RECOMMENDATION**

Staff encourages the Board to ask any questions they may have with regard to the aforementioned report or any other related item that may be listed separately as an agenda item.

Attachments

<b>APRIL 2020</b>	<b>8th St./ EI Moro Well</b>	<b>3rd St./ Bayside Well</b>	<b>10th St. Well</b>	<b>South Bay Well</b>	<b>South Bay Upper Well</b>	<b>Palisades Well</b>	<b>All Wells TOTAL</b>	<b>Last Years TOTAL</b>	<b>Percent% Differential</b>
Total Gallons Produced, Mgal	4.1110	0.0000	3.5481	1.2487	0.5640	3.4925	<b>12.9643</b>	14.2144	-8.79%
Average Daily Flow, Mgal							0.4321		
Total Gallons to Waste ( Filter Backwash), Mgal	0.0350			0.0000	0.0000		0.0350	0.0350	
Total Gallons to Waste ( System Flushing), Mgal							0.0000	0.0000	
Distribution System Losses ( Water Line Breaks), Mgal							0.0000	0.0000	
Total Gallons Adjusted, Mgal	4.0760			1.2487			<b>12.9293</b>	14.1794	-8.82%
Pump Runtime, total hours	226.1	0.2	226.2	435.7	334.4	169.3	1391.9	840.6	65.58%
Daily Avg. Runtime, hours/day	7.5	0.0	7.5	14.5	11.1	5.6			
Energy Used, kWatts	9315	33	9996	5785		6137	31266	29929	4.47%
Eff. Ratio, kWatts/hr	41.20	165.00	44.19	0.00		0.00			
Chlorine Used, total gallons	62.6	0.0	28.9	27.1		24.1	142.6	137.3	3.86%
Aqua Mag, pounds	56.8		48.0	0.0		33.4	138.2	153.6	-10.03%
Static water level, ft.	28.20	4.00	148.50	108.70	90.00	96.00			
Pump water level, ft.	145.80	OF	248.30	158.25	121.20	186.30			
Draw-down level, ft.	117.60	#VALUE!	99.80	49.55	31.20	90.30			
Gallons per minute	303	SERVICE	262	47	32	249			
Pressure, psi	95	0	48	65	59	55			

Well Log Summaries

## LOCSD Water Data

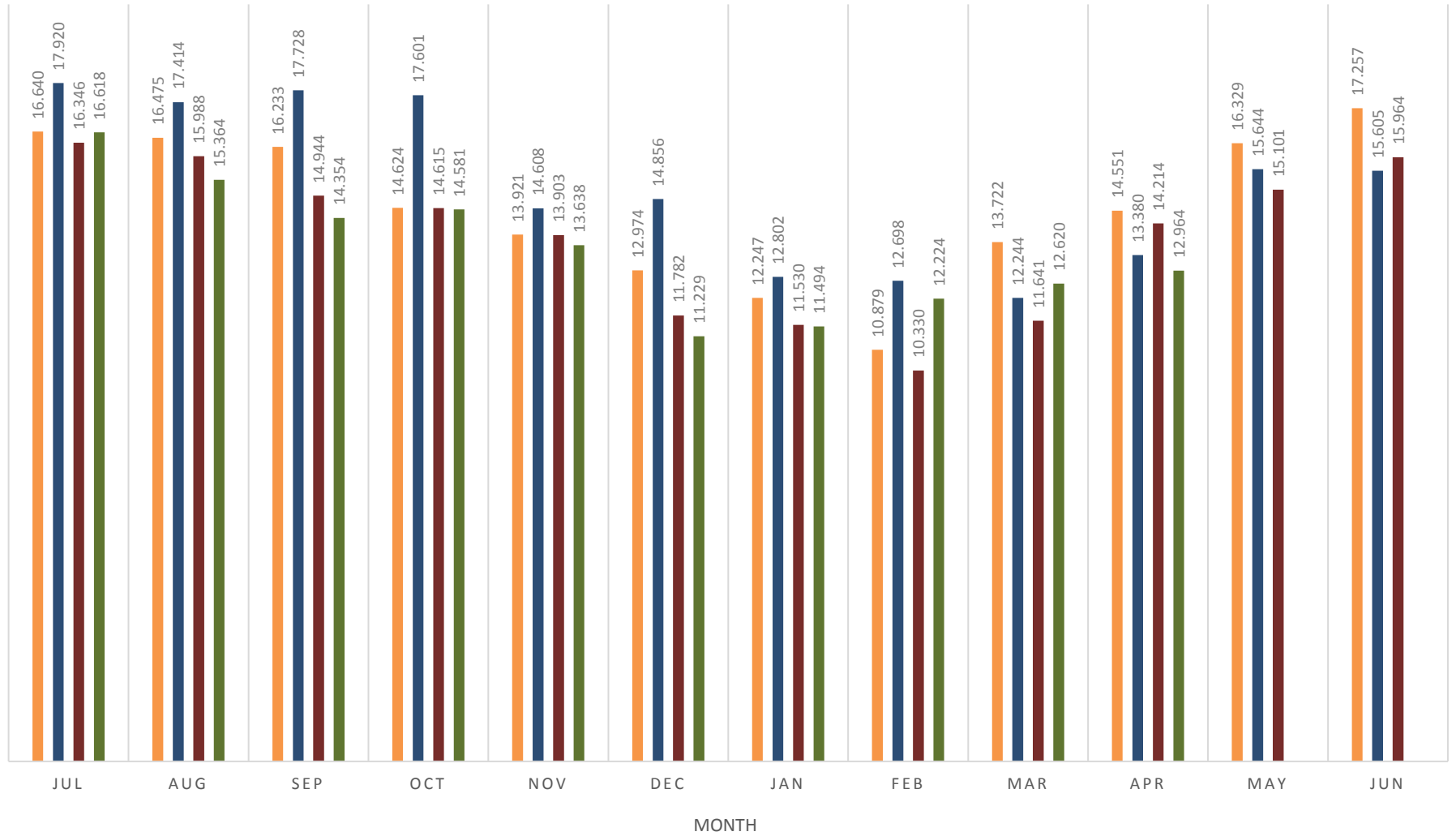
<b>Water Production Data in Million Gallons</b>				
	<b>FY 16-17</b>	<b>FY 17-18</b>	<b>FY 18-19</b>	<b>FY 19-20</b>
Jul	16.640	17.920	16.346	16.618
Aug	16.475	17.414	15.988	15.364
Sep	16.233	17.728	14.944	14.354
Oct	14.624	17.601	14.615	14.581
Nov	13.921	14.608	13.903	13.638
Dec	12.974	14.856	11.782	11.229
Jan	12.247	12.802	11.530	11.494
Feb	10.879	12.698	10.330	12.224
Mar	13.722	12.244	11.641	12.620
Apr	14.551	13.380	14.214	12.964
May	16.329	15.644	15.101	
Jun	17.257	15.605	15.964	
<b>TOTAL</b>	<b>175.852</b>	<b>182.500</b>	<b>166.357</b>	<b>135.087</b>

Consumption is billed for a two month period every month.  
 Revenue is based on gallons billed - not cash received.  
 Production is recorded daily.

## HISTORICAL TO PRESENT LOCS D WELL PRODUCTION DATA

■ FY2016-2017   
 ■ FY2017-2018   
 ■ FY2018-2019   
 ■ FY2019-2020

MILLION GALLONS (MG)



## LOCSD Water Data

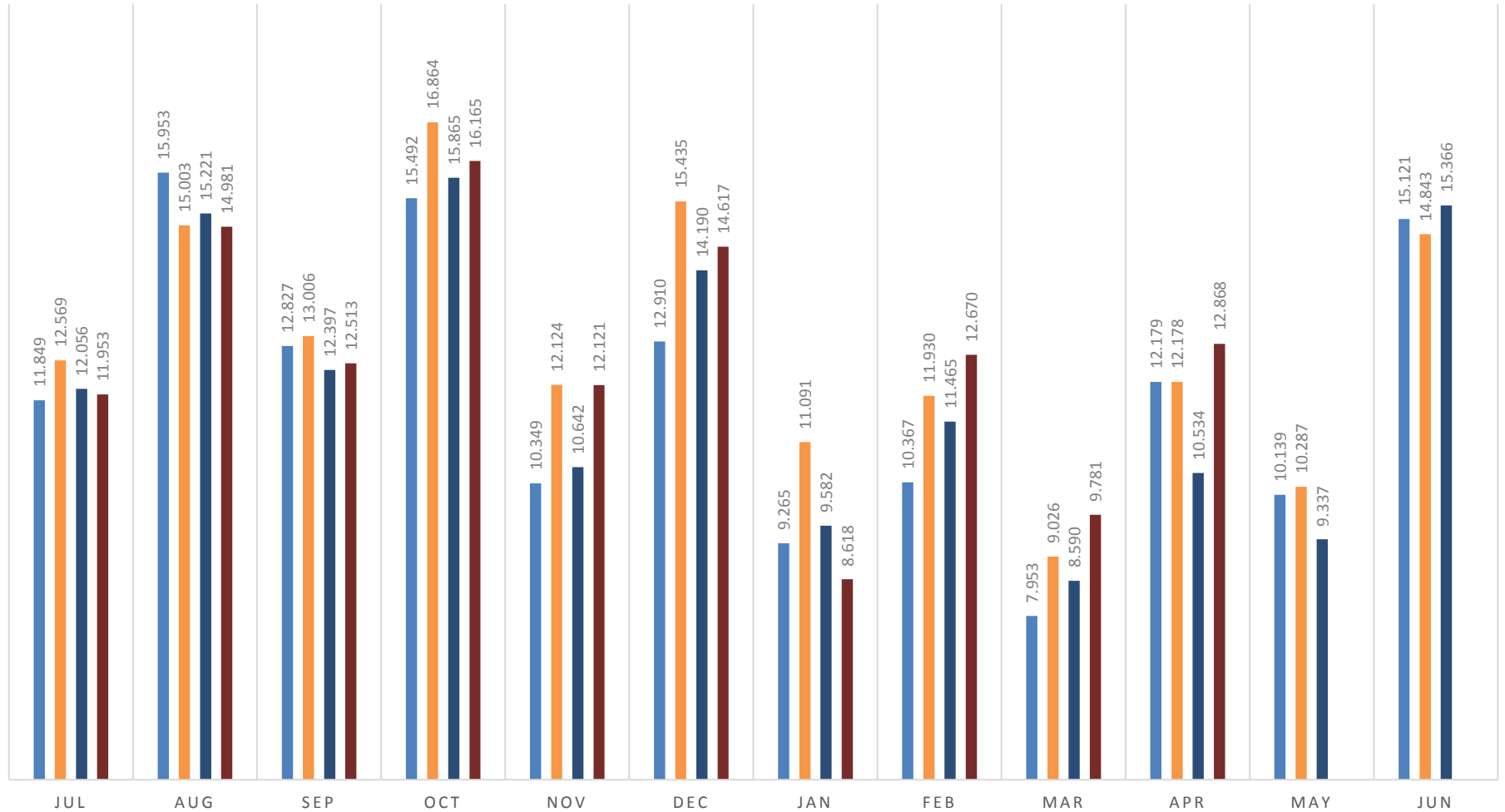
<b>Water Consumption Data in Million Gallons</b>						
<b>% of Service Area</b>	<b>Billing Period</b>		<b>FY 16-17</b>	<b>FY 17-18</b>	<b>FY 18-19</b>	<b>FY 19-20</b>
43	5/11 to 7/10	Jul	11.849	12.569	12.056	11.953
57	6/11 to 8/10	Aug	15.953	15.003	15.221	14.981
43	7/11 to 9/10	Sep	12.827	13.006	12.397	12.513
57	8/11 to 10/10	Oct	15.492	16.864	15.865	16.165
43	9/11 to 11/10	Nov	10.349	12.124	10.642	12.121
57	10/11 to 12/10	Dec	12.910	15.435	14.190	14.617
43	11/11 to 1/10	Jan	9.265	11.091	9.582	8.618
57	12/11 to 2/10	Feb	10.367	11.930	11.465	12.670
43	1/11 to 3/10	Mar	7.953	9.026	8.590	9.781
57	2/11 to 4/10	Apr	12.179	12.178	10.534	12.868
43	3/11 to 5/10	May	10.139	10.287	9.337	
57	4/11 to 6/10	Jun	15.121	14.843	15.366	
<b>TOTAL</b>			<b>144.405</b>	<b>154.356</b>	<b>145.245</b>	<b>126.286</b>

Consumption is billed for a two month period every month.  
 Revenue is based on gallons billed - not cash received.  
 Production is recorded daily.

# HISTORICAL TO PRESENT LOCS D WATER CONSUMPTION BASED ON BILLING

■ FY 16-17   
 ■ FY 17-18   
 ■ FY 18-19   
 ■ FY 19-20

MILLION GALLONS (MG)



MONTH (READING CYCLE)

## LOCSD Water Data

<b>Water Revenue Data</b>						
<b>% of Service Area</b>	<b>Billing Period</b>		<b>FY 16-17</b>	<b>FY 17-18</b>	<b>FY 18-19</b>	<b>FY 19-20</b>
43	5/11 to 7/10	Jul	\$139,017.75	\$168,526.79	\$200,234.85	\$216,577.84
57	6/11 to 8/10	Aug	\$197,721.40	\$221,879.21	\$261,142.75	\$272,102.61
43	7/11 to 9/10	Sep	\$163,852.81	\$207,172.18	\$221,325.52	\$224,312.76
57	8/11 to 10/10	Oct	\$198,170.30	\$267,370.81	\$282,789.11	\$286,960.25
43	9/11 to 11/10	Nov	\$138,130.97	\$197,358.26	\$199,290.08	\$217,727.51
57	10/11 to 12/10	Dec	\$171,281.05	\$249,409.17	\$260,495.65	\$265,928.52
43	11/11 to 1/10	Jan	\$128,300.48	\$182,543.66	\$195,335.09	\$172,429.51
57	12/11 to 2/10	Feb	\$149,015.80	\$206,709.09	\$224,826.24	\$241,461.74
43	1/11 to 3/10	Mar	\$116,824.26	\$159,040.50	\$172,472.09	\$187,483.31
57	2/11 to 4/10	Apr	\$165,317.00	\$208,966.41	\$214,147.00	\$244,449.45
43	3/11 to 5/10	May	\$135,978.00	\$173,254.24	\$181,625.82	
57	4/11 to 6/10	Jun	\$193,625.41	\$241,491.17	\$277,435.92	
		<b>TOTAL</b>	<b>\$1,897,235.23</b>	<b>\$2,483,721.49</b>	<b>\$2,691,120.12</b>	<b>\$2,329,433.50</b>

Consumption is billed for a two month period every month.  
 Revenue is based on gallons billed - not cash received.  
 Production is recorded daily.



## HISTORICAL TO PRESENT LOCS D WATER REVENUE BASED ON BILLING

U. S. DOLLARS \$

