



February 27, 2014

TO: LOCSD Board of Directors  
FROM: Margaret Falkner, Utility Compliance Technician III  
SUBJECT: **Agenda Item 9B – 3/6/2014 Board Meeting**  
Utilities Department Report for January 2014

*MFX*

**President**  
Craig V. Baltimore

**Vice President**  
R. Michael Wright

**Directors**  
Leonard A. Moothart  
Marshall E. Ochylski  
Jon-Erik Storm

**General Manager**  
Kathy A. Kivley

**Interim District Accountant**  
Dale G. Flynn

**Fire Chief**  
Robert Lewin

**Battalion Chief**  
Phill Veneris

**WATER PRODUCTION**

The total production for the month of **January 2014** was approximately **17.8 million gallons (MG)** this equates to an average daily demand of 573,600 gallons. This represents an **increase** in production from last year by approximately **16%**.

Fifty-seven percent of the service area received bills for approximately **16 MG** consumption for the period **December 18, 2013 through February 10, 2014**. This generated **\$137,045** in revenue. This represents approximately 2% decrease in consumption and 3% increase in revenue when compared to last year at this time.

**PRODUCTION AND RUNTIME HOURS BY WELL SITE**

Below are two tables that break down the production by well site and the runtime on the pump motor for the month of January 2014. Last year's totals are included for comparison:

| <b>Production (MG) January</b> | <b>2014</b>    | <b>2013</b>    |
|--------------------------------|----------------|----------------|
| Palisades                      | 5.3300         | 4.9670         |
| 3rd Street                     | 3.1804         | 3.1662         |
| El Moro                        | 4.6202         | 1.1215         |
| 10th Street                    | 3.6954         | 3.4039         |
| South Bay (lower)              | 0.9544         | 2.6090         |
| South Bay (upper)              | 0.0000         | 0.0000         |
| <b>TOTAL:</b>                  | <b>17.7804</b> | <b>15.2676</b> |

| <b>Runtime (Hours) December</b> | <b>2014</b>   | <b>2013</b>   |
|---------------------------------|---------------|---------------|
| Palisades                       | 154.6         | 105.5         |
| 3rd St                          | 733.7         | 736.8         |
| El Moro                         | 215.9         | 51.1          |
| 10th St                         | 198.0         | 177.0         |
| South Bay (lower)               | 734.9         | 739.9         |
| South Bay (upper)               | 0.0           | 0.0           |
| <b>TOTAL:</b>                   | <b>2037.1</b> | <b>1810.3</b> |

**Mailing Address:**  
P.O. Box 6064  
Los Osos, CA 93412

**Offices:**  
2122 9<sup>th</sup> Street, Suite 102  
Los Osos, CA 93402

**Phone:** 805/528-9370  
**FAX:** 805/528-9377

www.locsd.org

Please refer to the attached January 2014 "Well Log Summary" for more data regarding production, runtime hours, chemical usage, soundings, and alarms.

### **CALIFORNIA STATE OF EMERGENCY DUE TO DROUGHT**

On January 17, 2014, Governor Brown declared an emergency due to drought. He has called on all Californians to restrain water use. Attached to this report are graphs with tables which provide information on the District's water well depths.

### **UTILITIES DEPARTMENT OPERATIONS AND MAINTENANCE FOR WATER SYSTEM**

During the month of January 2014, crew provided weekly water sampling for water permit compliance, read water meters for billing, and performed monthly well soundings. In addition to these duties, they worked on the valve exercising program, upgraded service lines and meters on several residents, worked on the chlorine tank at 8<sup>th</sup> Street, responded to leaks reported by the wastewater contractor and reinstalled the cage at the South Bay upper aquifer well site. Staff submitted the monthly monitoring report to the California Department of Public Health (CDPH) for January 2014 with no violations noted.

### **DRAINAGE WDID # 3 40M2000133**

Crews performed maintenance on the drainage lines at 6<sup>th</sup> & El Moro. The General National Pollutant Discharge Elimination System (NPDES) Permit for storm water discharges for small Municipal Separate Storm Sewer Systems (MS4) is effective July 1, 2013. Our first annual report will be due in June 2014.

### **BAYRIDGE ESTATES WDID# 3 401027001**

Two tanks and a manhole were pumped at the Bayridge facility early in January 2014. Crews continue monitoring and groundskeeping. Once connected to the Los Osos Wastewater Project, the District crews will no longer maintain the septic system.

### **VISTA DE ORO WDID# 3 401024001**

Crews had to snake the system in January 2014. Crews continue monitoring and groundskeeping. Once connected to the Los Osos Wastewater Project, the District crews will no longer maintain the septic system.

### **RECOMMENDATION**

Staff encourages the Board to ask any questions they may have with regard to the aforementioned report or any other related item that may be listed separately as an agenda item.

Attachments



| <b>JANUARY 2014</b>                                    | 8th St./ EI Moro Well | 3rd St./ Bayside Well | 10th St. Well | South Bay Well | South Bay Upper Well | Palisades Well | All Wells TOTAL | Last Years TOTAL | Percent% Differential |
|--------------------------------------------------------|-----------------------|-----------------------|---------------|----------------|----------------------|----------------|-----------------|------------------|-----------------------|
| Total Gallons Produced, Mgal                           | 4.6202                | 3.1804                | 3.6954        | 0.9544         | 0.0000               | 5.3300         | 17.7804         | 15.2676          | 16.46%                |
| Average Daily Flow, Mgal                               |                       |                       |               |                |                      |                | 0.5736          | 0.4925           | 16.46%                |
| Total Gallons to Waste ( Filter Backwash ), Mgal       | 0.0000                |                       |               | 0.0000         | 0.0000               |                | 0.0000          | 0.0766           | -100.00%              |
| Total Gallons to Waste ( System Flushing ), Mgal       |                       |                       |               |                |                      |                | 0.0000          | 0                | 0.00%                 |
| Distribution System Losses ( Water Line Breaks ), Mgal |                       |                       |               |                |                      |                | 0.0030          | 0.0406           | -92.61%               |
| Total Gallons Adjusted, Mgal                           | 4.6202                |                       |               | 0.9544         |                      |                | 17.7774         | 15.1504          | 17.34%                |
| Pump Runtime, total hours                              | 215.9                 | 733.7                 | 198.0         | 734.9          |                      | 154.6          | 2037.1          | 1810.3           | 11.13%                |
| Daily Avg. Runtime, hours/day                          | 7.0                   | 23.7                  | 6.4           | 23.7           |                      | 5.0            |                 |                  |                       |
| Energy Used, kWatts                                    | 8670                  | 5836                  | 9060          | 7729           |                      | 12242          | 43537           | 33706            | 29.17%                |
| Eff. Ratio, kWatts/hr                                  | 40.16                 | 7.95                  | 45.76         | 10.52          |                      | 79.18          |                 |                  |                       |
| Chlorine Used, total gallons                           | 59.3                  | 59.3                  | 23.2          | 19.2           |                      | 46.6           | 207.7           | 110.4            | 88.09%                |
| Aqua Mag, pounds                                       | 84.6                  |                       | 33.8          | 0.0            |                      | 37.4           | 155.8           | 61.2             | 154.58%               |
| Static water level, ft.                                | 34.20                 | 8.40                  | 156.20        | 122.10         | 0.00                 | 100.40         |                 |                  |                       |
| Pump water level, ft.                                  | 148.50                | 52.80                 | 245.50        | 155.70         | 0.00                 | 256.70         |                 |                  |                       |
| Draw-down level, ft.                                   | 114.30                | 44.40                 | 89.30         | 33.60          | 0.00                 | 156.30         |                 |                  |                       |
| Gallons per minute                                     | 360                   | 71                    | 332           | 0              | 0                    | 548            |                 |                  |                       |
| Pressure, psi                                          | 92                    | 82                    | 34            | 62             | 0                    | 80             |                 |                  |                       |
| <b>Alarm Events</b>                                    |                       |                       |               |                |                      |                |                 |                  |                       |
| YES / NO                                               | NO                    | NO                    | YES           | NO             | NO                   | YES            |                 |                  |                       |
| <b>Type of event</b>                                   |                       |                       |               |                |                      |                |                 |                  |                       |
| Well Failure                                           |                       |                       |               |                |                      |                | 0               |                  |                       |
| Power Failure                                          |                       |                       |               |                |                      |                | 0               |                  |                       |
| Low Chlorine                                           |                       |                       | 1             |                |                      | 1              | 2               |                  |                       |
| Other:                                                 |                       |                       | 1             |                |                      | 1              | 2               |                  |                       |
| <b>Total number alarms</b>                             | 0                     | 0                     | 2             | 0              |                      | 2              | 4               | 6                | -33.33%               |

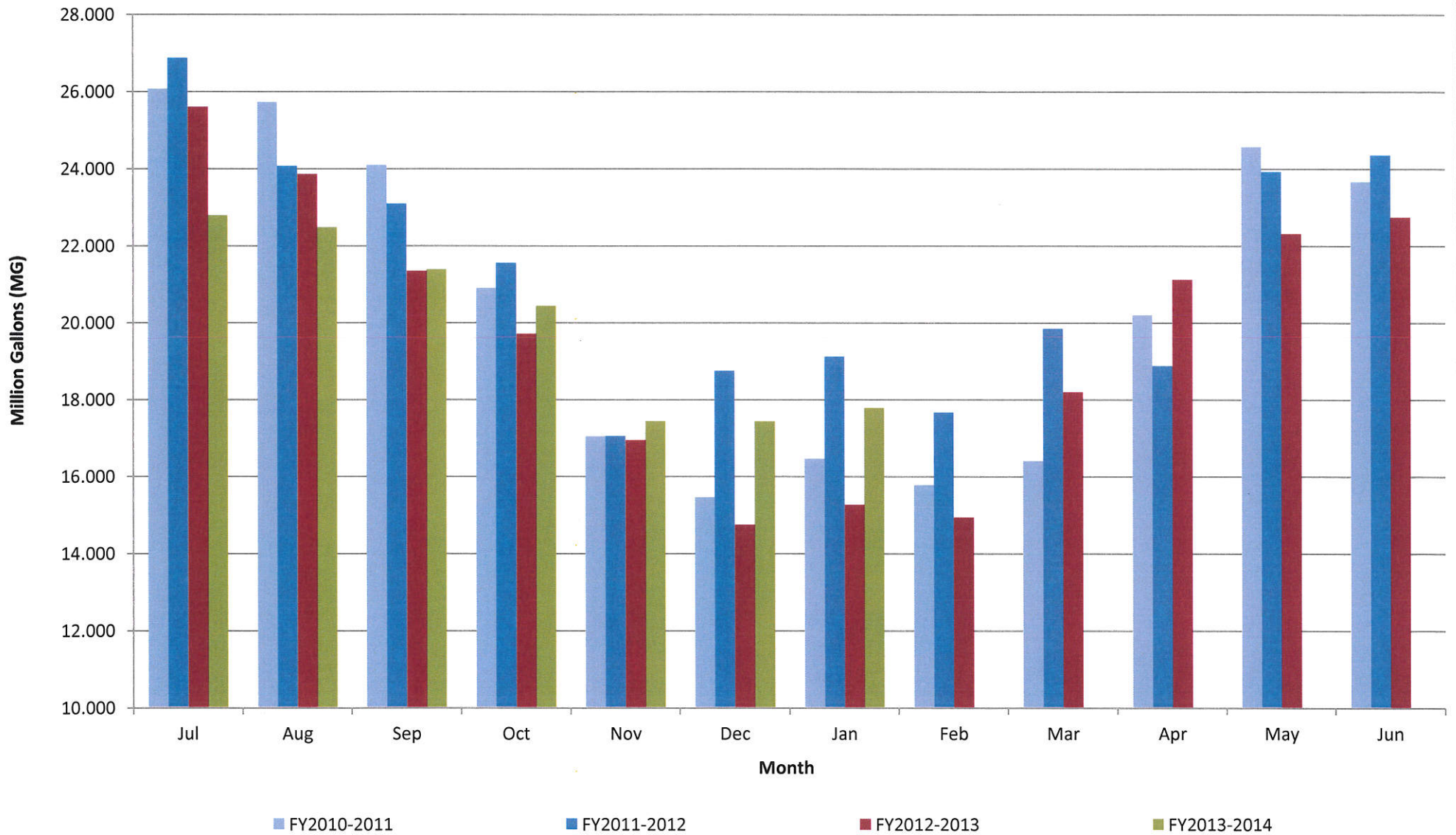
## LOCSO Water Data

### Water Production Data in Million Gallons

|              | <b>FY 10-11</b> | <b>FY 11-12</b> | <b>FY 12-13</b> | <b>FY 13-14</b> |
|--------------|-----------------|-----------------|-----------------|-----------------|
| Jul          | 26.066          | 26.868          | 25.600          | 22.779          |
| Aug          | 25.724          | 24.064          | 23.862          | 22.470          |
| Sep          | 24.087          | 23.086          | 21.340          | 21.380          |
| Oct          | 20.895          | 21.543          | 19.708          | 20.431          |
| Nov          | 17.042          | 17.046          | 16.939          | 17.436          |
| Dec          | 15.460          | 18.745          | 14.747          | 17.431          |
| Jan          | 16.463          | 19.117          | 15.268          | 17.780          |
| Feb          | 15.783          | 17.662          | 14.940          |                 |
| Mar          | 16.402          | 19.843          | 18.193          |                 |
| Apr          | 20.195          | 18.873          | 21.118          |                 |
| May          | 24.563          | 23.914          | 22.310          |                 |
| Jun          | 23.660          | 24.347          | 22.743          |                 |
| <b>TOTAL</b> | <b>246.338</b>  | <b>255.107</b>  | <b>236.767</b>  | <b>139.707</b>  |

Consumption is billed for a two month period every month.  
Revenue is based on gallons billed - not cash received.  
Production is recorded daily.

## Historical to Present LOCS D Well Production Data



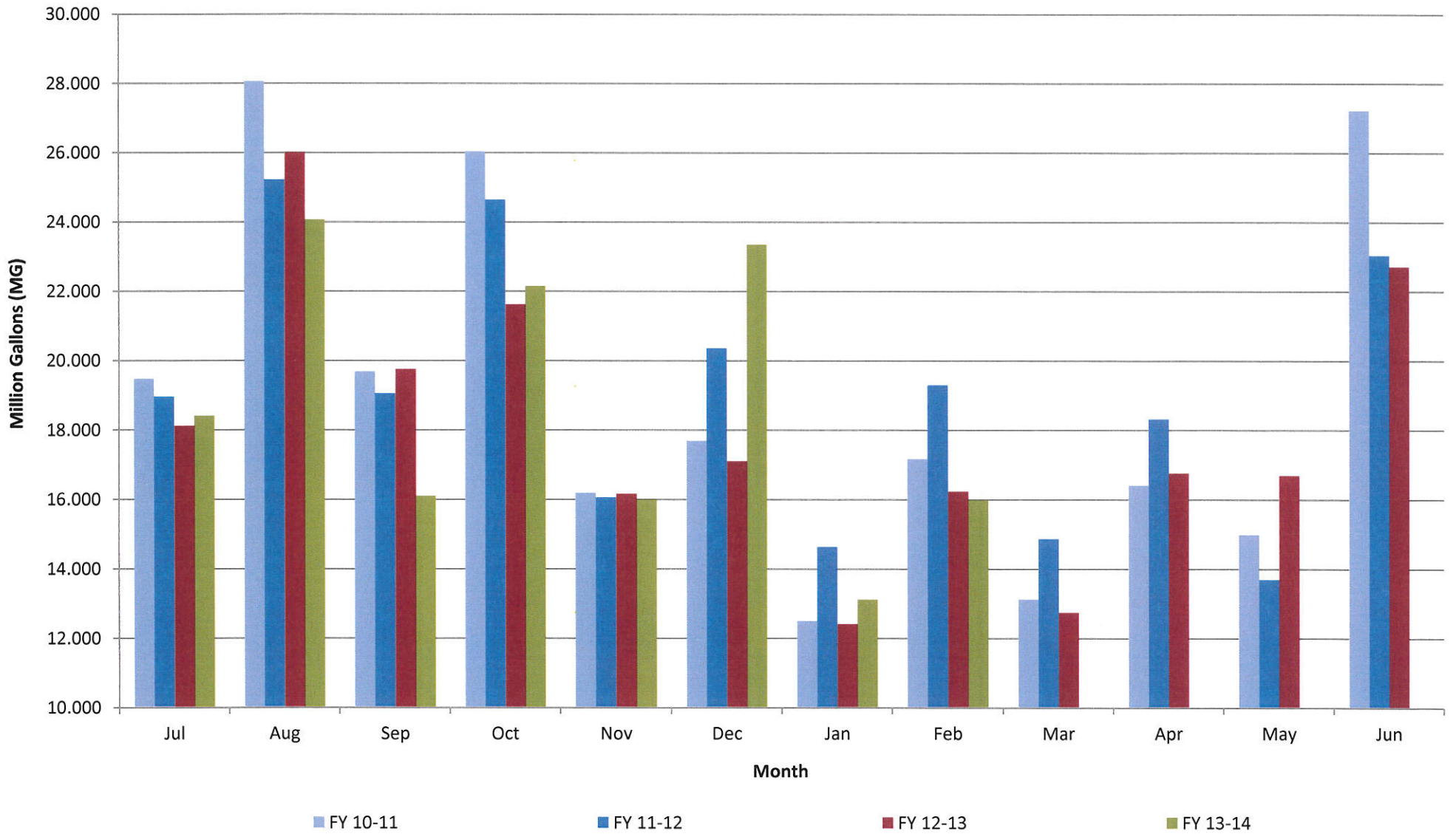


## LOCSO Water Data

| <b>Water Consumption Data in Million Gallons</b> |                       |              |                 |                 |                 |                 |
|--------------------------------------------------|-----------------------|--------------|-----------------|-----------------|-----------------|-----------------|
| <b>% of Service Area</b>                         | <b>Billing Period</b> |              | <b>FY 10-11</b> | <b>FY 11-12</b> | <b>FY 12-13</b> | <b>FY 13-14</b> |
| 43                                               | 5/11 to 7/10          | Jul          | 19.463          | 18.950          | 18.110          | 18.402          |
| 57                                               | 6/11 to 8/10          | Aug          | 28.050          | 25.210          | 26.006          | 24.061          |
| 43                                               | 7/11 to 9/10          | Sep          | 19.674          | 19.044          | 19.748          | 16.087          |
| 57                                               | 8/11 to 10/10         | Oct          | 26.027          | 24.636          | 21.617          | 22.142          |
| 43                                               | 9/11 to 11/10         | Nov          | 16.179          | 16.048          | 16.155          | 15.994          |
| 57                                               | 10/11 to 12/10        | Dec          | 17.683          | 20.355          | 17.096          | 23.342          |
| 43                                               | 11/11 to 1/10         | Jan          | 12.485          | 14.623          | 12.406          | 13.105          |
| 57                                               | 12/11 to 2/10         | Feb          | 17.161          | 19.294          | 16.223          | 15.969          |
| 43                                               | 1/11 to 3/10          | Mar          | 13.109          | 14.858          | 12.737          |                 |
| 57                                               | 2/11 to 4/10          | Apr          | 16.396          | 18.313          | 16.756          |                 |
| 43                                               | 3/11 to 5/10          | May          | 14.975          | 13.685          | 16.686          |                 |
| 57                                               | 4/11 to 6/10          | Jun          | 27.212          | 23.029          | 22.709          |                 |
|                                                  |                       | <b>TOTAL</b> | <b>228.414</b>  | <b>228.044</b>  | <b>216.249</b>  | <b>149.102</b>  |

Consumption is billed for a two month period every month.  
 Revenue is based on gallons billed - not cash received.  
 Production is recorded daily.

## Historical to Present LOCSD Water Consumption



## LOCSD Water Data

| Water Revenue Data |                |              |                       |                       |                       |                       |
|--------------------|----------------|--------------|-----------------------|-----------------------|-----------------------|-----------------------|
| % of Service Area  | Billing Period |              | FY 10-11              | FY 11-12              | FY 12-13              | FY 13-14              |
| 43                 | 5/11 to 7/10   | Jul          | \$125,133.24          | \$129,524.46          | \$127,737.70          | \$150,401.90          |
| 57                 | 6/11 to 8/10   | Aug          | \$174,057.07          | \$167,062.07          | \$175,798.70          | \$147,246.54          |
| 43                 | 7/11 to 9/10   | Sep          | \$134,756.85          | \$134,650.62          | \$139,628.43          | \$145,135.28          |
| 57                 | 8/11 to 10/10  | Oct          | \$177,362.45          | \$165,624.63          | \$163,698.98          | \$187,431.78          |
| 43                 | 9/11 to 11/10  | Nov          | \$112,171.55          | \$113,044.46          | \$128,918.55          | \$143,029.03          |
| 57                 | 10/11 to 12/10 | Dec          | \$126,236.55          | \$141,492.06          | \$142,026.32          | \$206,187.91          |
| 43                 | 11/11 to 1/10  | Jan          | \$90,676.15           | \$105,371.44          | \$104,328.08          | \$120,500.40          |
| 57                 | 12/11 to 2/10  | Feb          | \$119,946.90          | \$134,692.14          | \$132,433.64          | \$137,045.65          |
| 43                 | 1/11 to 3/10   | Mar          | \$94,298.10           | \$105,313.67          | \$95,487.96           |                       |
| 57                 | 2/11 to 4/10   | Apr          | \$116,335.40          | \$128,368.97          | \$135,947.81          |                       |
| 43                 | 3/11 to 5/10   | May          | \$96,549.67           | \$99,287.66           | \$133,939.00          |                       |
| 57                 | 4/11 to 6/10   | Jun          | \$177,009.32          | \$156,744.35          | \$172,139.37          |                       |
|                    |                | <b>TOTAL</b> | <b>\$1,544,533.25</b> | <b>\$1,581,176.53</b> | <b>\$1,652,084.54</b> | <b>\$1,236,978.49</b> |

Consumption is billed for a two month period every month.  
 Revenue is based on gallons billed - not cash received.  
 Production is recorded daily.



## Historical to Present LOCS D Water Revenue

