



March 17, 2021

**TO:** Utilities Advisory Committee

**FROM:** Margaret Falkner, Utility Systems Manager  
Alicia Zuniga, Utility Billing Specialist

**SUBJECT:** **Agenda Item 4- 03/17/2021 UAC Meeting**  
**Utilities Department Report for February 2021**

**President**  
Christine M. Womack

**Vice President**  
Matthew D. Fourcroy

**Directors**  
Charles L. Cesena  
Troy C. Gatchell  
Marshall E. Ochylski

**General Manager**  
Ron Munds

**District Accountant**  
Robert Stilts, CPA

**Unit Chief**  
Scott M. Jalbert

**Battalion Chief**  
Paul Provence

**Mailing Address:**  
P.O. Box 6064  
Los Osos, CA 93412

**Offices:**  
2122 9<sup>th</sup> Street, Suite 110  
Los Osos, CA 93402

**Phone:** 805/528-9370  
**FAX:** 805/528-9377

www.losososcsl.org

**WATER PRODUCTION INFORMATION**

The total production for the month of **February 2021** was approximately **10.7 million gallons (MG)** this equates to an average daily demand of **358,400 gallons**. This represents approximately a **12% decrease** in production from last year.

Using the state's formula to calculate residential usage per capita per day, for the month of **February 2021** our residential customers used **51.4** gallons per person per day, a decrease from 56.4 gallons per person per day in February 2020.

**PRODUCTION AND RUNTIME HOURS BY WELL SITE**

The following tables break down the production by well site and runtime on the pump motors for the month of **February 2021**. Totals for last year are included for comparison:

<b>Production (MG) February</b>	<b>2021</b>	<b>2020</b>
Palisades	1.6606	2.9315
3rd St	2.5731	0.0000
8th Street/El Moro	2.9552	4.6847
10th St	0.0000	4.0403
South Bay (lower)	3.2065	0.0000
South Bay (upper)	0.3570	0.5677
<b>Total:</b>	<b>10.7524</b>	<b>12.2242</b>

<b>Runtime (Hours) February</b>	<b>2021</b>	<b>2020</b>
Palisades	79.9	142.0
3rd St	617.3	0.1
8th Street/El Moro	163.0	255.4
10th St	58.3	258.8
South Bay (lower)	555.1	0.0
South Bay (upper)	158.2	335.5
<b>Total:</b>	<b>1631.8</b>	<b>991.8</b>

**WATER BILLING INFORMATION**

FY '19-'20			FY '20-'21		
Month	Gallons	Revenue	Month	Gallons	Revenue
Jul	11,953,040	\$216,577.84	Jul	12,119,096	\$217,906.44
Aug	14,980,944	\$272,102.61	Aug	18,097,860	\$313,290.49
Sep	12,585,100	\$224,312.76	Sep	13,407,900	\$235,232.34
Oct	16,165,028	\$286,960.25	Oct	15,497,064	\$277,149.49
Nov	12,121,340	\$217,727.51	Nov	12,240,272	\$219,526.66
Dec	14,617,416	\$265,928.52	Dec	15,013,108	\$270,072.58
Jan	8,617,708	\$172,429.51	Jan	10,555,776	\$196,582.18
Feb	12,669,624	\$241,461.74	Feb	13,054,096	\$243,860.92
Mar	9,780,848	\$187,483.31	Mar		
Apr	12,867,844	\$244,449.45	Apr		
May	10,992,608	\$202,963.74	May		
Jun	16,105,188	\$286,586.98	Jun		

**UTILITIES DEPARTMENT OPERATIONS AND MAINTENANCE**

During the month of February 2021, the Utilities crew performed all required operations and maintenance tasks. The various tasks and facilities maintained are:

**WATER DISTRIBUTION AND TREATMENT**

- Daily, weekly, and monthly water quality sampling, analysis and reporting, for all well sites and throughout the distribution system.
- Monthly meter reading.
- Grounds keeping at well and drainage sites.
- CIP project tracking
- 10<sup>th</sup> Street Well rehabilitation coordination and support

**DRAINAGE WDID # 3 40M2000133**

The District continues to operate and comply with the General National Pollutant Discharge Elimination System (NPDES) Permit for storm water discharges for small Municipal Separate Storm Sewer Systems (MS4).

Storm water pollution prevention measures are available on the District’s Drainage web page:

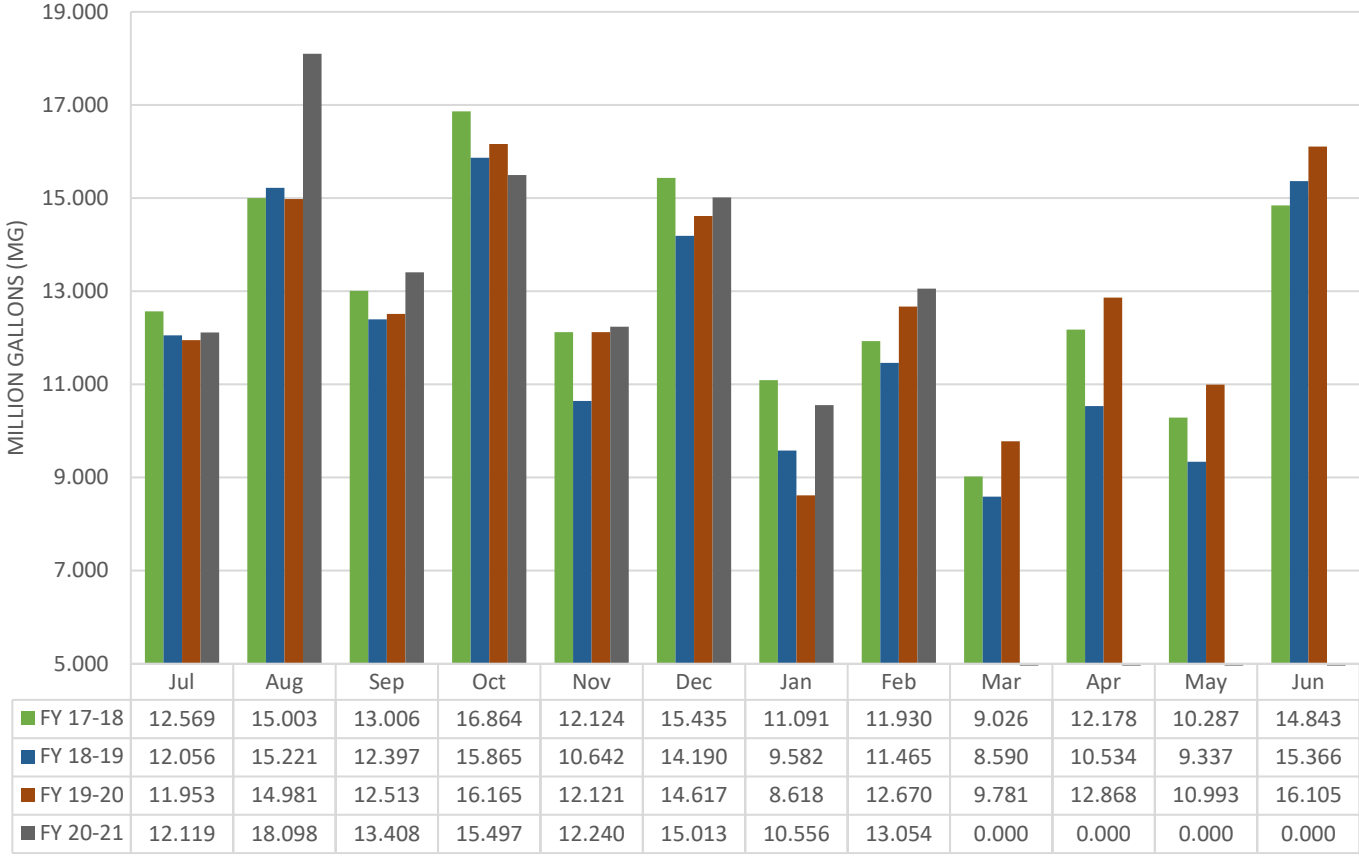
<http://www.losososcsd.org/drainage>

**RAINFALL TOTALS**

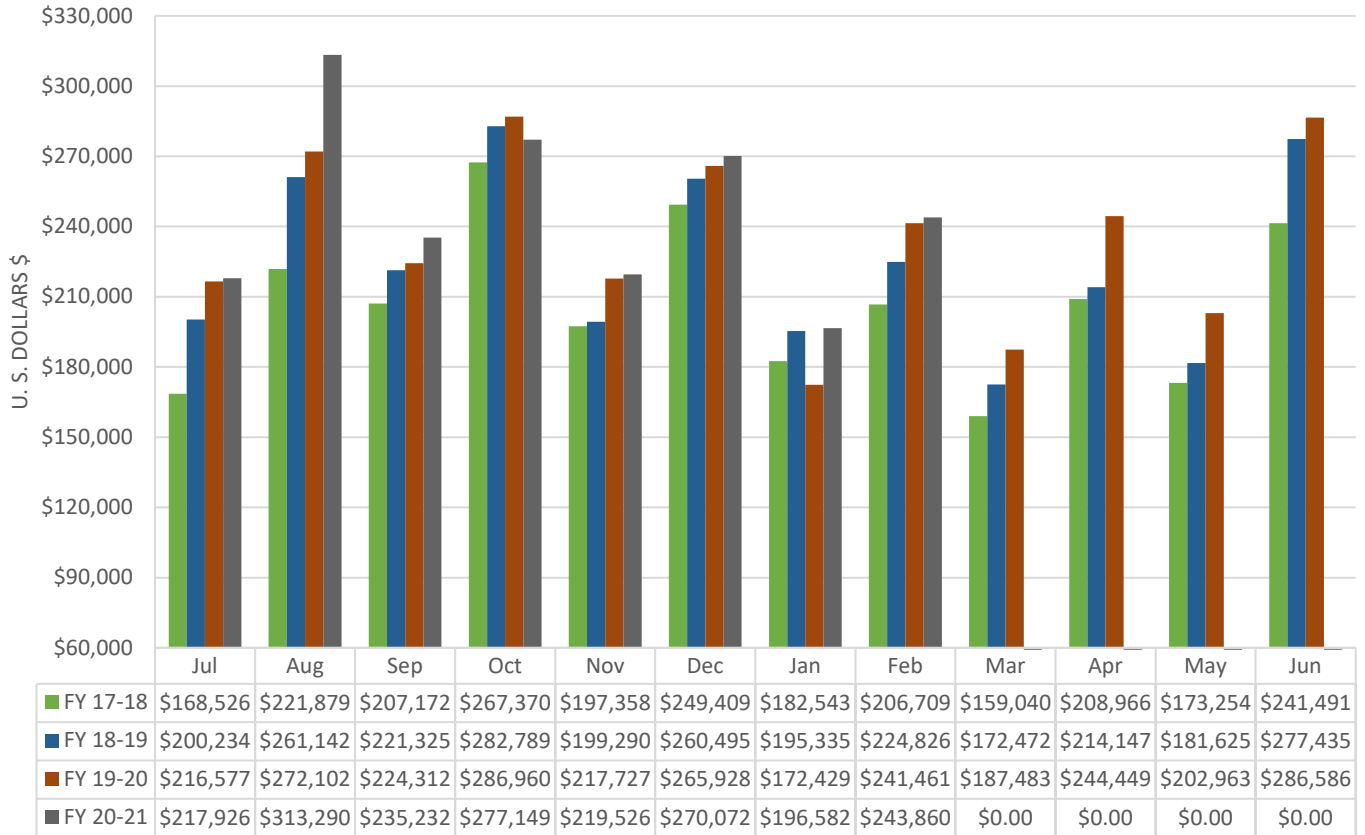
The County has a link to rain and reservoir information: <http://wr.slocountywater.org/home.php> below is a table of historical rainfall totals from the Los Osos Landfill rain monitor. This has been arranged to coincide with our Water Shortage Contingency Plan Climate Trigger which is based on rainfall measured from April 1<sup>st</sup> through March 31<sup>st</sup>.

Station Name and Number		Los Osos Landfill # 727											
	*** All units are in inches ***												
Water Year	APR	MAY	JUN	JUL	AUG	SEP	OCT	NOV	DEC	JAN	FEB	MAR	Total
2020-2021	1.89	0.12	0.04	0.00	0.04	0.00	0.00	0.00	0.04	9.93	0.20		<b>12.26</b>
2019-2020	0.08	1.53	0.00	0.00	0.08	0.00	0.00	2.13	4.37	0.20	0.04	4.80	<b>13.23</b>
2018-2019	0.79	0.00	0.00	0.00	0.00	0.00	0.43	3.75	1.14	6.14	6.90	3.94	<b>23.09</b>
2017 - 2018	0.55	0.27	0.00	0.00	0.00	0.16	0.16	0.47	0.12	3.78	0.16	7.95	<b>13.62</b>
2016 - 2017	0.20	0.00	0.00	0.00	0.00	0.00	1.65	2.76	3.39	9.02	7.65	1.34	<b>26.01</b>

## HISTORICAL TO PRESENT LOCS D WATER CONSUMPTION BASED ON BILLING



## HISTORICAL TO PRESENT LOCS D WATER REVENUE BASED ON BILLING



## HISTORICAL TO PRESENT LOCS D WELL PRODUCTION DATA

