



May 7, 2020

TO: LOCSD Board of Directors

FROM: Jose Acosta, Utility Systems Manager
Frank Asuncion, Water Resource Crew Leader
Alicia Zuniga, Utility Billing Specialist

SUBJECT: **Agenda Item 4B- 5/7/2020 Board Meeting**
Utilities Department Report for **March 2020**

President
Charles L. Cesena

Vice President
Christine M. Womack

Directors
Matthew D. Fourcroy
Vicki L. Milledge
Marshall E. Ochylski

General Manager
Ron Munds

District Accountant
Robert Stilts, CPA

Unit Chief
Scott M. Jalbert

Battalion Chief
Paul Provence

Mailing Address:
P.O. Box 6064
Los Osos, CA 93412

Offices:
2122 9th Street, Suite 110
Los Osos, CA 93402

Phone: 805/528-9370
FAX: 805/528-9377

www.losososcsd.org

WATER PRODUCTION INFORMATION

The total production for the month of **March 2020** was approximately **12.6 million gallons (MG)** this equates to an average daily demand of **407,100** gallons. This represents an **increase** in production from last year by approximately **8.41%**.

Using the state's formula to calculate residential usage per capita per day, for the month of **March 2020** our residential customers used 54.5 gallons per person per day, an increase from 50.2 gallons per person per day in March 2019.

PRODUCTION AND RUNTIME HOURS BY WELL SITE

The following tables break down the production by well site and runtime on the pump motors for the month of **March 2020**. Totals for last year are included for comparison:

Production (MG) March	2020	2019	% Change
Palisades	3.22	2.27	29.5
3 rd Street/Bayside	0	0	0
8 th Street/EI Moro	4.64	4.62	0.4
10 th Street	4.20	4.19	0.2
South Bay (lower)	0.00	0.00	0.0
South Bay (upper)	0.57	0.56	1.8
TOTAL:	12.63	11.64	

Runtime (Hours) February	2020	2019
Palisades	155.9	108.6
3 rd Street/Bayside	0.3	0.5
8 th Street/EI Moro	252.4	229.0
10 th Street	268.9	237.9
South Bay (lower)	0.0	0.0
South Bay (upper)	337.7	330.7
TOTAL:	1015.2	906.7

WATER BILLING INFORMATION

Forty-three percent of the service area received bills for approximately **9.78 MG** consumption for the period of January 10, 2020 through March 10, 2020. This generated approximately **\$187,483.31** in revenue.

UTILITIES DEPARTMENT OPERATIONS AND MAINTENANCE

During the month of March 2020, the Utilities crew performed all required operations and maintenance tasks. The various tasks and facilities maintained are:

WATER DISTRIBUTION AND TREATMENT

- Daily, weekly, and monthly water quality sampling, analysis and reporting, for all well sites and throughout the distribution system.
- Monthly meter reading.
- Service line upgrade at 1919-1921 9th Street.
- Completed larger meter replacement/rebuild program, completed approximately 15 meters.
- Completed annual valve exercising program.
- Grounds keeping at well and drainage sites.

DRAINAGE WDID # 3 40M2000133

The District continue to operate and comply with the General National Pollutant Discharge Elimination System (NPDES) Permit for storm water discharges for small Municipal Separate Storm Sewer Systems (MS4). Storm water pollution prevention measures are available on the District's Drainage web page: <http://www.lososocsd.org/drainage-e293b4b>

RAINFALL TOTALS

The County has a link to rain and reservoir information: <http://wr.slocountywater.org/home.php> below is a table of historical rainfall totals from the Los Osos Landfill rain monitor. This has been arranged to coincide with our Water Shortage Contingency Plan Climate Trigger which is based on rainfall measured from April 1st through March 31st.

Station Name and Number													Los Osos Landfill # 727
*** All units are in inches ***													
Water Year	APR	MAY	JUN	JUL	AUG	SEP	OCT	NOV	DEC	JAN	FEB	MAR	Total
2019-2020	0.08	1.53	0.00	0.00	0.08	0.00	0.00	2.13	4.37	0.20	0.04	4.80	13.23
2018-2019	0.79	0.00	0.00	0.00	0.00	0.00	0.43	3.75	1.14	6.14	6.90	3.94	23.09
2017 - 2018	0.55	0.27	0.00	0.00	0.00	0.16	0.16	0.47	0.12	3.78	0.16	7.95	13.62
2016 - 2017	0.20	0.00	0.00	0.00	0.00	0.00	1.65	2.76	3.39	9.02	7.65	1.34	26.01
2015 - 2016	0.67	0.12	0.00	1.93	0.00	0.08	0.08	1.26	1.85	5.04	0.86	4.85	16.74
2014 - 2015	0.71	0.00	0.00	0.00	0.00	0.00	0.00	0.28	5.20	0.08	0.91	0.43	7.61
2013 - 2014	0.31	0.12	0.04	0.00	0.00	0.00	0.24	0.28	0.12	0.00	4.06	1.42	6.59
2012 - 2013	2.24	0.00	0.00	0.00	0.00	0.00	1.18	1.69	2.64	1.02	0.67	0.43	9.87

RECOMMENDATION

Staff encourages the Board to ask any questions they may have with regard to the aforementioned report or any other related item that may be listed separately as an agenda item.

Attachments

March 2020	8th St./ El Moro Well	3rd St./ Bayside Well	10th St. Well	South Bay Well	South Bay Upper Well	Palisades Well	All Wells TOTAL	Last Years TOTAL	Percent% Differential
Total Gallons Produced, Mgal	4.6360	0.0000	4.1977	0.0008	0.5700	3.2158	12.6203	11.6414	8.41%
Average Daily Flow, Mgal							0.4071	0.3755	
Total Gallons to Waste (Filter Backwash), Mgal	0.0000			0.0000	0.0000		0.0000	0	
Total Gallons to Waste (System Flushing), Mgal							0.0000	0	
Distribution System Losses (Water Line Breaks), Mgal							0.0000	0	
Total Gallons Adjusted, Mgal	4.6360			0.0008			12.6203	11.6414	8.41%
Pump Runtime, total hours	252.4	0.3	268.9	0.0	337.7	155.9	1015.2	906.7	11.97%
Daily Avg. Runtime, hours/day	8.1	0.0	8.7	0.0	10.9	5.0			
Energy Used, kWatts	10439	35	11409	2104		5671	29658	25640	15.67%
Eff. Ratio, kWatts/hr	41.36	116.67	42.43	#DIV/0!		36.38			
Chlorine Used, total gallons	75.9	0.0	38.1	9.5		23.7	147.3	109	35.14%
Aqua Mag, pounds	63.4		52.0	0.0		23.2	138.6	94.2	47.13%
Static water level, ft.	33.70	0.00	153.10	107.20	90.60	94.00			
Pump water level, ft.	149.70	N/A	290.00	N/A	111.50	185.50			
Draw-down level, ft.	116.00	N/A	136.90	N/A	20.90	91.50			
Gallons per minute	308	0	257	34	34	250			
Pressure, psi	94	#VALUE!	56	0	61	61			

LOCSD Water Data

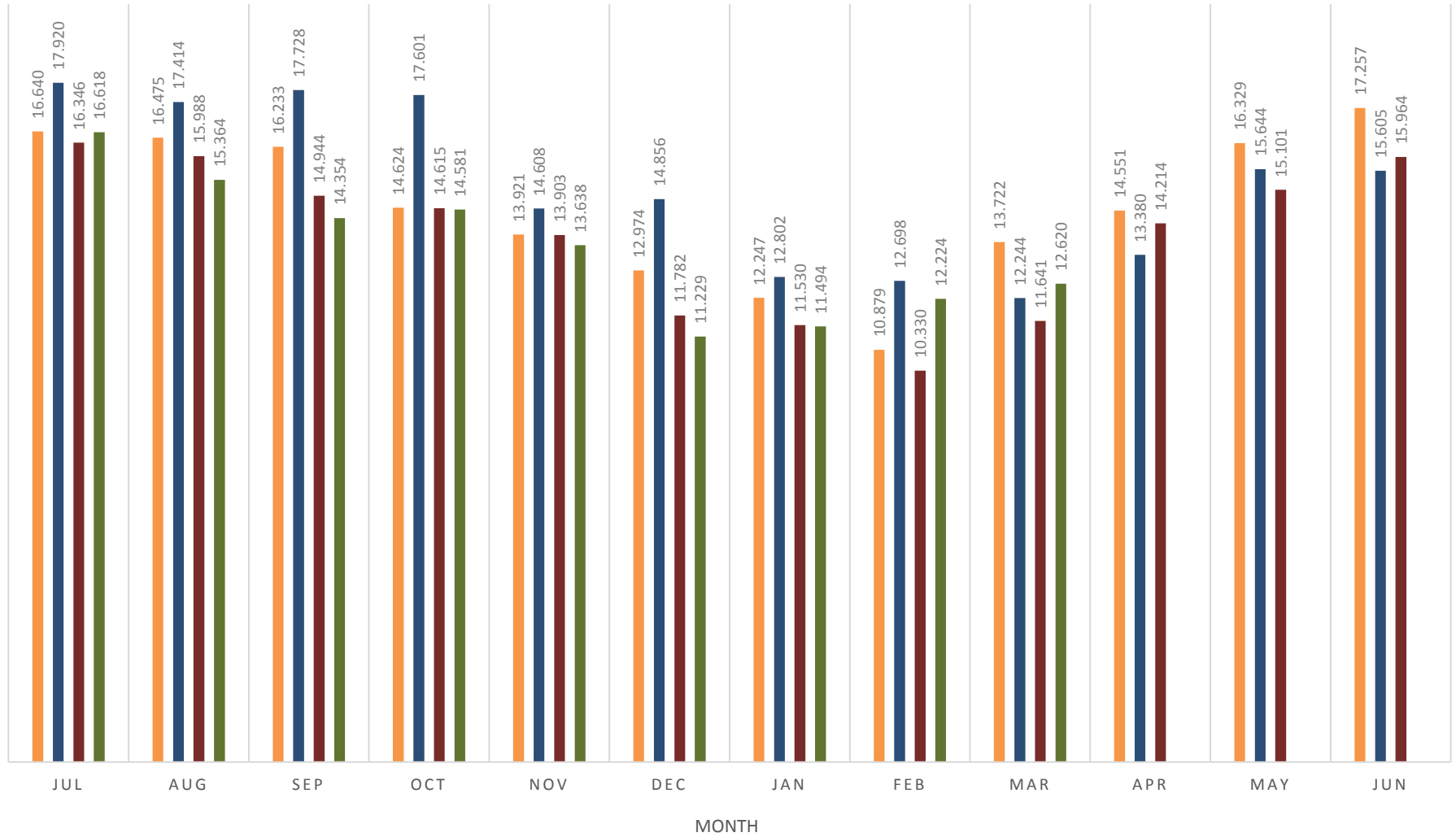
Water Production Data in Million Gallons				
	FY 16-17	FY 17-18	FY 18-19	FY 19-20
Jul	16.640	17.920	16.346	16.618
Aug	16.475	17.414	15.988	15.364
Sep	16.233	17.728	14.944	14.354
Oct	14.624	17.601	14.615	14.581
Nov	13.921	14.608	13.903	13.638
Dec	12.974	14.856	11.782	11.229
Jan	12.247	12.802	11.530	11.494
Feb	10.879	12.698	10.330	12.224
Mar	13.722	12.244	11.641	12.620
Apr	14.551	13.380	14.214	
May	16.329	15.644	15.101	
Jun	17.257	15.605	15.964	
TOTAL	175.852	182.500	166.357	122.122

Consumption is billed for a two month period every month.
 Revenue is based on gallons billed - not cash received.
 Production is recorded daily.

HISTORICAL TO PRESENT LOCS D WELL PRODUCTION DATA

■ FY2016-2017
 ■ FY2017-2018
 ■ FY2018-2019
 ■ FY2019-2020

MILLION GALLONS (MG)



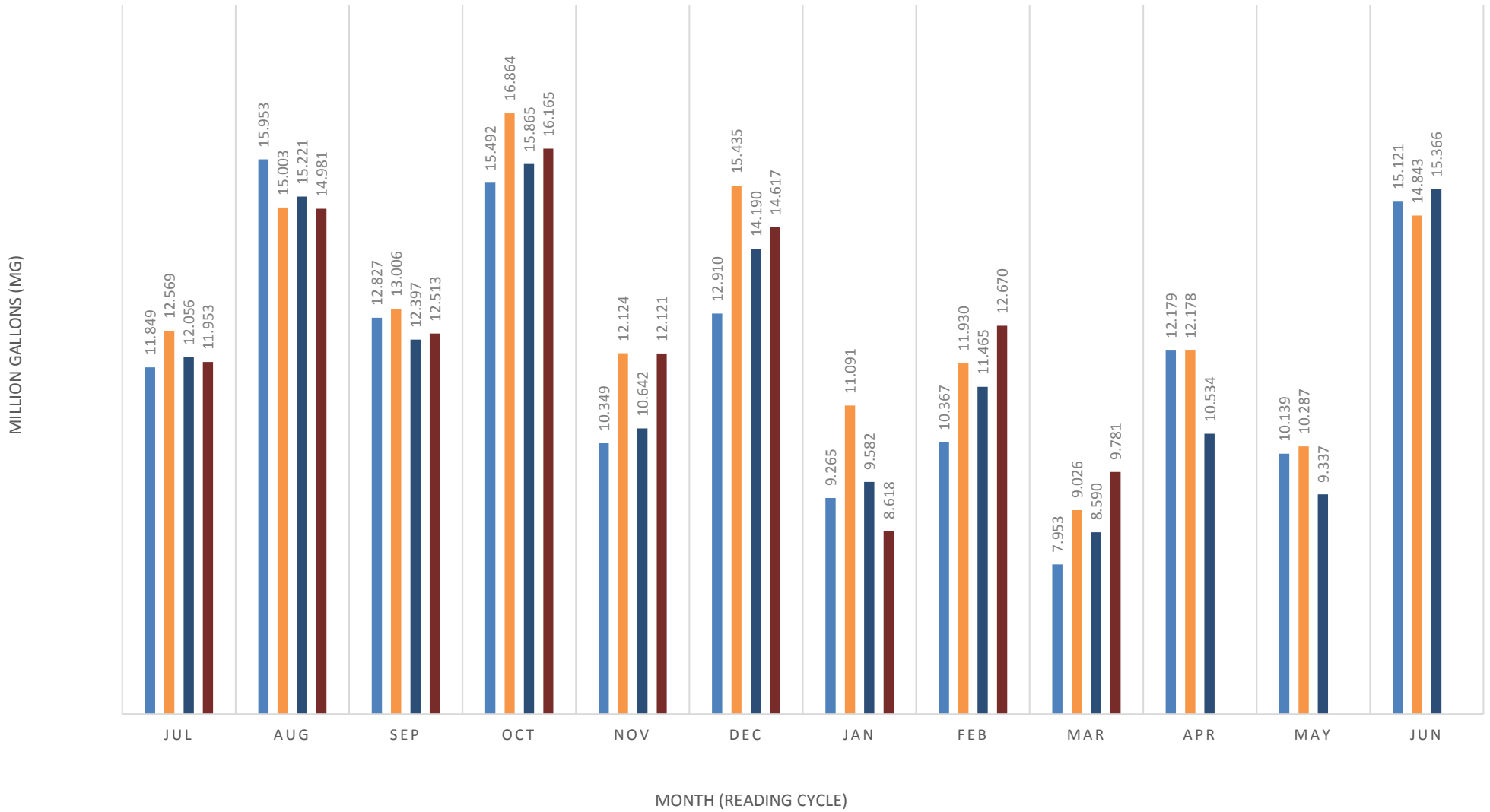
LOCSD Water Data

Water Consumption Data in Million Gallons						
% of Service Area	Billing Period		FY 16-17	FY 17-18	FY 18-19	FY 19-20
43	5/11 to 7/10	Jul	11.849	12.569	12.056	11.953
57	6/11 to 8/10	Aug	15.953	15.003	15.221	14.981
43	7/11 to 9/10	Sep	12.827	13.006	12.397	12.513
57	8/11 to 10/10	Oct	15.492	16.864	15.865	16.165
43	9/11 to 11/10	Nov	10.349	12.124	10.642	12.121
57	10/11 to 12/10	Dec	12.910	15.435	14.190	14.617
43	11/11 to 1/10	Jan	9.265	11.091	9.582	8.618
57	12/11 to 2/10	Feb	10.367	11.930	11.465	12.670
43	1/11 to 3/10	Mar	7.953	9.026	8.590	9.781
57	2/11 to 4/10	Apr	12.179	12.178	10.534	
43	3/11 to 5/10	May	10.139	10.287	9.337	
57	4/11 to 6/10	Jun	15.121	14.843	15.366	
TOTAL			144.405	154.356	145.245	113.418

Consumption is billed for a two month period every month.
 Revenue is based on gallons billed - not cash received.
 Production is recorded daily.

HISTORICAL TO PRESENT LOCS D WATER CONSUMPTION BASED ON BILLING

■ FY 16-17
 ■ FY 17-18
 ■ FY 18-19
 ■ FY 19-20



LOCS D Water Data

Water Revenue Data						
% of Service Area	Billing Period		FY 16-17	FY 17-18	FY 18-19	FY 19-20
43	5/11 to 7/10	Jul	\$139,017.75	\$168,526.79	\$200,234.85	\$216,577.84
57	6/11 to 8/10	Aug	\$197,721.40	\$221,879.21	\$261,142.75	\$272,102.61
43	7/11 to 9/10	Sep	\$163,852.81	\$207,172.18	\$221,325.52	\$224,312.76
57	8/11 to 10/10	Oct	\$198,170.30	\$267,370.81	\$282,789.11	\$286,960.25
43	9/11 to 11/10	Nov	\$138,130.97	\$197,358.26	\$199,290.08	\$217,727.51
57	10/11 to 12/10	Dec	\$171,281.05	\$249,409.17	\$260,495.65	\$265,928.52
43	11/11 to 1/10	Jan	\$128,300.48	\$182,543.66	\$195,335.09	\$172,429.51
57	12/11 to 2/10	Feb	\$149,015.80	\$206,709.09	\$224,826.24	\$241,461.74
43	1/11 to 3/10	Mar	\$116,824.26	\$159,040.50	\$172,472.09	\$187,483.31
57	2/11 to 4/10	Apr	\$165,317.00	\$208,966.41	\$214,147.00	
43	3/11 to 5/10	May	\$135,978.00	\$173,254.24	\$181,625.82	
57	4/11 to 6/10	Jun	\$193,625.41	\$241,491.17	\$277,435.92	
		TOTAL	\$1,897,235.23	\$2,483,721.49	\$2,691,120.12	\$2,084,984.05

Consumption is billed for a two month period every month.
 Revenue is based on gallons billed - not cash received.
 Production is recorded daily.

HISTORICAL TO PRESENT LOCSD WATER REVENUE BASED ON BILLING

